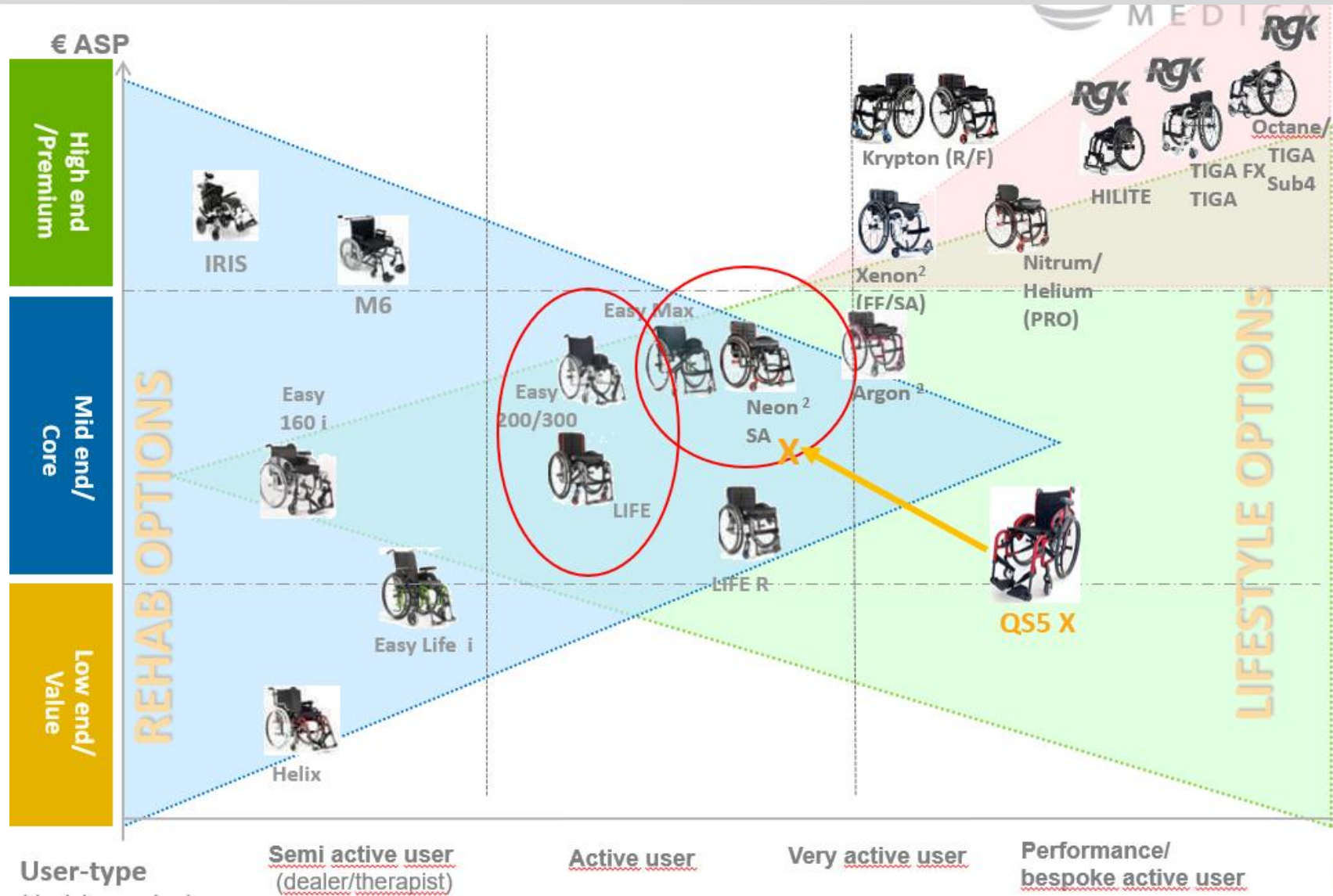


QS5 X



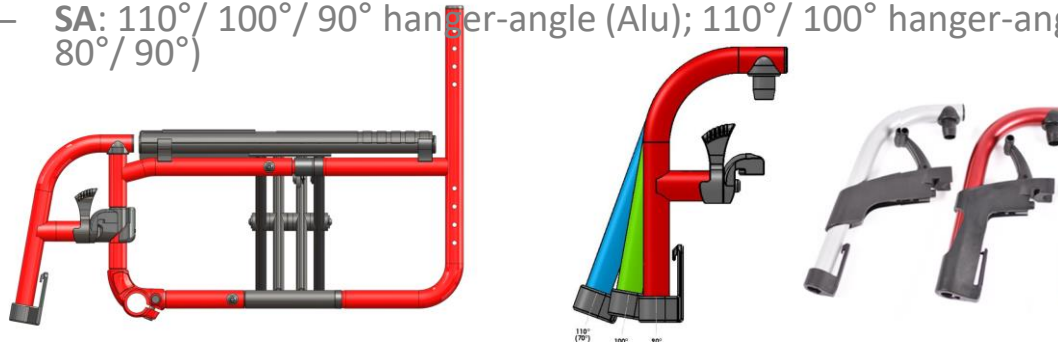
Positioning



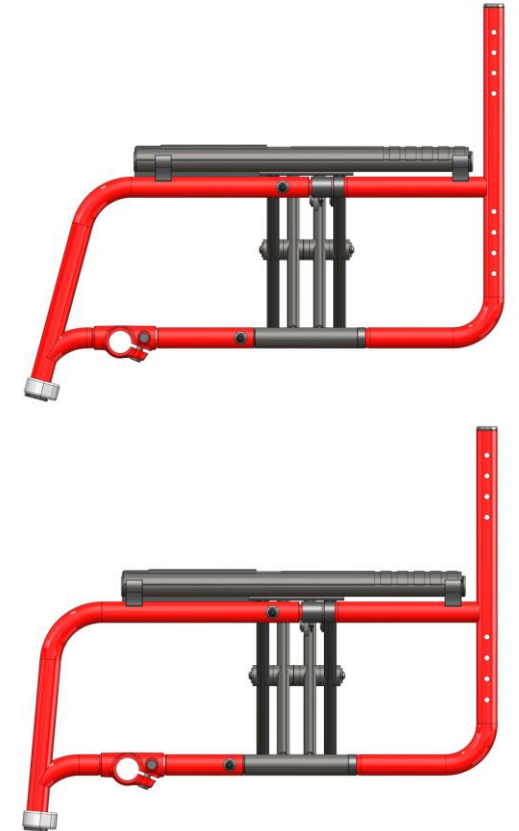
Product Characteristics

Front Frame

- **SA or FF frame-versions:**
 - **FF:** 105°/ 95°/ 95° with 20mm inset (UK: 75°/ 85°/ 85° with 20mm inset)
 - **SA:** 110°/ 100°/ 90° hanger-angle (Alu); 110°/ 100° hanger-angle (Composite) (UK: 70°/ 80°/ 90°)



- **Material:** 7000 series aluminium, heat-treated
- **Aesthetics:** smooth and clean design with fully integrated caster-house and almost no bolts & holes.
- **Lengths:** front-frame is cut per seat-depth (exception: SD 320/340/360mm share one frame-length)
- **Modularity:** QS5 X can be converted from SA to FF by exchanging the front-frame
- **Scratch-protection bushing** to avoid scratches from hanger operation
- **Hemi-option (QSC080101):** unique, lower caster-link to achieve very low front seat-heights (360-410mm)

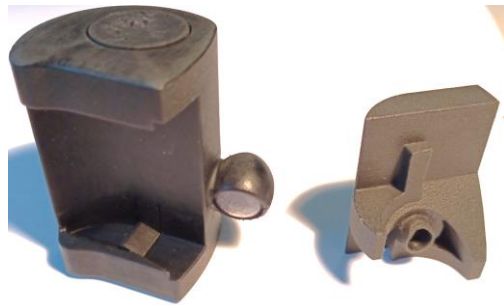


Product Characteristics

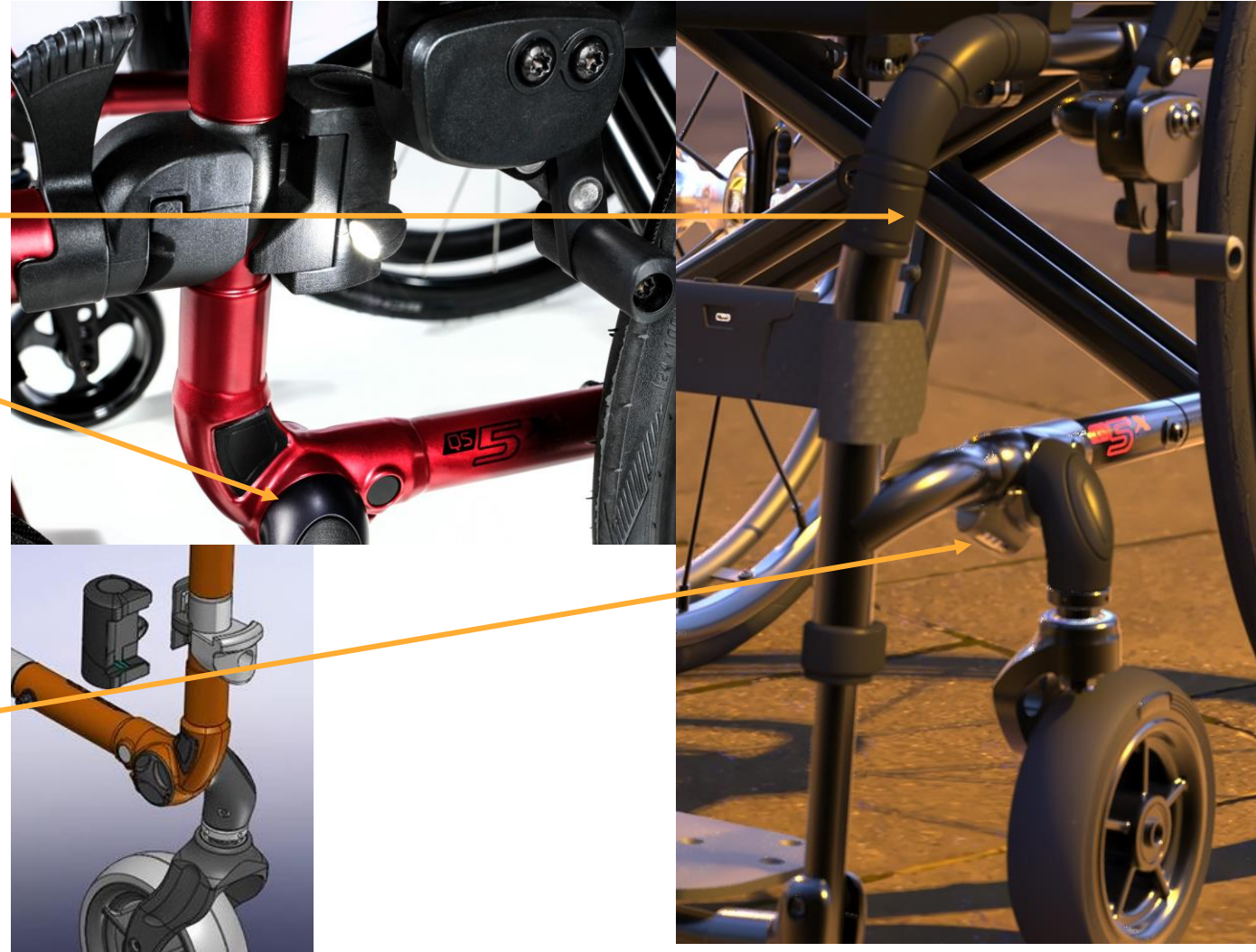


Front Frame: Innovations

- **Touch-points:** user-trials helped to identify the spots where a user would grab the chair for transport. Soft rubber patches improve handling and protect the frame from transport tie-down hooks (SA)
- **LED lights:**
 - SA: one LED light and battery per side, attached to the hanger boss (slide and lock)



- FF: one LED light per side, central battery-pack on the calf-strap (same as Nitrum)



Product Characteristics



Front Frame: Caster Links

- **Caster-house:** forged aluminium (with steel thread), welded into the front frame. Includes rubber “touch-points” on the SA
- **Caster-links:** forged aluminium. Nitrum-proven, hidden 3-way adjustment (height, tracking, angle) for optimized performance. Soft rubber-bumper offers scratch protection (i.e. when entering a car)
- **Easy adjustment** of caster-angle with only one bolt
- **Highest strength**, designed to withstand the stress of e-mobility add-on usage
- **Caster-forks:** new design of caster-forks. Lightweight, anti-flutter set screw included, less NoGos. The new design will be subsequently introduced to other Quickie products

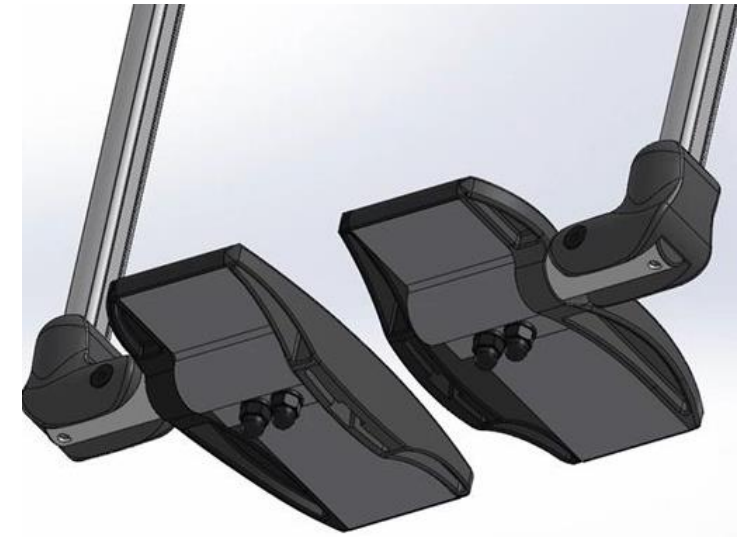


Product Characteristics



Front Frame: Aluminium Footrest (platform and divided)

- New developed footrest
- Less parts- lighter and easier to adjust/ assemble, no spacers required
- Available as Platform and Divided
- Easy angle- and width-adjustment
- Depth-adjustment by exchanging left/ right
- Re-designed “tongue-and-groove” for easier opening

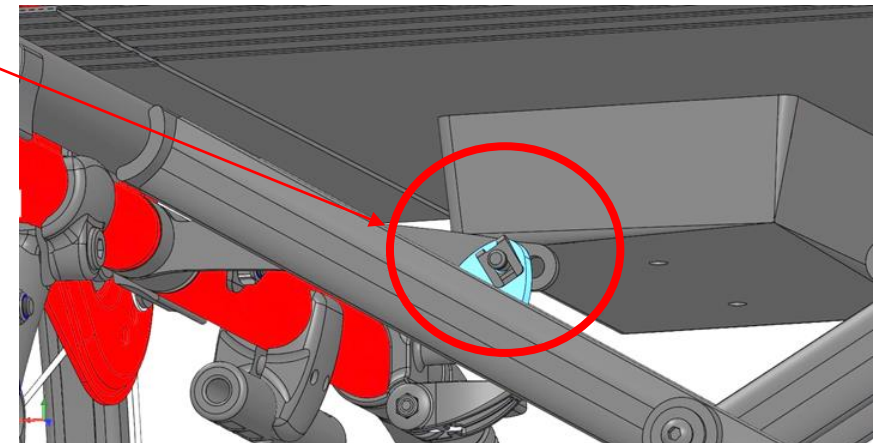


Product characteristics



Cross-brace

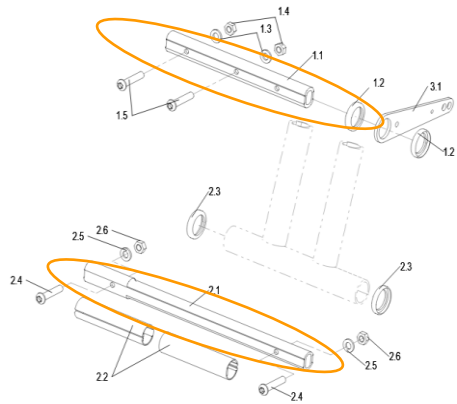
- 4-arm cross brace, 7000 aluminium, ovalized for increased stability and torsional stiffness... Yet lighter than i.e. the Neon's 2-arm x-brace
- Internal liners to reinforce FEM calculated, highly stressed areas without adding unnecessary weight
- **Improved tolerances** of the seat-saddles for effortless folding yet tight fit for a stiff frame
- **Offset-connection of x-brace latches** (connection with the frame) to improve the folding geometry and thus performance (wheels will remain neutral whilst folding, no "dead spots")
- **Benchmarking** proves the QS5 X's superior folding performance: smooth in- and out of the seat-saddles without dead-spots and unwanted "camber" whilst folding
- **Optional automatic locking** functions for improved transportability



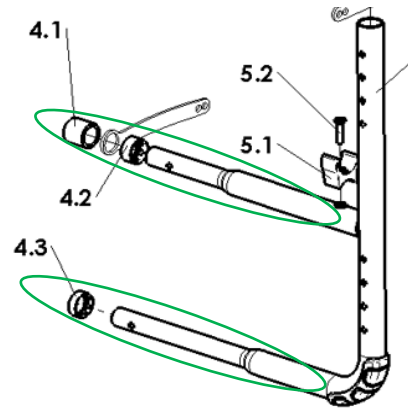
Product Characteristics

Rear Frame

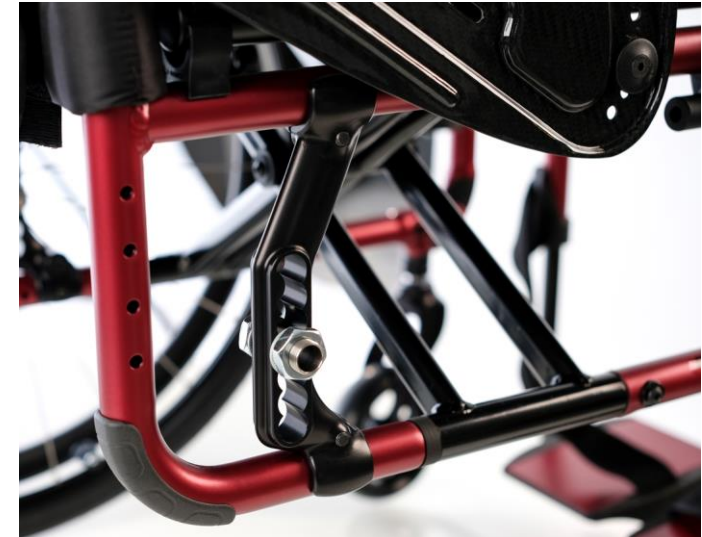
- **Material:** 7000 series aluminium, heat-treated
- **Aesthetics:** smooth design, no Life “duck-tail” (and this more compact), frame protection
- **Modularity:** only two variants: with/ without angle-adj. backrest
- **Innovation:** “Swaging” of the tube saves weight as no connecting-profile is used to connect front- and rear-frame=> Light & stiff solution, less play



Life: inner profiles to connect front- and rear-frame



QS5 X: tapered rear-frame tube slides directly into front-frame tube – no add. profile required.



Swaging (example image)

Product Characteristics

Axle-plate

- **New aesthetic design**, hidden holes and bolts
- Made of **forged aluminium**
- **Easy CoG adjustment** with 5 increments (poka yoke), axle-plate can be mounted upside-down and forwards/ rearwards facing to achieve all CoG/ seat-height combinations
- **Easy camber adjustment** with inlays for 0°/ 2°/ 4°
- **Wheel adapter** offers the possibility to adjust track-width (adjust the gap between wheel and sideguard)



Product Characteristics

Backrest Versions

- **90° backrest** as standard
 - Optional lumbar curve 5° front or rear

- **Backrest folding options:**
 - Half-folding to the front
 - Half-folding to the rear

- **Optional, angle adjustable backrest**
 - 85° to 105° in 5° increments. Position can be chosen on the OF

- **Push handles:**
 - **New option:** push-handles, long (+30mm in length)



| | | |
|-----------|---|--|
| QSC030010 | ● Backrest, fixed (90°) | |
| QSC030111 | □ Lumbar curve 5° (to the front) | 76,00 |
| QSC030110 | □ Lumbar curve 5° (to the rear) | 76,00 |
| QSC030101 | □ Backrest, half-folding (to the front) (4) | 305,00 <i>(from back height 375 mm)</i> |
| QSC030031 | □ Backrest, fold-down (to the front) (4) | 325,00 <i>(from back height 350 mm, see manual on collisions when folding the wheelchair)</i> |
| QSC030012 | □ Backrest, angle-adjustable ○ 80° ○ 85° ○ 90° ○ 100° ○ 105° | 256,00 <i>(not with BH 500 mm)</i> |

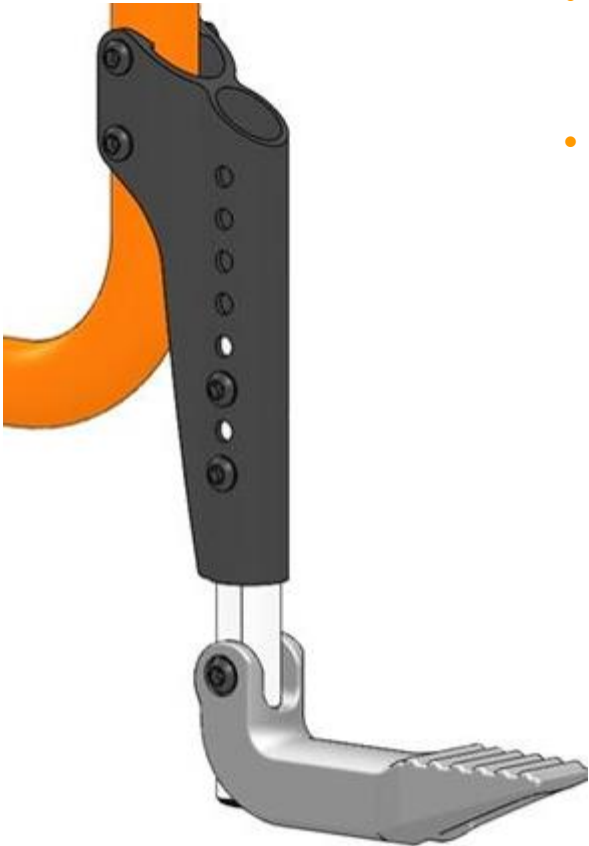
Seite 1

Product Characteristics



Knee-lever Wheel-lock and Tip-tube

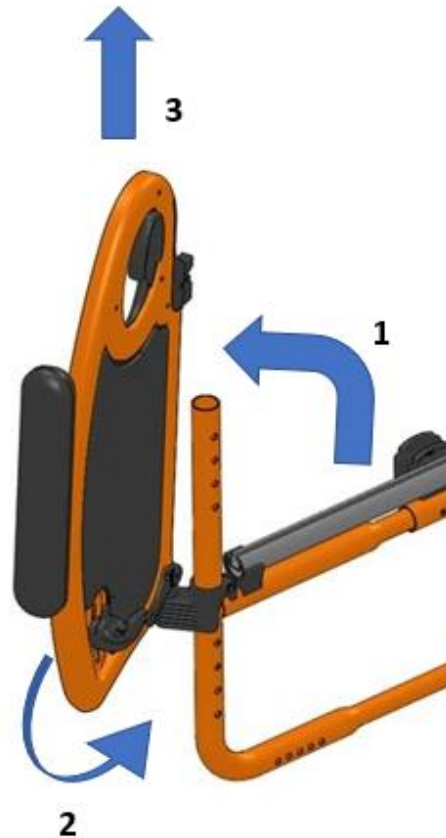
- **New knee-lever wheel-lock & attachment:** more modern design, reduced force yet safe locking. Ergonomic “flip-back” lever for safe transfers and to prevent opening by the hanger.
- New, ergonomic wheel-lock extension
- **Tip-tube:** new design with hinge as safety feature (tip-tube will flip up when it hits a curbstone/ step and prevent the user from falling out of the chair)



Product Characteristics

Desk-sideguard and Crash-test Option

- **Desk-sideguard:** new, modernized Design of the Panel. Improved locking: the rear hinge locks the sideguard in place and can only be released by rotating the sideguard slightly.
- **Crash-test:** crash-tested according to ISO 7176-19:2022. Crash-test option includes loops at the rear end.
- Crash-test incl. headrest!



Product Characteristics



Lightest Weight



- SW360x SD400mm
- 4" Alu solid casters
- 350mm backrest height
- 90° backrest
- Footrest composite divided, non angle-adj.
- Without push-handles
- Sideguards Carbon
- Compact wheel-locks
- 24" Proton wheels/ Schwalbe One/ Alu handrim