



# SEDEO SEATING

ONE SEATING SYSTEM.  
INFINITE POSSIBILITIES.

SEDEO  
SEATING & POSITIONING



# SEDE

A high-contrast, black and white photograph showing a close-up of a bicycle seat and its mounting hardware. The seat is dark and appears to be made of a textured material like leather or synthetic leather. The frame and various adjustment bolts and levers are visible, creating a complex geometric pattern of lines and shadows. The word "SEDE" is printed in large, white, sans-serif capital letters across the center of the image.





# TABLE OF CONTENTS

## SEDEO - ONE SOLUTION FOR ALL YOU NEED

Understanding the SEDEO seating portfolio & clinical performance factors

04

## SEDEO - KEY FEATURES

All technical data at a glance

07

## SEDEO LITE - THE SIMPLE, ADJUSTABLE ONE

The seating solution for users with mild to moderate postural needs

08

## SEDEO PRO - THE HIGHLY CONFIGURABLE ONE

The seating solution for users with moderate to complex postural needs

12

## SEDEO PRO ADVANCED - THE MOST INTELLIGENT ONE

The seating solution for users that need most advanced therapeutical functions

16

## SEDEO PRO ADVANCED UP - FOR STANDING

The seating solution for users that want to experience life from new heights

20

## SEDEO, JAY AND WHITMYER SEATING ACCESSORIES

Comfort, stability and high level skin protection without compromise

24

# SEDEO POWER SEATING

## ONE SOLUTION IS ALL YOU NEED

**GOOD SEATING STARTS WITH THE PERSONAL NEEDS OF THE CLIENT. FOR MILD TO MODERATE TO COMPLEX CLINICAL NEEDS, ALL SEDEO SEATING SYSTEMS COMBINE A HIGHLY ADJUSTABLE SEAT FRAME WITH A BROAD CHOICE OF POSTURAL SUPPORT TO ASSURE THE BEST SEATING AND POSITIONING.**

Optimal mobility is achieved by providing the best ergonomic solutions to each client. A wheelchair client's functional ability, independence and comfort are directly tied to choosing the best matched wheelchair features.

A well-adapted seating system allows for improved posture, achievement of physical support goals, and overcoming social and practical challenges. Truly modular in design, all our SEDEO power seating systems reflect this success and provide a new level of functionality, comfort and design. All SEDEO seating systems can be easily personalised and quickly adapted to the (changing) needs of the user. In addition, each SEDEO seating system can be combined with various QUICKIE power bases and thus expotentiate the variety of our power wheelchair range - true to the motto:

**SEDEO - One Seating Solution. Infinite Possibilities.**

### **MOST ADVANCED TECHNOLOGIES**

Advanced engineering and innovative technologies are applied to improve people's lives: Memory Seating, advanced anti-shear backrests, biometrical repositioning, remote seating app (pressure management), SWITCH-IT® controls and Link-It® mounting systems and advanced R-Net® Controls, Pressure Relief Alert and Record (PRAR).



### **EASIER TO SERVICE**

The modularity and flexibility of the SEDEO power seating systems and controls allow an easy adaptation to different users, making it perfect for refurbishments and allowing a great fleet management.



### **EASIER TO LEARN**

The common design and the modularity creates a simplified user experience, that makes it very easy to learn, manage and prescribe.





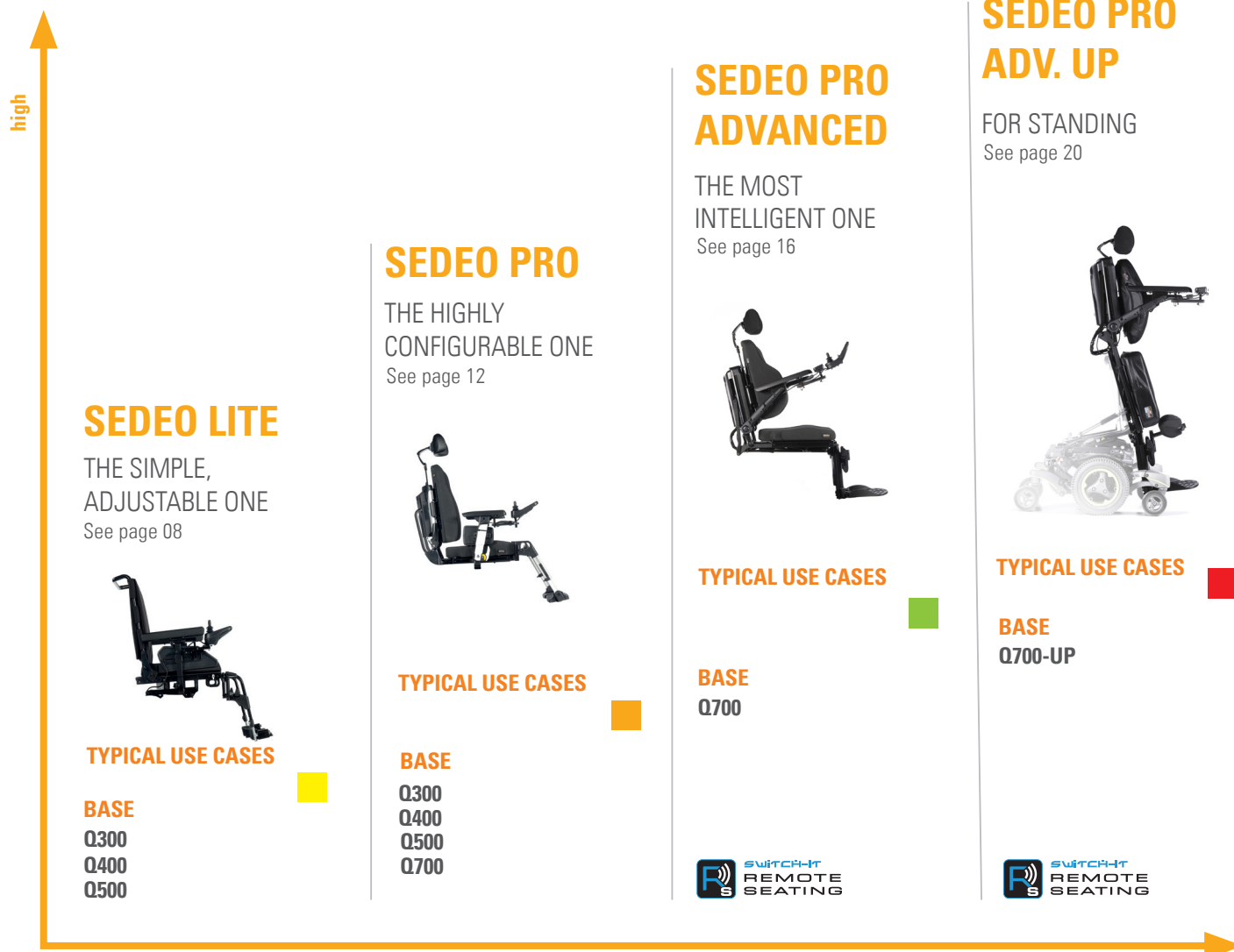
# SEDEO POWER SEATING

## INFINITE POSSIBILITIES

**EACH SEDEO SEAT IS DESIGNED TO ADDRESS A SPECIFIC SET OF CLINICAL NEEDS, AND EACH QUICKIE POWER BASE IS DESIGNED TO ADDRESS A SPECIFIC ENVIRONMENTAL NEED. TOGETHER THEY MULTIPLY TO ADDRESS A WIDE RANGE OF NEEDS.**

### TYPICAL USE CASES

- 🟡 Clients who use a powered wheelchair for most of their mobility, and require a range of popular seating functions to manage fatigue, stability and comfort. This may include clients with diagnoses such as arthritis, amputation or neurological conditions like cerebral palsy and multiple sclerosis.
- 🟡 Clients who need extra postural support from integrated modular seating and require extra powered seating functions to manage posture, pain and skin breakdown risk. This could include clients with paralysis, brain injury or progressive conditions like motor neurone disease.
- 🟢 Clients who need highly advanced, coordinated powered seating functions for a range of daily tasks with programmable memory functions. This could include clients with paraplegia, cerebral palsy, multiple sclerosis or motor neurone disease.
- 🔴 Clients who require a standing position from the wheelchair for reasons such as weight bearing, joint flexibility and daily tasks. These clients have long-term conditions that require powered seating functions, have sufficient range of motion and benefit from the addition of a standing feature.



This overview is meant to provide suggestions that you can discuss with your therapist, doctor or prescriber. Every individual's condition is different and therefore a professional personalized assessment is recommended.







# SEDEO POWER SEATING

## KEY FEATURES OVERVIEW

ALL TECHNICAL DATA AT A GLANCE.



User clinical need	Low to Medium	Medium to high	High	High / Standing
Postural needs	+	++	+++	+++
Pressure sensitivity	+	++	+++	+++
Configurable	++	++	+	+
Max user weight	136 kg	160 kg 250 kg Q700 M HD	160 kg	120 kg
Seat width	385 - 510 mm	380 - 560 mm 500 - 660 mm Q700 M HD	380 - 560 mm	380 - 560 mm
Seat depth	410 - 560 mm	400 - 560 mm 460 - 560 mm (Q700 M HD)	400 - 560 mm	400 - 540 mm
Back height	460 - 510 mm	530 - 720 mm	510 - 760 mm	510 - 760 mm
Special controls offering	yes	yes	yes	yes
Powered recline	85° - 120°	90° - 150° biomechanical	85° - 175° biomechanical	85° - 175° biomechanical
Anti shear recline	-	100 mm	180 mm	180 mm
Posterior tilt, powered	30° / 50°	30°/50°	50°	22°
Anterior tilt, powered	-	-	yes	yes
Power legrests	yes	yes	yes	yes
Lift	300 mm	300 mm No lift Q700 M HD	300 mm	200 mm
C-Me	yes	yes	yes	-
Programmable seating	-	-	yes	yes
Memory seating	-	-	yes	yes
Pressure relief reminders	-	-	yes	yes
Lie down position	-	-	yes	yes
Standing Function	-	-	-	yes

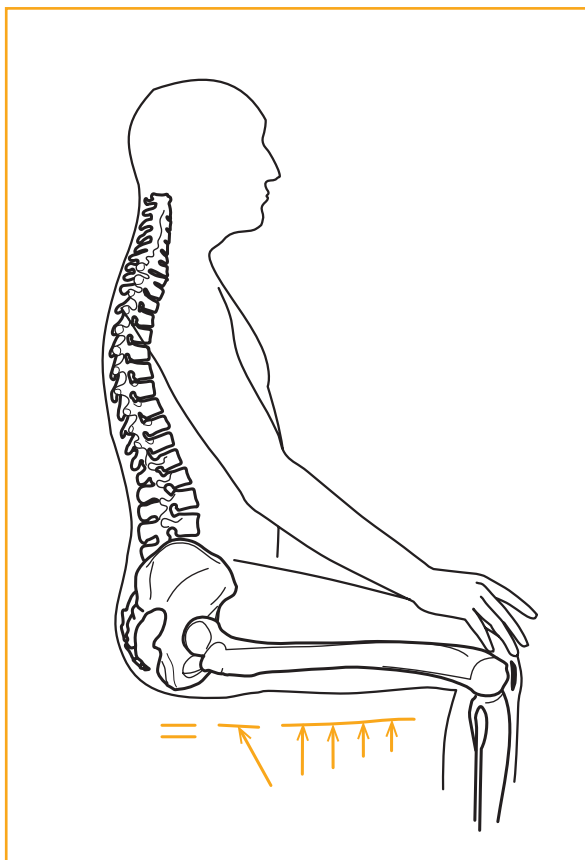


# GOOD POSTURE

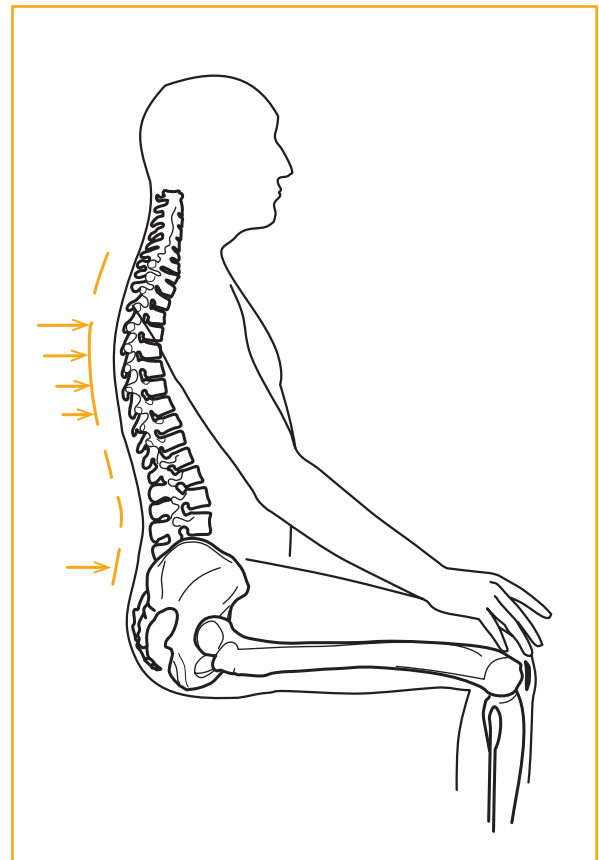
## CLINICAL PERFORMANCE FACTORS

**GOOD POSTURE IS STABLE AND SUPPORTIVE - REQUIRING MINIMAL EFFORT TO MAINTAIN, PUTS MINIMAL STRAIN ON LIGAMENTS AND JOINTS AND IS COMFORTABLE TO THE CLIENT.**

- Identify the goals for the client in the wheelchair
- Define the right seating posture (postural alignment) to meet the objective(s), combining balance (a state where the body is in dynamic equilibrium) and stability
- Provide the correct level of support in the correct position beginning with the pelvis, thighs and feet then extending up the thorax and spine towards the head
- Ensure optimal pressure distribution over the entire seat and back support surface and avoid shear forces



Ensure optimal load distribution of the entire seat



Ensure optimal load distribution of the back support

# STABILITY

## CLINICAL PERFORMANCE FACTORS

### THE SCIENCE AND CLINICAL APPLICATION OF MOBILITY SEATING CAN BE BROKEN DOWN INTO THE FOLLOWING FACTORS:

A cushion and backrest are functioning effectively when the client is stable for the required activities and pressure is effectively distributed.

#### Each user requires a different level of postural support

The pelvis is a three dimensional structure and can tilt and move in multiple directions. In the absence of adequate muscle control, support must be provided in each of these dimensions.

#### THE KEY IS TO STABILISE THE PELVIS. THERE IS STABILITY IN TWO DIRECTIONS:

##### Anterior/Posterior stability

Anterior/posterior pelvic stability can be enhanced through the contouring of the cushion. A supportive backrest is essential to provide posterior pelvic support to facilitate this alignment and prevent a rearward or posteriorly tilted pelvis.

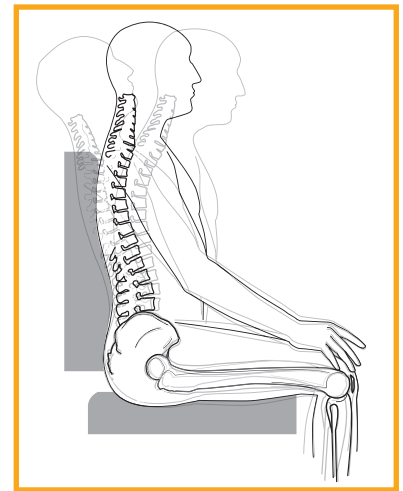
##### Lateral stability

Anterior/posterior stability alone is not enough, we also need lateral stability. Not only does this improve client activity and posture, but it also reduces the pressure on the Ishial tuberosities which are a high pressure injury risk.

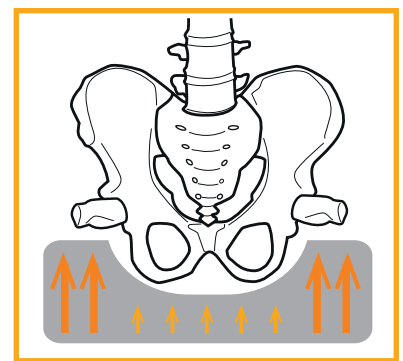
##### Pressure redirection

Effective seating redirects or offloads pressure and reduces peak pressures in critical zones, thereby reducing the risk of skin breakdown. Skin integrity is optimised through contouring of the seated surfaces to

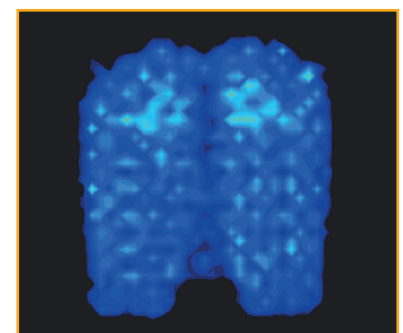
- Spread the mass of the client over as wide a surface area as possible
- Redistribute pressure away from bony prominences to safer areas that can take higher forces



Stabilise the pelvis



Load trochanters for stability



Redirect pressure



# SEDEO LITE SEATING SYSTEM

FOR CLIENTS  
WITH MILD TO  
MODERATE  
POSTURAL  
NEEDS

## CLIENTS NEEDS

Postural needs	● ○ ○
Pressure sensitivity	● ○ ○
Configurable	● ● ○
Max. user weight	136 kg

## COMPATIBLE WITH QUICKIE BASES



Q300



Q400



Q500

**MAINTAIN ALIGNMENT AND PROMOTE HEALTHY POSTURE WITH SEDEO LITE, THE MODULAR SEATING SYSTEM DESIGNED FOR CLIENTS WHO ARE IN A STABLE MEDICAL CONDITION, AND WOULD BENEFIT FROM POWER OPTIONS.**

**The SEDEO LITE offers key features:**  
specialised supports, built-in-growth,  
C-Me, power foot support, power tilt & the  
integrated seat rail.

**Compatible with JAY and WHITMYER to offer  
advanced positioning capabilities.**

**JAY** **WHITMYER**



# SEDEO LITE

Truly modular in design, this seating system provides a new level of functionality to promote healthy postures while supporting specific postural issues such as scoliosis, windswept legs, and other mild conditions. In younger clients, SEDEO LITE ensures the body maintains alignment during periods of growth.

Super user friendly, SEDEO LITE can be adjusted with just one tool, perfect for quick and easy adjustments. The integrated seat rail is able to mount additional positioning elements for further postural needs.



## FOR THE HEALTHCARE OR WHEELCHAIR PROFESSIONAL: KNOWING ONE IS KNOWING THEM ALL.

### BROAD RANGE OF SPECIALISED SUPPORTS

Including head supports, anterior chest supports, lateral thoracics, lateral thigh supports, knee supports and a medial knee support to provide a functional and comfortable position.

### POWER TILT

To promote healthy skin, avoid pressure injuries and allow for rest. This enables clients to stay in their wheelchair for longer with more comfort, and assists with improved trunk and head control.

### POWER ELEVATING LEGREST

When combined with tilt and recline, elevation of the legs is a key component in reducing edema, and extending tight muscles. Elevating legrests are also helpful with basic ground clearance.

### INTEGRATED SEAT RAIL

This offers many options for mounting different positioning elements for additional configurations.

### LIGHTWEIGHT AND FOLDABLE

The ability to fold down the back allows this seating system to be convenient for transportation. Ideal for who need a minimal seat frame.

**For a complete options, and accessories overview please check the order form.**





# SEDEO LITE

## QUICK AND EASY TO ADJUST

### CREATING THE RIGHT SEATING POSTURE FOR CLIENTS – EASY FOR THE HEALTHCARE PROFESSIONAL

- Very flexible and highly adjustable
- Intuitive adjustments: One tool adjustment (5 mm Allen key) / self-explanatory measuring scales
- Parts can be adjusted without steps, repositioned, widened, turned to create the best support
- Adjustments can be done with the user in the chair, easily reachable from the side



# SEDEO LITE

## SEATING FRAME

THE WIDE RANGE OF SEAT WIDTH AND SEAT DEPTH ADJUSTMENTS ENSURE THAT THE SEDEO LITE IS IDEAL FOR REFURBISHMENT.

**Seat width** adjustable with seat plates 385 - 510 mm



**Seat depth** continuously adjustable 410 – 560 mm



**Posterior powered tilt**  
0° to 30° // - to 25° // 0° to 50°



**Seat lift**  
300 mm



# SEDEO PRO SEATING SYSTEM

FOR CLIENTS  
WITH MODERATE  
TO COMPLEX  
CLINICAL NEEDS

## CLIENT'S NEEDS

Postural needs	● ● ○
Pressure sensitivity	● ● ○
Configurable	● ● ●
Max. user weight	160 kg / 205 kg Q700 M HD

## COMPATIBLE WITH QUICKIE BASES



Q300



Q400



Q500



Q700

**MEET YOUR SOCIAL, FUNCTIONAL AND HEALTH RELATED GOALS WITH SEDEO PRO, THE HIGHLY ADJUSTABLE SEATING SYSTEM DESIGNED FOR CLIENTS WHO HAVE DEGENERATIVE DISEASES OR NEED TO SAFEGUARD AGAINST OCCURANCE OF SKELETAL DEFORMITIES WITH MODERATE TO COMPLEX NEEDS.**

**The SEDEO PRO offers all the key features of the SEDEO LITE:**

Specialised supports, built-in-growth, C-Me, power leg support, power tilt & the integrated seat rail.

**In addition, SEDEO PRO offers:**

Enhanced power recline, anti-shear backrest and power foot support.

**Compatible with JAY™ and WHITMYER™ to offer advanced positioning capabilities.**

**JAY**  
Superior Clinical Seating.

**WHITMYER**



# SEDEO PRO

A truly versatile seating system, SEDEO PRO combines a highly adjustable seat frame with an excellent choice of postural support options, to cover a wide range of different user needs.

SEDEO PRO can be easily personalised to suit individual requirements, and quickly adapted to the changing needs of the user. Super user-friendly, SEDEO PRO can be adjusted with just one tool, perfect for quick and easy adjustments. The integrated seat rail is able to mount additional positioning elements for further postural needs.

**FOR THE WHEELCHAIR  
PROFESSIONAL: KNOWING ONE IS  
KNOWING THEM ALL.**

## **BROADEST RANGE OF OPTIONS**

Widest range of options including head supports, anterior chest supports, lateral thoracics, lateral thigh supports, knee supports and a medial knee support to provide a functional and comfortable position.

A wide range of JAY cushions and backs were optimized to fit the SEDEO PRO for advanced positioning capabilities. All the style, comfort and adjustability clients know and love with WHITMYER has been carried over to the SEDEO PRO with a new design that integrates the head support post seamlessly into the SEDEO PRO back.

## **MORE POWER RECLINE 90°/130°**

This aids in breathing, and prevents pressure injuries and digestive complications. This helps to maintain a good-seated posture when in reclining position and returning from recline.

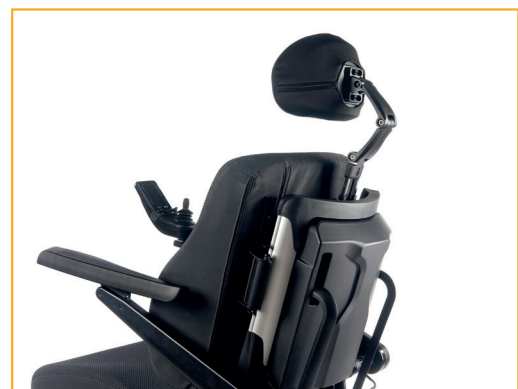
## **ANTI-SHEAR BACKREST (90° - 150°)**

To help prevent tissue damage due to shearing whilst helping to maintain a neutral pelvic position.

## **LOWER SEAT TO FLOOR HEIGHT**

This is to easily access desks and tables, and to facilitate transfers.

**For a complete options, and accessories overview please check the order form.**





# SEDEO PRO

## QUICK AND EASY TO ADJUST

### CREATING THE RIGHT SEATING POSTURE FOR CLIENTS – EASY FOR THE HEALTHCARE PROFESSIONAL

- Very flexible and fully adjustable
- Intuitive adjustments. One tool adjustment (5 mm Allen key) / one simple working routine / self-explaining measuring scales / no extra parts are required
- Parts can be infinitely adjusted, repositioned, widened, turned to create the best support
- Drop out protections makes this easy for every one
- Adjustments can be done with the user in the chair, easily reachable from the side



**1 = Seat width: 380 - 560 mm**  
(500 - 660 mm Q700 M HD)

**2 = Additional armrest width:**  
+ 20 mm to - 20 mm each side

**3 = Seat depth: 400 - 560 mm**  
(460 - 560 mm Q700 M HD)

**4 = Back height: 530 - 720 mm**

# SEDEO PRO

## SEATING FRAME

THE WIDE RANGE OF SEAT WIDTH AND SEAT DEPTH ADJUSTMENT MAKES THE SEDEO PRO IDEAL FOR REFURBISHMENT. ALWAYS THE RIGHT FIT, THE SEDEO PRO CAN'T BE ORDERED INCORRECTLY.

**Seat width** infinitely adjustable with seat plates  
380 – 560 mm, additional armrest width + 20 mm to - 20 mm  
on each side



**Seat depth** continuously adjustable 400 - 560 mm,  
two different plates for seat depth available  
(400 - 520 and 460 - 560 mm)



**Posterior powered tilt**  
0° to 30° // -5° to 25° // 0° to 50° // -5° to 45°



**Seat lift**  
300 mm // no lift Q700 M HD



# SEDEO PRO ADVANCED SEATING SYSTEM

FOR CLIENTS  
THAT NEED MOST  
ADVANCED  
THERAPEUTICAL  
FUNCTIONS

## CLIENTS NEEDS

Postural needs	● ● ●
Pressure sensitivity	● ● ●
Configurable	● ○ ○
Max. user weight	120 kg

## COMPATIBLE WITH QUICKIE BASE



Q700

**GAIN MORE INDEPENDENCE WITH SEDEO PRO ADVANCED, A HIGHLY ADAPTABLE, ADJUSTABLE AND BIOMECHANICAL SEATING SYSTEM THAT WILL HELP CLIENTS IN A LESS STABLE HEALTH CONDITION WITH COMPLEX NEEDS TO REACH THEIR HEALTH RELATED GOALS.**

**The SEDEO PRO ADVANCED offers all the key features of the SEDEO PRO, such as specialised supports, C-Me, anti-shear backrest, and power foot support.**

**In addition, SEDEO PRO ADVANCED offers Biometric Repositioning, memory seating, anterior tilt, the remote seating app, and a pressure relief alert and record (PRAR).**

**Compatible with JAY and WHITMYER to offer advanced positioning capabilities.**

**JAY** **WHITMYER**



# SEDEO PRO ADVANCED

For clients with high clinical needs that have a risk of pressure injury, the SEDEO PRO ADVANCED will meet their requirements with a highly adjustable seat frame and many options. SEDEO PRO ADVANCED is a biomechanical seating system that mirrors user's body's natural position for an ideal seated position at all times, even during transitions. It offers a comprehensive choice of postural support options, to cover a broad range of different user needs.

SEDEO PRO ADVANCED can be easily personalised to suit individual requirements, and quickly adapted to the changing needs of the user. Super user-friendly, perfect for quick and easy adjustments. The integrated seat rail is able to mount additional positioning elements for further postural needs.

## FOR THE WHEELCHAIR PROFESSIONAL: KNOWING ONE IS KNOWING THEM ALL.

### HIGHLY CONFIGURABLE

Wide range of options Including head supports, anterior chest supports, lateral thoracics, lateral thigh supports, knee supports and a medial knee support to provide a functional and comfortable position.

### 30° ANTERIOR TILT

The Anterior Tilt function facilitates access to higher levels such as shelves, improves the upper body extremity functionality, and allows to change the position for pressure distribution and to support with transfer.

### PATENTED ANTI-SHEAR BACKREST (85° - 175°)

Transitioning in and out of recline doesn't need to be uncomfortable. The power recline is supported by 7" / 180 mm of anti-shear to better maintain the positioning of the headrest, and even chin control, during recline.

### BIOMETRIC REPOSITIONING SEATING SYSTEM

This technology perfectly mirrors user's body's natural movement, providing independent seated repositioning throughout the day. With SEDEO PRO ADVANCED, users are always sitting comfortably.

### MEMORY SEATING OPTION

Get the most out of the powered seating options with Memory Seating, allowing up to six programmable positions to be saved and transition to them with a simple press of a button.

### PRESSURE RELIEF REMINDERS

The Remote Seating app plays an important role in pressure management. The app tracks key seating positions such as tilt, recline and leg elevation, as well as the duration of these positions. Clients can self-monitor their progress or securely share the data with their choice of caregivers.

**For a complete options, and accessories overview please check the order form.**





# SEDEO PRO ADVANCED

## QUICK AND EASY TO ADJUST

### CREATING THE RIGHT SEATING POSTURE FOR YOU – EASY TO DO FOR THE HEALTHCARE OR WHEELCHAIR PROFESSIONAL

- Very flexible and fully adjustable
- Intuitive adjustments. Simple working routine / self-explaining measuring scales / no extra parts are required
- Parts can be infinitely adjusted, repositioned, widened, turned to create the best support
- Drop out protections makes this easy for every one
- Adjustments can be done with the client in the chair, easily reachable from the side



# SEDEO PRO ADVANCED

## SEATING FRAME

LIKE THE SEDEO PRO, THE WIDE RANGE OF SEAT WIDTH AND SEAT DEPTH ADJUSTMENT MAKES THAT SEDEO PRO ADVANCED IDEAL FOR REFURBISHMENT. THE SEDEO PRO ADVANCED USES THE SAME SEAT PLATE THAN THE SEDEO PRO FOR GREATER COMPATIBILITY WITH EXISTING PARTS. ALWAYS THE RIGHT FIT, YOU CAN'T ORDER INCORRECTLY..

**Seat width** Seat width continuously adjustable with seat plates 380 – 560 mm

**Seat depth** continuously adjustable 400 – 560 mm, two different plates for seat depth available (400 - 560 and 460 -560 mm)

**Anterior Tilt** 30°



**Posterior powered tilt**  
0° to 50°



**Seat lift**  
300 mm

# SEDEO PRO ADVANCED UP SEATING SYSTEM

FOR  
CLIENTS THAT  
NEED MOST  
ADVANCED  
THERAPEUTICAL  
FUNCTIONS  
INCLUDING  
STANDING

## CLIENTS NEEDS

Postural needs	● ● ●
Pressure sensitivity	● ● ●
Configurable	● ○ ○
Max. user weight	120 kg

**QUICKIE COMBINED ALL THE BENEFITS OF THE SEDEO PRO ADVANCED SEATING SYSTEM WITH THE POWER TO STAND. THERE ARE MANY HEALTH AND LIFESTYLE BENEFITS TO STANDING INCLUDING ADDITIONAL PRESSURE RELIEF AND ENHANCED ACCESS TO YOUR ENVIRONMENT.**

**The SEDEO PRO ADVANCED UP offers all the key features of the SEDEO PRO ADVANCED, such as specialised supports, memory seating, power tilt/recline and power leg rest.**

**In addition, SEDEO PRO ADVANCED UP offers the option to stand.**

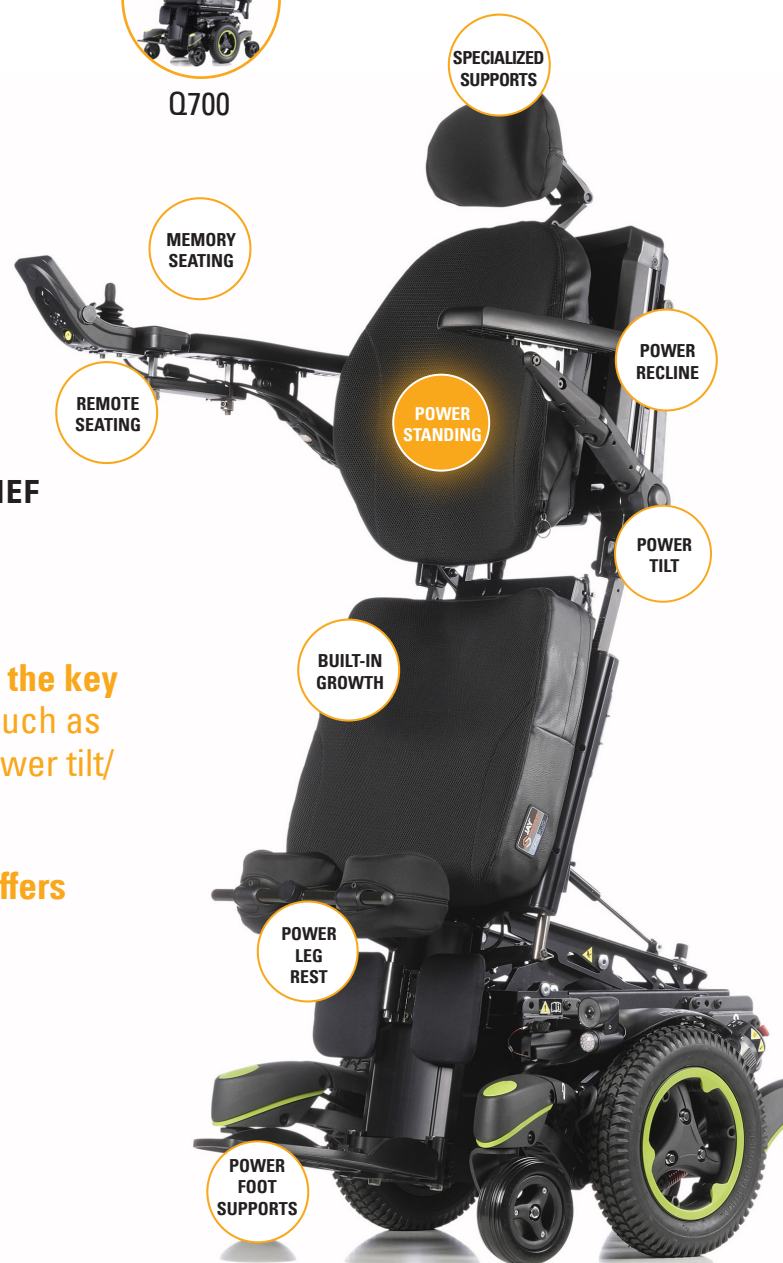
**Compatible with JAY and WHITMYER to offer advanced positioning capabilities.**

## COMPATIBLE WITH QUICKIE BASE



Q700





# SEDEO PRO ADVANCED UP

With a standing angle of up to 85°, the SEDEO PRO ADVANCED UP, the biomechanical standing seating system, allows to stand whenever clients want and offers many health and lifestyle benefits - stand at up to 85° allowing users to interact with their friends face-to-face and access environments from new heights.

SEDEO PRO ADVANCED UP can be easily personalised to suit individual requirements, and quickly adapted to the changing needs of the user. Super user-friendly, SEDEO PRO ADVANCED can be adjusted intuitively adjusted for quick and easy adjustments. The integrated seat rail is able to mount additional positioning elements for further postural needs.

## FOR THE WHEELCHAIR PROFESSIONAL: KNOWING ONE IS KNOWING THEM ALL.

### BENEFITS OF STANDING

- Improved pressure relief for those who may have limited ability to independently weight shift or have to sit for long periods
- Enhanced function and ability to reach and access and access the client's environment
- Improved range of motion and a reduction of the risk of contractures
- Supporting vital organ capacity, including pulmonary, bowel and bladder function and improves circulation
- Promoting bone health and reducing the occurrence of skeletal deformities by prolonged standing
- Reducing abnormal muscle tone and spasticity



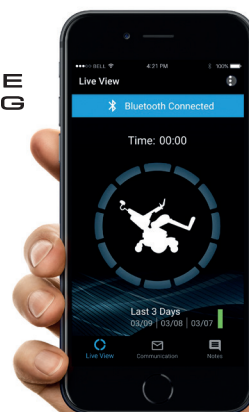
### 90° KNEE ANGLE

The centre mount footrest gives a true 90° knee angle in seated position. The ergonomic knee pad is also depth adjustable.

### PRESSURE RELIEF REMINDERS

The Remote Seating app plays an important role in pressure management. The app tracks key seating positions such as tilt, recline and leg elevation, as well as the duration of these positions. Clients can self-monitor their progress or securely share the data with their choice of caregivers.

**For a complete options, and accessories overview please check the order form.**





# TRUE INTEGRATION OF

SEDEO, JAY AND WHITMYER SEATING  
ACCESSORIES FOR THE VERY FIRST TIME.  
COMFORT, STABILITY AND HIGH LEVEL SKIN  
PROTECTION WITHOUT COMPROMISE.

**SEDEO**



Page 26



**JAY**

Page 50



**WHITMYER**

Page 52







# SEDEO LITE

## BACK CUSHION RANGE

	POSTURAL SUPPORT REQUIREMENTS			
	SEATING OBJECTIVE	Enhance freedom of movement	Help prevent slouching	Enhance lateral stability
PROFILED		● ● ●	●	●
PROFILED ADJUSTABLE		● ●	● ●	● ●
DEEP CONTOUR PASSIVE ADJUSTABLE		●	● ●	● ● ●
DEEP CONTOUR ACTIVE ADJUSTABLE		● ●	● ●	● ● ●



# SEDEO LITE

## BACK CUSHIONS

### PROFILED



#### Product Features:

- Curved base, with some lateral support and comfort foam layer
- Can be used with separate lateral supports
- Comfort cover

#### Clinical Application:

- For clients with a stable posture
- For clients who look for freedom of movement

#### SIZES AVAILABLE

HEIGHT	WIDTH					
mm	385	410	435	460	485	510
500						
570						

### PROFILED, ADJUSTABLE STRAPS



#### Product Features:

- Curved base with some lateral support and adjustable straps, to follow the contour of the spine
- Individually adjustable
- Can be used with separate lateral supports
- Comfort cover

#### Clinical Application:

- For clients with a stable posture
- For clients who need some adjustable support on the curve of their spine or to support the pelvic

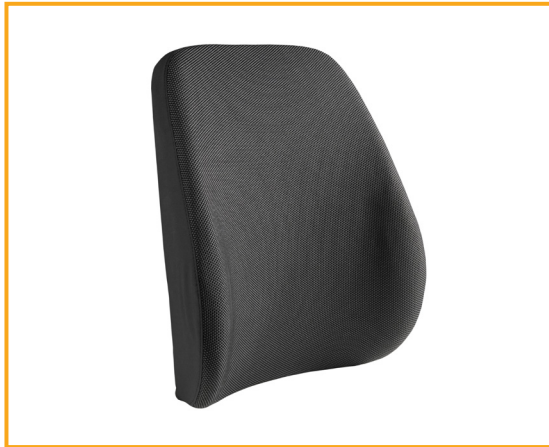
#### SIZES AVAILABLE

HEIGHT	WIDTH					
mm	385	410	435	460	485	510
500						
570						

# SEDEO LITE

## BACK CUSHIONS

### DEEP CONTOUR PASSIVE, ADJUSTABLE STRAPS



#### SIZES AVAILABLE

HEIGHT	WIDTH					
mm	385	410	435	460	485	510
500						
570						

#### Product Features:

- Curved base with adjustable straps, with possibilities to follow and support the curve of the client's back
- Allows stabilisation of the pelvis
- Deep lateral support over the complete height of the backrest cushion
- Individually adjustable
- Comfort cover

#### Clinical Application:

- The individually adjustable straps support an upright posture and provide a stable and ergonomic seating position
- For passive clients who need deep lateral support over the complete height of the backrest cushion
- Individually adjustable straps to optimise postural stability and provide correction / accommodation of mild postural deformity

### DEEP CONTOUR ACTIVE, ADJUSTABLE STRAPS



#### SIZES AVAILABLE

HEIGHT	WIDTH					
mm	385	410	435	460	485	510
500						
570						

#### Product Features:

- Curved base with adjustable straps, with possibilities to follow and support the curve of the client's back
- Allows for stabilisation of the pelvis
- Deep lateral support with free space in the shoulder region
- Individually adjustable
- Comfort cover

#### Clinical Application:

- The individually adjustable straps support an upright posture and provide a stable and ergonomic seating position
- For active clients who need deep lateral support with free space in the shoulder region
- Individually adjustable straps to optimise postural stability and provide correction / accommodation of mild postural deformity



# SEDEO PRO

## BACK CUSHION RANGE

	POSTURAL SUPPORT REQUIREMENTS			
	SEATING OBJECTIVE	Enhance freedom of movement	Help prevent slouching	Enhance lateral stability
PROFILED		● ● ●	●	●
PROFILED ADJUSTABLE		● ●	● ●	● ●
DEEP CONTOUR		●	●	● ●
FLEXIBLE PASSIVE		●	● ● ●	● ● ●
FLEXIBLE ACTIVE		● ●	● ● ●	● ● ●
FLEXIBLE ACTIVE XD		●	● ● ●	● ● ●

SEDEO PRO **PROFILED**

PAGE 30

SEDEO PRO **PROFILED WITH ADJUSTABLE STRAPS**

PAGE 31

SEDEO PRO **DEEP CONTOUR PASSIVE**

PAGE 32

SEDEO PRO **FLEXIBLE, DEEP CONTOUR WITH ADJUSTABLE STRAPS**

PAGE 33

SEDEO PRO **FLEXIBLE, DEEP CONTOUR ACTIVE WITH ADJUSTABLE STRAPS**

PAGE 34

SEDEO PRO **FLEXIBLE, EXTRA DEEP CONTOUR ACTIVE WITH ADJUSTABLE STRAPS**

PAGE 35

# PROFILED BACK CUSHION

## CURVED BASE CUSHION



### Product Features:

- Curved base, with some lateral support and comfort foam layer.
- Can be used with separate lateral supports
- Incontinence and comfort cover

### Clinical Application:

- For clients with a stable posture
- For clients who look for freedom of movement



### SIZES AVAILABLE

HEIGHT	WIDTH										
mm	380	400	420	440	460	480	500	520	540	560	660 Q700 M HD
440											
500											
560											

# PROFILED WITH ADJUSTABLE STRAPS

**CURVED BASE WITH ADJUSTABLE STRAPS TO FOLLOW THE  
CONTOUR OF THE SPINE**



## **Product Features:**

- Curved base with some lateral support and adjustable straps, to follow the contour of the spine
- Individually adjustable
- Can be used with separate lateral supports
- Incontinence and comfort cover

## **Clinical Application:**

- For clients with a stable posture
- For clients who need some adjustable support on the curve of their spine or to support the pelvic



## **SIZES AVAILABLE**

HEIGHT	WIDTH									
mm	380	400	420	440	460	480	500	520	540	560 660 Q700 M HD
440										
500										
560										



# DEEP CONTOUR

## PASSIVE



### CURVED BASE CUSHION

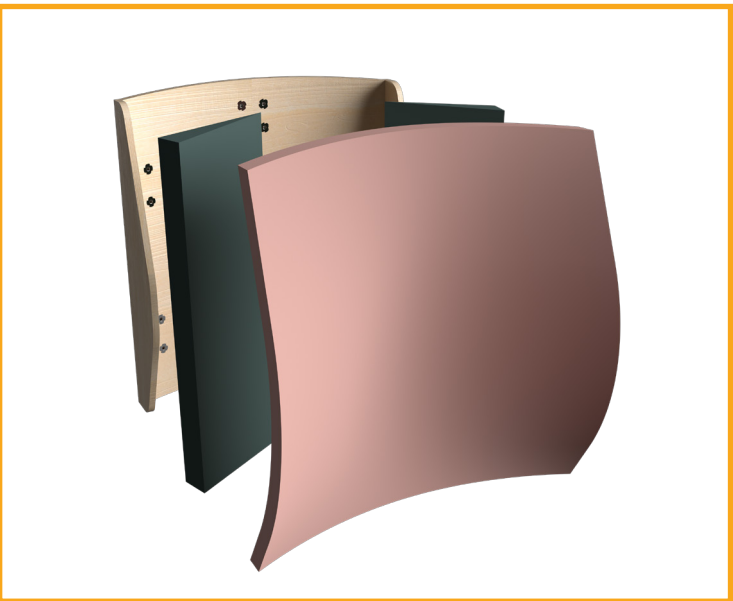


**Product Features:**

- Deep lateral support over the complete height of the backrest cushion
- Comfort foam layer
- Integrated lateral supports instead of separate thoracic supports
- Incontinence and comfort cover

**Clinical Application:**

- For passive clients who need deep lateral support over the complete height of the backrest cushion



### SIZES AVAILABLE

HEIGHT	WIDTH										
mm	380	400	420	440	460	480	500	520	540	560	660 Q700 M HD
440											
500											
560											

# FLEXIBLE, DEEP CONTOUR

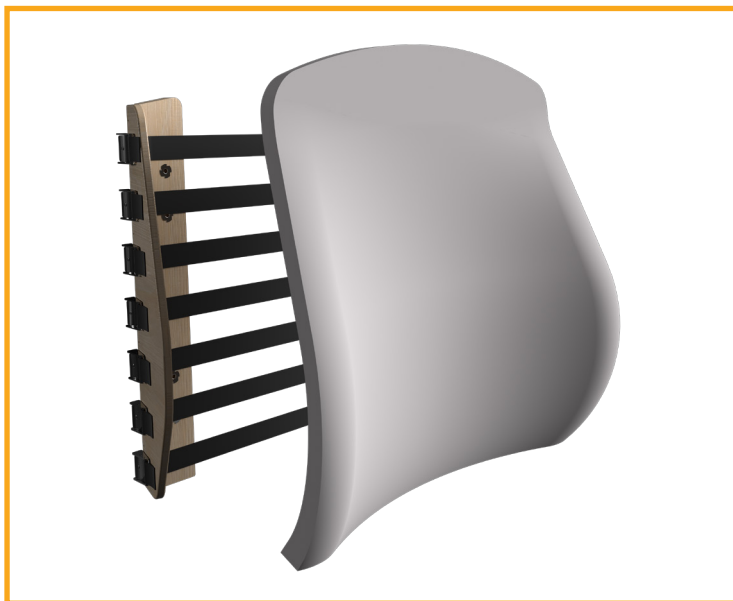
## PASSIVE WITH ADJUSTABLE STRAPS

**FLEXIBLE BASE WITH ADJUSTABLE STRAPS, WITH EXTENSIVE POSSIBILITIES TO FOLLOW AND SUPPORT THE CURVE OF THE CLIENT'S BACK**



### Product Features:

- Flexible base with adjustable straps, with extensive possibilities to follow and support the curve of the client's back
- Allows for stabilisation of the pelvis
- Adjustment possibility of the lateral support angle (more inward or more outward)
- Deep lateral support over the complete height of the backrest cushion
- Individually adjustable
- Integrated flexible lateral supports instead of separate thoracic supports
- Incontinence and comfort cover



### Clinical Application:

- The individual adjustable straps support an upright posture and provides a stable and ergonomic seating position
- For passive clients who need deep lateral support over the complete height of the backrest cushion
- Individual adjustable strap to optimise postural stability and provide correction / accommodation of mild to moderate postural deformity

### SIZES AVAILABLE

HEIGHT	WIDTH										
mm	380	400	420	440	460	480	500	520	540	560	660 Q700 M HD
440											
500											
560											

# FLEXIBLE, DEEP CONTOUR

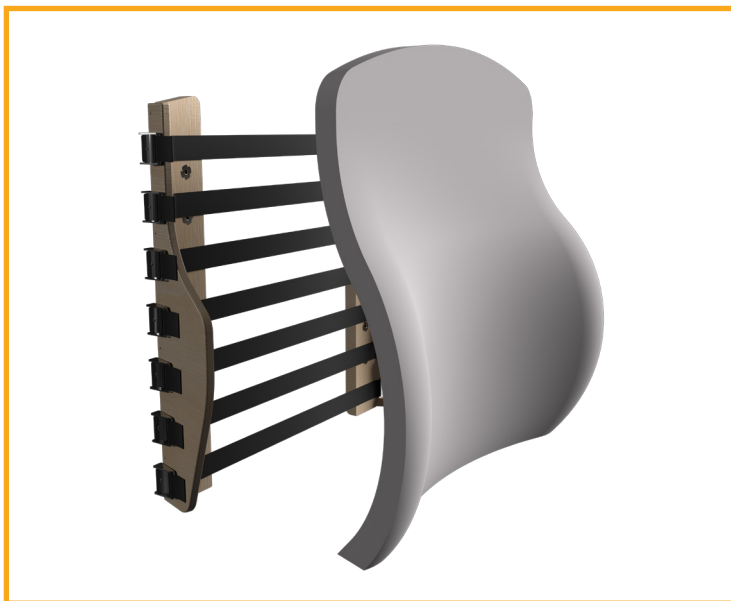
## ACTIVE WITH ADJUSTABLE STRAPS

**FLEXIBLE BASE WITH ADJUSTABLE STRAPS, WITH EXTENSIVE POSSIBILITIES TO FOLLOW AND SUPPORT THE CURVE OF THE CLIENT'S BACK**



### Product Features:

- Flexible base with adjustable straps, with extensive possibilities to follow and support the curve of the client's back
- Allows for stabilisation of the pelvis
- Adjustment possibility of the lateral support angle (more inward or more outward)
- Deep lateral support with free space in the shoulder region
- Individually adjustable
- Integrated flexible lateral supports instead of separate thoracic supports
- Incontinence and comfort cover



### Clinical Application:

- The individual adjustable strap supports an upright posture and provides a stable and ergonomic seating position.
- For active clients who need deep lateral support with free space in the shoulder region
- Individual adjustable strap to optimise postural stability and provide correction / accommodation of mild to moderate postural deformity

### SIZES AVAILABLE

HEIGHT	WIDTH										
mm	380	400	420	440	460	480	500	520	540	560	660 Q700 M HD
440											
500											
560											



# FLEXIBLE, EXTRA DEEP CONTOUR

## ACTIVE WITH ADJUSTABLE STRAPS

**FLEXIBLE BASE WITH ADJUSTABLE STRAPS, WITH EXTENSIVE POSSIBILITIES TO FOLLOW AND SUPPORT THE CURVE OF THE CLIENT'S BACK**



### Product Features:

- Flexible base with adjustable straps, with extensive possibilities to follow and support the curve of the client's back.
- Allows for stabilisation of the pelvis
- Adjustment possibility of the lateral support angle (more inward or more outward)
- Extra deep lateral support with free space in the shoulder region
- Individually adjustable
- Integrated flexible lateral supports instead of separate thoracic supports
- Incontinence and comfort cover



### Clinical Application:

- The individual adjustable straps supports an up-right posture and provides a stable and ergonomic seating position.
- For active clients who need deep lateral support with free space in the shoulder region
- Individual adjustable straps to optimise postural stability and provide correction / accommodation of mild to moderate postural deformity

### SIZES AVAILABLE

HEIGHT	WIDTH										
mm	380	400	420	440	460	480	500	520	540	560	660 Q700 M HD
440											
500											
560											

# FLEXIBLE BACK ADJUSTMENTS

## ON SEDEO LITE/PRO/ADVANCED



### Adjustments:

1. Adjust the backrest cushion to the right height for the user. Check that the cushion supports the upper pelvic area.
2. Adjust the angle of the lateral.
3. Loose all the straps with the client leaning in the backrest cushion.
4. Start with adjusting the straps in the pelvic region. Give support to the pelvic to prevent slouching.
5. Adjust the other straps to support the spine.

**TO FIND OUT MORE ABOUT THE FLEXIBLE BACKREST AND CUSHION, PLEASE CHECK THE QR CODE WITH YOUR PHONE CAMERA!**



# JAY J3 BACKS

## THE J3 BACK RANGE ...

... ALSO COMES IN A VARIETY OF WIDTHS AND HEIGHTS THAT ARE SELECTED IN ACCORDANCE WITH TRUNK WIDTH AND HEIGHT AND CHAIR WIDTH, ENSURING THAT THE BACK WILL FIT THE CLIENT AS WELL AS THEIR CHAIR.

### Four Contour depths

THE JAY J3 BACK OFFERS FOUR TYPES OF CONTOUR DEPTHS:

Shallow Contour (SC) which provides 50 mm depth, Mid Contour (MC) with 80 mm depth, Deep Contour (DC) & Mid Deep Contour (MDC) with 150 mm depth.

The MDC & DC Back are also available in an Extra Deep version with 180 mm depth.

#### Shallow Contour

Moderate lateral support



#### Mid Contour

Medium lateral support



#### Deep Contour, Extra Deep

Full lateral support



#### Mid Deep Contour, Extra Deep

Full lateral support





# JAY SYNCRA SEATING

## FOR SEDEO PRO ADVANCED

A COHESIVE AND ATTRACTIVE SEATING SYSTEM SPECIFICALLY DESIGNED FOR POWERED TILT AND RECLINE. JAY SYNCRA IS THE OPTIMAL SEATING FOR POWER WHEELCHAIR CLIENTS WHO HAVE A HISTORY OF PRESSURE INJURIES.

TO WATCH THE VIDEO ABOUT THE JAY SYNCRA PLEASE  
CHECK THE QR CODE WITH YOUR PHONE CAMERA!



# JAY SYNCRA SEATING

## POSITIONED FOR RECLINE

### Syncra Cushion

- Engineered to accommodate pelvic movement through recline
- Lowered rear pelvic wall
- Deeper leg troughs

### Syncra Back Support

- Scalloped back shell allows better posture during recline in upper line
- Optimal shell placement ideal for recline positioning
- Built-in adjustability – including 2" of width and height – accommodates patient changes

### Positioners & Supports

- Mounting positions optimised for WHITMYER® headrests with 2" lateral movement and left, right, or center mounting options
- Designed for integrating multiple lateral, trunk, and thigh support in upper line

### Cushion & Cover Options

The Syncra™ cushion has multiple covers and inserts that can be interchanged based on the client's needs.

### Cushion Inserts



JAY® Fluid with Cryo™ Technology

Visco Foam

### Cushion Covers



### Incontinence





3DX Microclimatic



# SEDEO LITE

## SEAT CUSHION RANGE



		POSTURAL SUPPORT REQUIREMENTS			RISK OF SKIN BREAKDOWN		
	SEATING OBJECTIVE	Enhance freedom of movement	Help prevent slouching	Enhance lateral stability	Provide pressure distribution	Limit risk of shear forces	Help prevent deformation of soft tissue
PROFILED		● ●	● ●	● ●	●	●	●
SUPPORT		●	● ● ●	● ● ● ●	● ●	● ● ●	● ●



# PROFILED

## COMFORTABLE PROFILED SEATING

### WITH LATERAL SUPPORTS

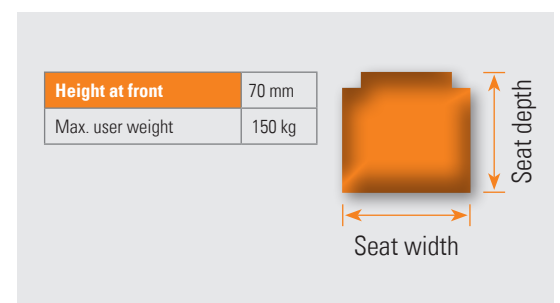
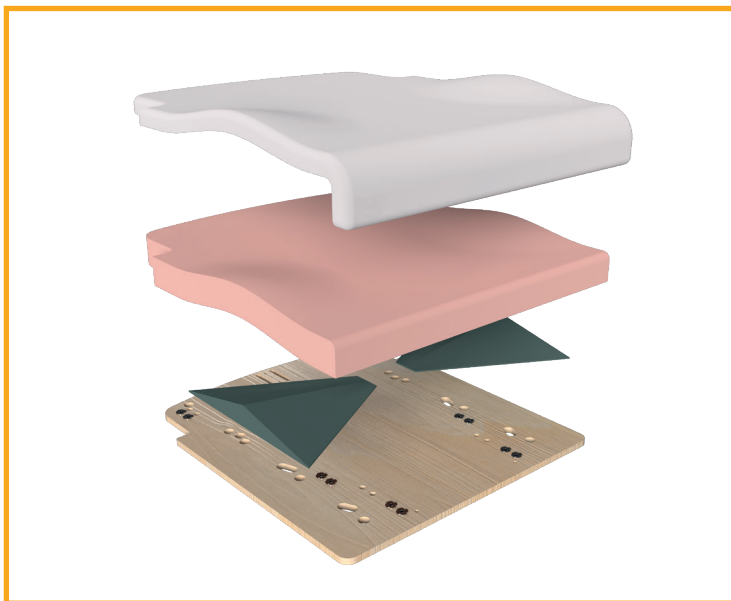


#### Product Features:

- Comfortable profiled seat with moderate lateral supports and a firm, flat base
- Incontinence cover & comfort cover

#### Clinical Application:

- Client has good body balance and needs moderate freedom of movement
- Client requires comfort with medium lateral support
- Low risk of skin breakdown or shear
- Client is able to do independent weight shifts and /or transfers



### SIZES AVAILABLE

DEPTH	WIDTH									
mm	380	400	420	440	460	480	500	520	540	560
460										
500										
560										

# SUPPORT

## ANATOMICALLY SHAPED

### ANATOMICALLY SHAPED CONTOUR WITH SOFT TOP LAYER

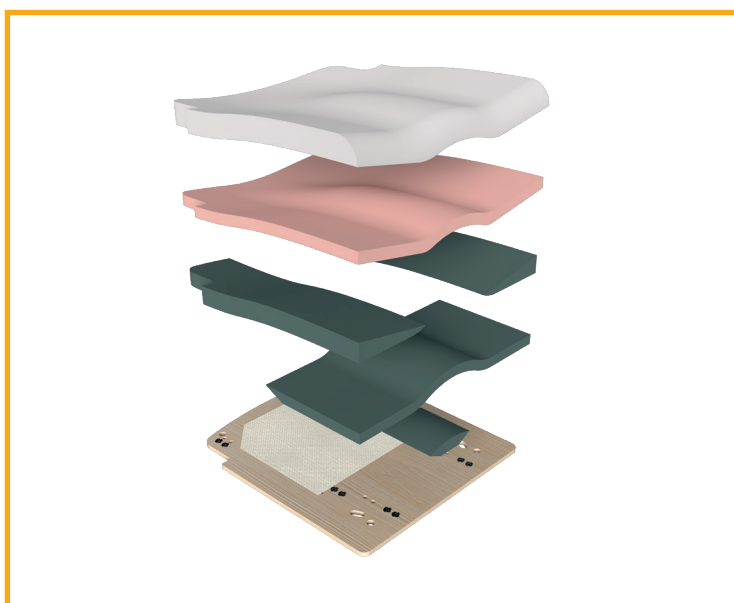


#### Product Features:

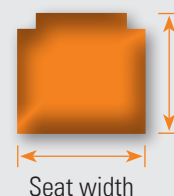
- Anatomically shaped contour with soft foam Top layer
- Medial and firm lateral thigh supports for optimal positioning
- Firm base with webbing to prevent bottoming out
- Incontinence and comfort cover

#### Clinical Application:

- Client needs maximum forward/rearward stability to prevent slouching
- Moderate risk of skin breakdown
- Helps prevent deformation of soft tissue



Height at front	90 mm
Max. user weight	100 kg



#### SIZES AVAILABLE

DEPTH	WIDTH									
mm	380	400	420	440	460	480	500	520	540	560
460										
500										
560										

# SEDEO PRO

## SEAT CUSHION RANGE

	SEATING OBJECTIVE	POSTURAL SUPPORT REQUIREMENTS			RISK OF SKIN BREAKDOWN		
		Enhance freedom of movement	Help prevent slouching	Enhance lateral stability	Provide pressure distribution	Limit risk of shear forces	Help prevent deformation of soft tissue
<b>PROFILED</b>		● ●	● ●	● ●	●	●	●
<b>SUPPORT</b>		●	● ● ●	● ● ●	● ●	● ● ●	● ●
<b>SUPPORT MEMORY</b>		●	● ● ●	● ● ●	● ● ●	● ● ●	● ●
<b>MEMORY (NL ONLY)</b>		●	● ●	● ●	● ●	● ●	● ●
<b>FORM (NL ONLY)</b>		●	● ● ●	● ● ●	● ● ●	● ● ●	● ●
<b>STABILIZER</b>		● ●	● ●	● ● ●	● ● ●	● ●	● ●

SEDEO PRO **PROFILED**

PAGE 44

SEDEO PRO **SUPPORT**

PAGE 45

SEDEO PRO **SUPPORT MEMORY**

PAGE 46

SEDEO PRO **MEMORY (NL ONLY)**

PAGE 47

SEDEO PRO **FORM (NL ONLY)**

PAGE 48

SEDEO PRO **STABILIZER**

PAGE 49



# PROFILED

## COMFORTABLE PROFILED SEATING

### WITH LATERAL SUPPORTS



#### Product Features:

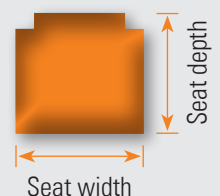
- Comfortable profiled seat with moderate lateral supports and a firm, flat base.
- Incontinence cover & comfort cover

#### Clinical Application:

- Client has good body balance and needs moderate freedom of movement
- Client requires comfort with medium lateral support
- Low risk of skin breakdown or shear
- Client is able to do independent weight shifts and /or transfers



Height at front	70 mm
Max. user weight	150 kg



### SIZES AVAILABLE

DEPTH	WIDTH										
mm	380	400	420	440	460	480	500	520	540	560	660 Q700 M HD
460											
500											
560											

# SUPPORT

## ANATOMICALLY SHAPED

### ANATOMICALLY SHAPED CONTOUR WITH SOFT TOP LAYER

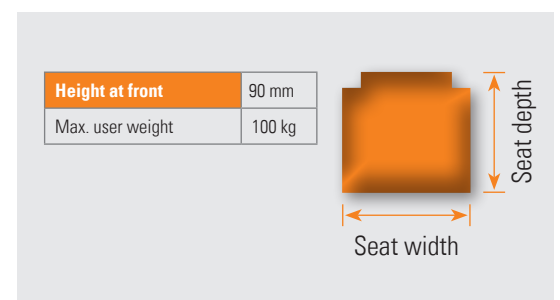


#### Product Features:

- Anatomically shaped contour with soft foam anatomically toplayer
- Medial and firm lateral thigh supports for optimal positioning
- Firm base with webbing to prevent bottoming out
- Incontinence and comfort cover

#### Clinical Application:

- Client needs maximum forward / rearward stability to prevent slouching
- Moderate risk of skin breakdown
- Helps prevent deformation of soft tissue



### SIZES AVAILABLE

DEPTH	WIDTH										
mm	380	400	420	440	460	480	500	520	540	560	660 Q700 M HD
460											
500											
560											

# SUPPORT MEMORY

## ANATOMICALLY SHAPED CONTOUR

### ANATOMICALLY SHAPED CONTOUR WITH MEMORY FOAM AT THE REAR

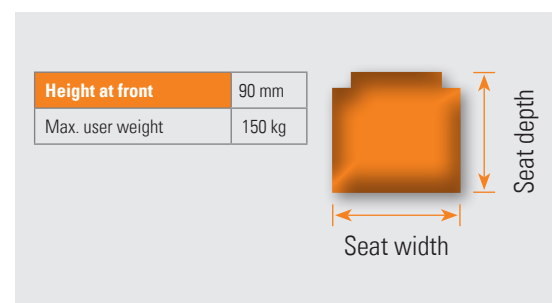
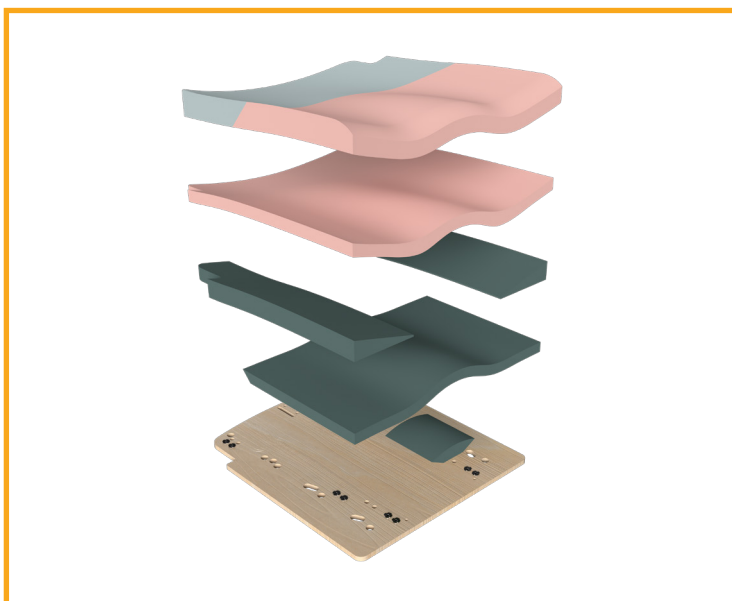


#### Product Features:

- Anatomically shaped contour with memory foam anatomically toplayer at the rear.
- Memory foam layer to allow immersion of the ischial tuberosities for more equal load distribution
- Split in memory foam and comfort foam helps prevent slouching
- Medial and firm lateral thigh supports for optimal positioning
- Firm, flat base
- Incontinence cover

#### Clinical Application:

- Client needs maximum forward/rearward stability to prevent slouching
- Client requires maximum lateral stability
- Moderate risk of skin breakdown
- Helps prevent deformation of soft tissue



#### SIZES AVAILABLE

DEPTH	WIDTH										
mm	380	400	420	440	460	480	500	520	540	560	660 Q700 M HD
460											
500											
560											



# MEMORY (NL ONLY)

## MEMORYFOAM FOR LOAD DISTRIBUTION

**MEMORYFOAM TOP LAYER TO ALLOW IMMERSION OF THE ISCHIAL TUBEROSITIES FOR LOAD DISTRIBUTION**

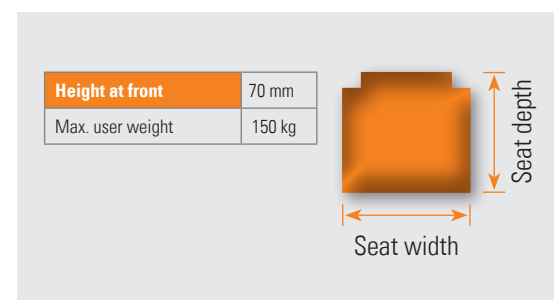
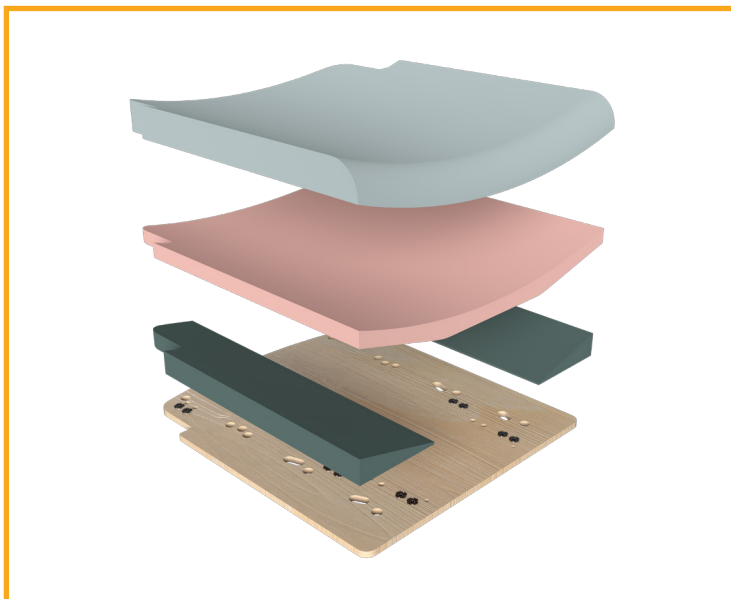


### Product Features:

- Comfortable profiled seat with firm lateral supports
- Memory foam top layer to allow immersion of the ischial tuberosities for more equal load distribution
- Comfort foam prevents bottoming out
- Firm, flat base
- Incontinence cover

### Clinical Application:

- Client requires comfort with medium lateral support
- Moderate risk of skin breakdown
- Helps prevent deformation of soft tissue



### SIZES AVAILABLE

DEPTH	WIDTH										
mm	380	400	420	440	460	480	500	520	540	560	660 Q700 M HD
460											
500											
560											

# FORM (NL ONLY)

## ANATOMICALLY SHAPED CONTOUR

**PRONOUNCED ANATOMICALLY SHAPED CONTOUR  
WITH COMFORT ANATOMICALLY TOP LAYER**

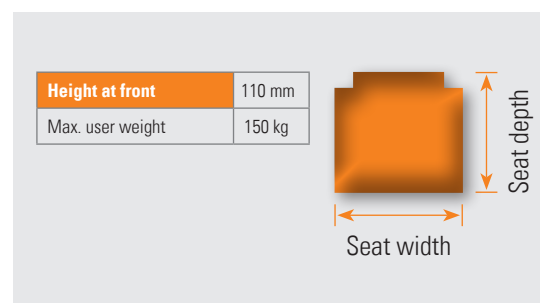
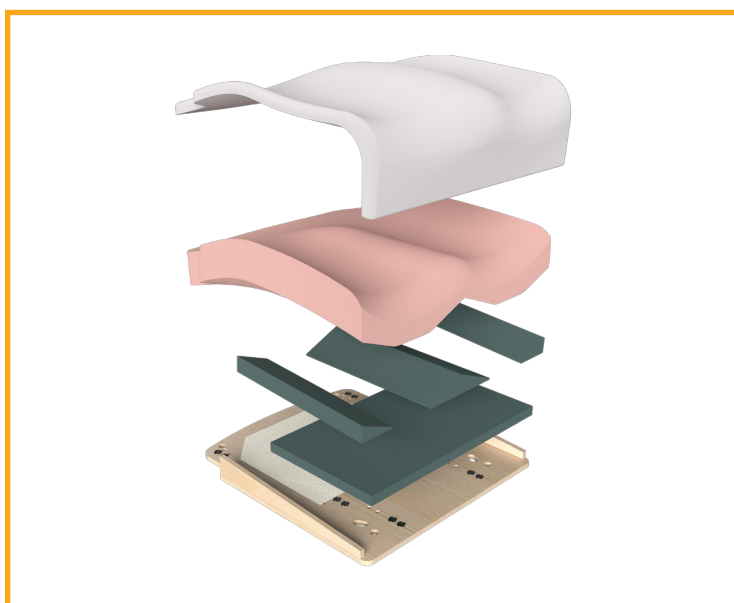


### Product Features:

- Extra medial and firm lateral thigh supports for optimal positioning
- Firm base with webbing to prevent bottoming out
- Incontinence cover

### Clinical Application:

- Client needs maximum forward / rearward stability to prevent slouching
- Client requires maximum lateral stability
- Medium risk of skin breakdown
- Helps prevent deformation of soft tissue



### SIZES AVAILABLE

DEPTH	WIDTH										
mm	380	400	420	440	460	480	500	520	540	560	660 Q700 M HD
460											
500											
560											

# STABILIZER

## EXCELLENT LATERAL STABILITY

**EXCELLENT LATERAL AND FORWARD/REARWARD STABILITY SUPPORT IS SHIFTED FROM THE ISCHIAL BONES TO THE TROCHANTERS TO MINIMISE THE RISK OF SKIN BREAKDOWN**

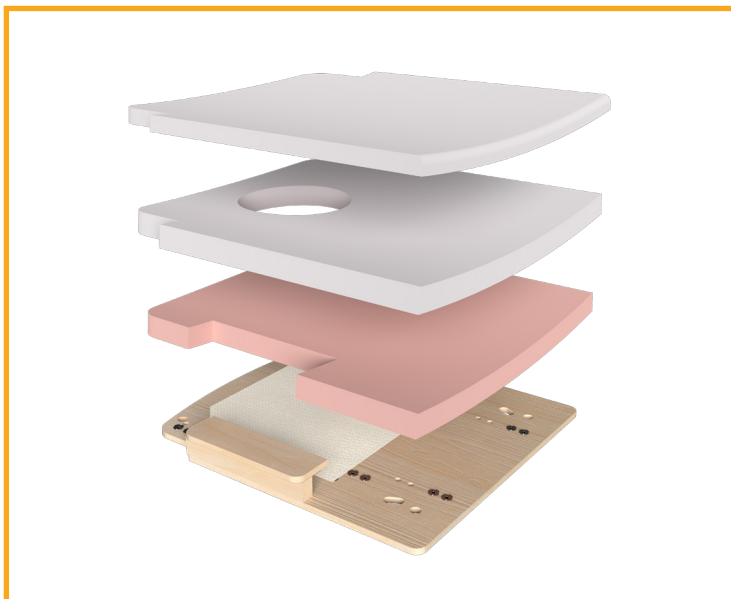


### Product Features:

- Internal construction of thigh and trochanter support
- Cut foam in the rear centre to allow immersion of the ischial tuberosities for more equal load distribution
- Firm base with webbing to prevent bottoming out
- Incontinence and comfort cover

### Clinical Application:

- Client has a good body balance and needs moderate freedom of movement
- Client needs moderate forward/rearward stability to prevent slouching
- Client requires maximum lateral stability
- Medium risk of skin breakdown or shear
- Helps prevent deformation of soft tissue



<b>Height at front</b>	90 mm
Max. user weight	150 kg

Advice is to order the seat one size wider than you normally would

### SIZES AVAILABLE

DEPTH	WIDTH										
mm	380	400	420	440	460	480	500	520	540	560	660 Q700 M HD
460											
500											
560											



# JAY CUSHIONS

## EASY TO ORDER

**THESE JAY CUSHIONS ARE EASY TO ORDER WITH THE SEDEO LITE SEATING SYSTEM  
(for more information about the clinical applications of these cushions we refer  
to the JAY Range brochure):**



JAY Balance



JAY J2



JAY J2 Deep Contour



JAY Xtreme Active



JAY Easy



JAY Soft Combi P







# PERFECT FIT HEADRESTS

## SEDEO HEADREST MOUNT

Very strong and easy to adjust in a variety of positions

Quickly return to the set position  
with the memory function

## SEDEO PRO



**SEDEO HEADREST PAD, FLEXIBLE**

400 x 110 mm



**SEDEO HEADREST PAD, SMALL**

240 x 150 mm, Cover optional

## WHITMYER®

A WIDE RANGE OF WHITMYER HEADRESTS IS AVAILABLE WITH THE SEDEO SEATING SYSTEMS TO MEET EVERY CLIENT'S CLINICAL NEEDS AND ENSURE WE OFFER THE BEST SEATING POSSIBLE.



LINX



LINX2



YYS Offset



AXYS



Cobra XTRA Flip Back



PLUSH



ADJUST-A-PLUSH



True integration of  
Whitmyer headrests

# SWITCH-IT

## INNOVATIVE CONTROLS

**A RANGE OF OPTIONAL SPECIAL INPUT DEVICES FROM SWITCH-IT ENSURES THAT THE CLIENT ACHIEVES OPTIMAL CONTROL OVER HIS/HER POWERCHAIR**

Whether it's a joystick, switch or head array, the control system can be customised to complement the SEDEO PRO and SEDEO PRO ADVANCED seating system to meet every need.



# LINK-IT

## MOUNTING SYSTEM

By using a combination of available modules and rods, you can create an endless number of combinations to accommodate what your client needs.

Not only is it easy to position, Link-It also ensures the minimalistic, clean design of the wheelchair isn't compromised by additional controls. So whether it's an extra controller on the armrest, a push button on the backrest or a switch on the headrest, just link it.







**Sunrise Medical GmbH**

Kahlbachring 2-4  
69254 Malsch/HD

Tel.: +49 (0) 72 53 / 9 80-0

Fax: +49 (0) 72 53 / 9 80-222

E-Mail: [international@sunrisemedical.de](mailto:international@sunrisemedical.de)

[www.SunriseMedical.eu](http://www.SunriseMedical.eu)



For further information on the full specification, options and accessories, please refer to the order form. All information is subject to change without notification. Please consult Sunrise Medical with any queries you may have. If you are visually impaired, this document can be viewed in PDF format at [www.SunriseMedical.eu](http://www.SunriseMedical.eu).