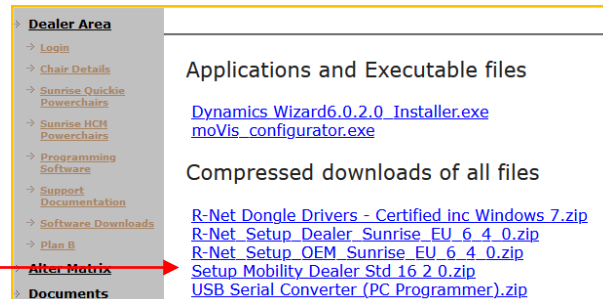


BULLETIN DETAILS

| | | |
|-----------------------------------|--|-----|
| Product Group: | Power | |
| Model Affected: | All Power Chairs with VR2 Power Module | |
| Effective Date: 01.04.2023 | Serial No. Effective From: | N/A |
| Bulletin Subject: | New VR2 PM2 Power Module | |

A new mobility programmer 6.2.0 has been released to be able to program power chairs in the future, due to a necessary microprocessor update for all VR2 power modules (from 50A to 90A),

The new dealer mobility programmer version (16.2.0) can be downloaded through WebIQ in the section shown in the screenshot below:



New VR2 PM2 features:



1. The new VR2 PM2 hardware can be identified with the label having the additional number attached:

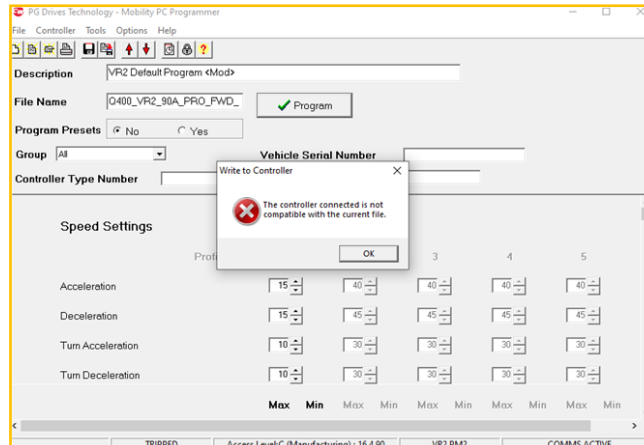


2. The new VR2 PM2 power module has an additional connector attached that has NO function.

3. Follow this sequence when programming:

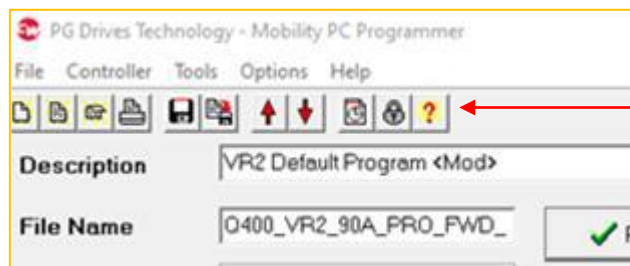
- A. Connect the chair to the dongle with the programming interface cable.
- B. Switch the chair on.
- C. Start the mobility programmer on your PC.
(The programming software will then automatically detect the Hardware version VR2 or VR2 PM2)
- D. Load the appropriate setup and continue as usual with the programming.

4. When trying to upload the parameters whilst the mobility programme is open and the powerchair connected. If you get the message (in the image below), follow the procedure of item 3



5. Programming and operating the chair with VR2 PM2 is the same as the current version

6. The mobility programmer version can be identified by clicking on the red/yellow question mark button.



7. All VR2 Joystick modules (Current and Legacy) are 100% compatible with the new VR2 PM2 module.

The new mobility programmer is compatible with all VR2 power modules in the field.

For any queries on any of these updates please contact your local Area Sales Manager.

| Customer Services | Customer Support | Technical Service Centre | E-mail |
|-------------------|--|--|-------------------------------|
| Telephone: | +44 (0)845 605 66 88 Option 1-1 | +44 (0)845 605 66 88 Option 1-2 | enquiries@sunmed.co.uk |

