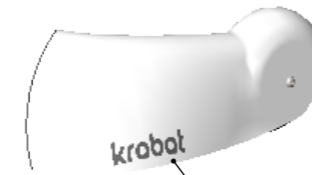
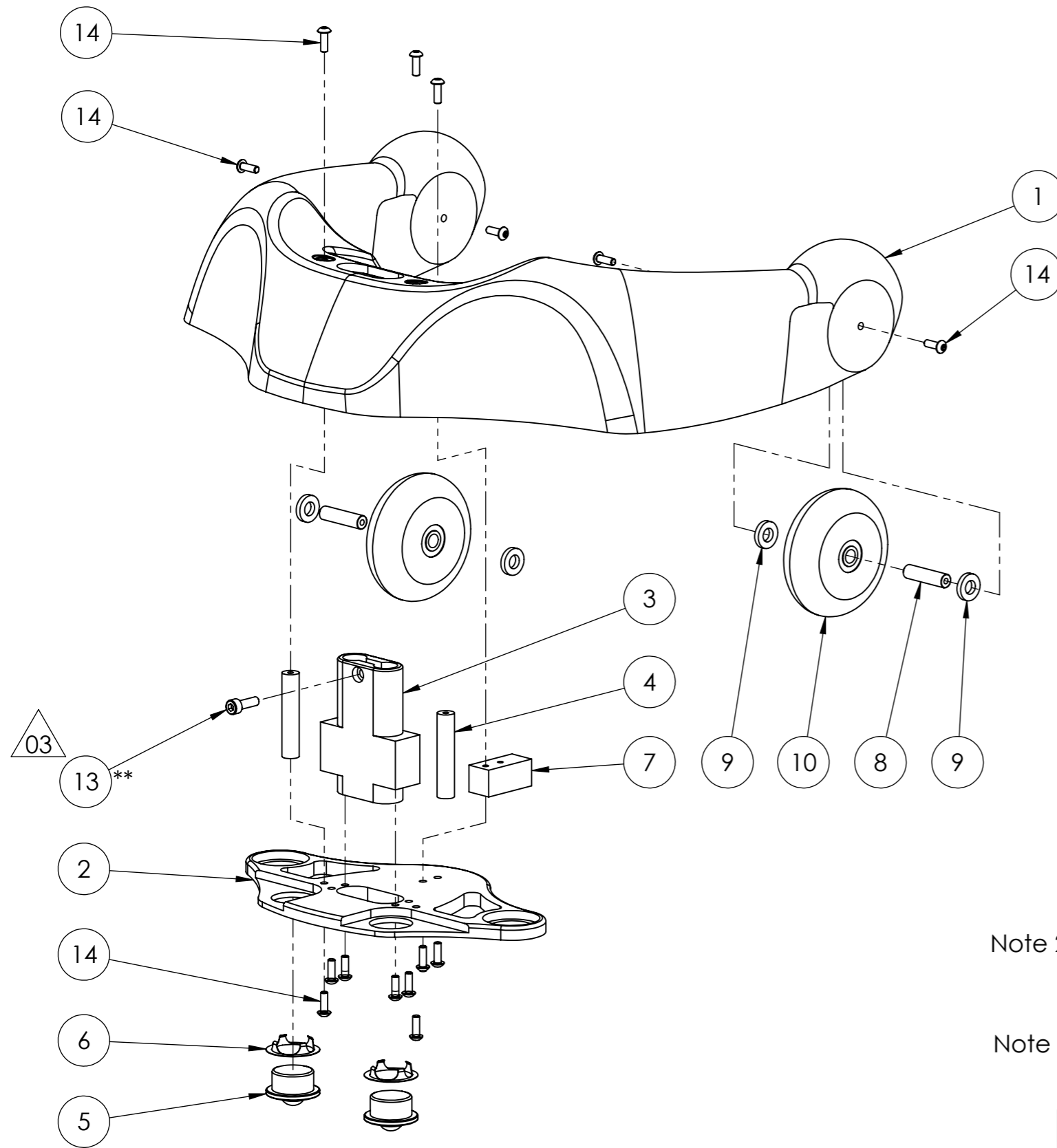


ITEM NO.	PART NUMBER	Title	QTY.
1	100-1102	Assy, base	1
2	100-1101	Assy, adjustment	1
3	100-2114	Cushion Front	1
4	100-2115	Cushion Back	1

UNLESS OTHERWISE SPECIFIED:				<div style="background-color: yellow; padding: 5px; display: inline-block;">Krabat Pilot</div>	
ALL DIMENSIONS ARE IN MILLIMETERS	TOLERANCES, LINEAR/ ANGULAR: NS-ISO 2768-1-m-K	DEBUR AND BREAK SHARP EDGES	PAPER SIZE: A3		
		MATERIAL:	TITLE: Main assy		
		TREATMENT:	DWG NO. 100-1001		
NAME	SIGNATURE	DATE	FINISH:	REVISION	00
DRAWN A.S.		10.05.17			
CHK'D					
APPV'D			WEIGHT:	SHEET 1 OF 1	SCALE:1:3 DO NOT SCALE DRAWING



Place "KRABAT" logo 900-1099 like shown here



02

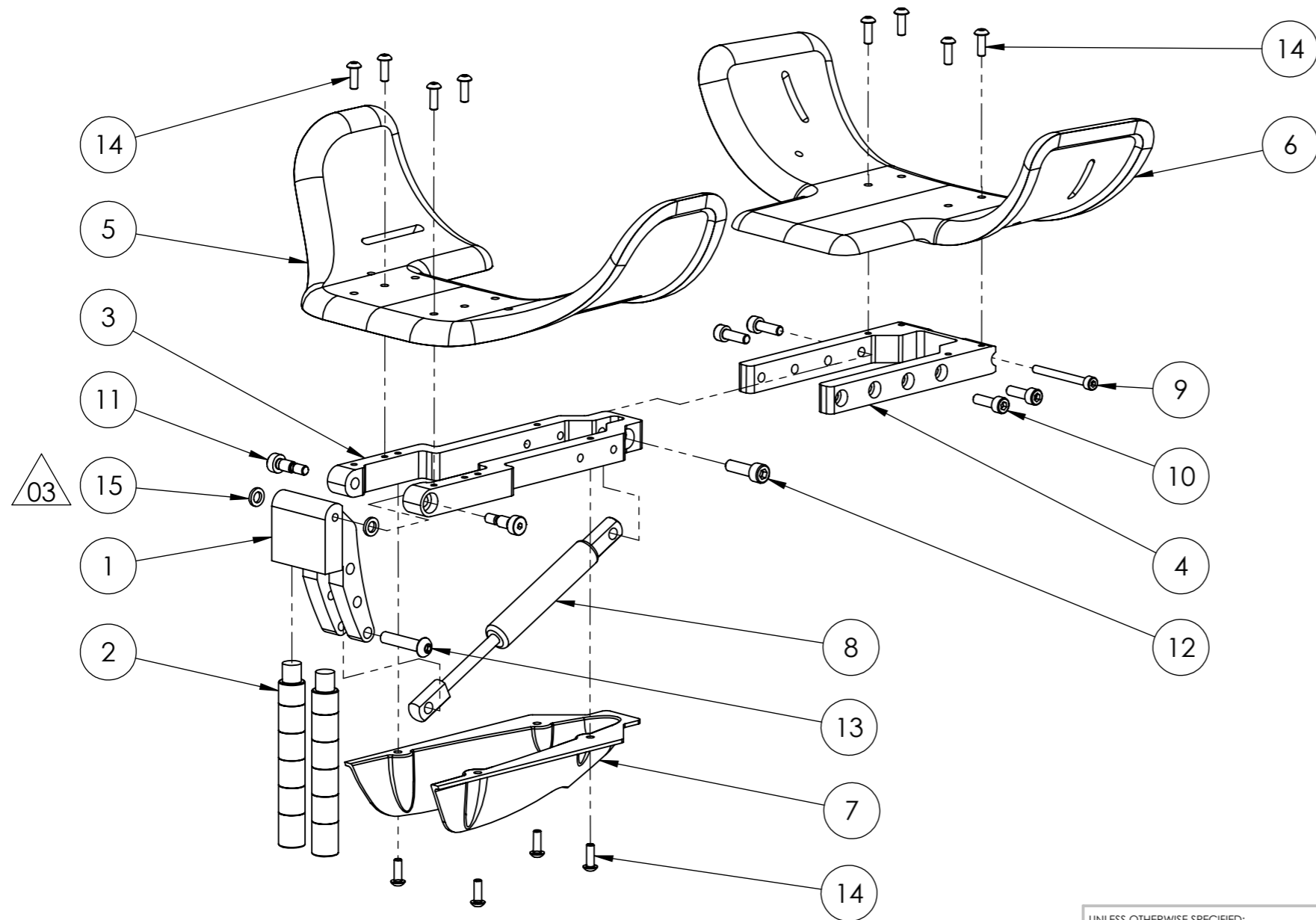
General note:
All fasteners (Item 14) to be tightened properly!

ITEM NO.	PART NUMBER	Title	QTY.
1	100-2111	Shell	1
2	100-2102	Base	1
3	100-2103	Base Height Adjustment	1
4	100-2109	Spacer Shell	2
5	900-1119	Alwaysse Euro Ball - 515014	2
6	900-1120	Alwaysse 515-7104-810-1415	2
7	100-2106	Multi Support	1
8	100-2101	Axle Wheel	2
9	900-1121	Nylon washer, Torp code: 213 081 x 158 x 31	4
10	900-1118	Wheel Ø75	2
11	100-2123	Serial number, Pilot	1
12	900-1099	Krabat Logo, Carved Silver (22 mm x 90 mm)	1
Note 2 **	13	DIN 912 M5 x 16 --- 16N - St - 10.9 - EZ	1
	14	ISO 7380 - M4 x 12 - 12N - St - 10.9 - EZ	15
Note 1 *	15	Allen key 4mm DIN 911	1
	16	Allen key holder	1
	17	Velcro 25 x 70	1

Note 1:
Items 15, 16 and 17 to be assembled and attached according to drawing 900-1125

Note 2:
Add a small amount of grease to threads of Item 13 before assembly.

UNLESS OTHERWISE SPECIFIED:				<div style="background-color: yellow; padding: 5px; display: inline-block;">Krabat Pilot</div>	
ALL DIMENSIONS ARE IN MILLIMETERS	TOLERANCES, LINEAR/ ANGULAR: NS-ISO 2768-1-m-K	DEBUR AND BREAK SHARP EDGES	PAPER SIZE: A3		
		MATERIAL:	DWG NO. <div style="background-color: yellow; padding: 5px; display: inline-block; font-size: 1.2em;">100-1102</div> REVISION 03		
		TREATMENT:			
DRAWN: A.S.	SIGNATURE:	DATE: 10.05.17	FINISH:	SHEET 1 OF 1	
CHK'D:			WEIGHT:	SCALE:1:3 DO NOT SCALE DRAWING	
APP'VD:					



ITEM NO.	PART NUMBER	Title	QTY.
1	100-2104	Force Adjustment	1
2	100-2107	Rod Height Adjustment	2
3	100-2108	Rotation Plate	1
4	100-2105	Lenght Adjustment Plate	1
5	100-2113	Board Front	1
6	100-2112	Board Back	1
7	100-2110	Cover	1
8	100-1104	Gas spring assy (160N)	1
9	DIN 912 M4 x 40 --- 20N - St - 10.9 - EZ		1
10	DIN 912 M5 x 16 --- 16N - St - 10.9 - EZ		4
11	ISO 7379 - 6 x 10 --- N - St - 10.9 - EZ		2
12	DIN 912 M6 x 20 --- 20N - St - 10.9 - EZ		1
13	ISO 7380 - M6 x 30 - 30N - St - 10.9 - EZ		1
14	ISO 7380 - M4 x 12 - 12N - St - 10.9 - EZ		12
15	900-1038	Nylon washer, Torp code: 213 059 x 103 x 15	2

UNLESS OTHERWISE SPECIFIED:				<div style="text-align: center;">Krabat Pilot</div>	
ALL DIMENSIONS ARE IN MILLIMETERS	TOLERANCES, LINEAR/ ANGULAR: NS-ISO 2768-1-m-K	DEBUR AND BREAK SHARP EDGES	PAPER SIZE: A3		
		MATERIAL:	TITLE: Assy, adjustment		
		TREATMENT:	DWG NO. 100-1101 REVISION 03		
NAME	SIGNATURE	DATE	FINISH:	SHEET 1 OF 1	
DRAWN A.S.		10.05.17	WEIGHT:	SCALE:1:3	DO NOT SCALE DRAWING
CHK'D					
APP'VD					