



# Leckey Horizon




CE

Name	
Date:	
Email	
Contact Number	
Invoice Address	
Delivery Address	

Quote     Order

Purchase Order	
----------------	--



	Item Code	Description	Quantity	Price
<b>Chassis</b>				
				
<input type="checkbox"/>	LHZ/1/177-EXP	Size 1 Horizon Chassis		XXX
<input type="checkbox"/>	LHZ/2/177-EXP	Size 2 Horizon Chassis		XXX
<input type="checkbox"/>	LHZ/3/177-EXP	Size 3 Horizon Chassis		XXX
<b>Spine</b>				
				
<input type="checkbox"/>	LHZ/1/198-GRB-EUR	Horizon Size 1 Extrusion with Chest Pad Hip Pad Chest Laterals - Grey		XXX
<input type="checkbox"/>	LHZ/1/198-GB-EUR	Horizon Size 1 Extrusion with Chest Pad Hip Pad Chest Laterals - Green		XXX
<input type="checkbox"/>	LHZ/1/198-BB-EUR	Horizon Size 1 Extrusion with Chest Pad Hip Pad Chest Laterals - Blue		XXX
<input type="checkbox"/>	LHZ/2/198-GRB-EUR	Horizon Size 2 Extrusion with Chest Pad Hip Pad Chest Laterals - Grey		XXX
<input type="checkbox"/>	LHZ/2/198-GB-EUR	Horizon Size 2 Extrusion with Chest Pad Hip Pad Chest Laterals - Green		XXX
<input type="checkbox"/>	LHZ/2/198-BB-EUR	Horizon Size 2 Extrusion with Chest Pad Hip Pad Chest Laterals - Blue		XXX
<input type="checkbox"/>	LHZ/3/198-GRB-EUR	Horizon Size 3 Extrusion with Chest Pad Hip Pad Chest Laterals - Grey		XXX
<input type="checkbox"/>	LHZ/3/198-GB-EUR	Horizon Size 3 Extrusion with Chest Pad Hip Pad Chest Laterals - Green		XXX
<input type="checkbox"/>	LHZ/3/198-BB-EUR	Horizon Size 3 Extrusion with Chest Pad Hip Pad Chest Laterals - Blue		XXX
<b>Pelvic Support</b>				
				
		Hip Laterals		
		Pelvic Belt		
<input type="checkbox"/>	LHZ/1/164	Horizon Size 1 Hip Laterals		XXX
<input type="checkbox"/>	LHZ/2/164	Horizon Size 2 Hip Laterals		XXX
<input type="checkbox"/>	LHZ/3/164	Horizon Size 3 Hip Laterals		XXX
<input type="checkbox"/>	LHZ/1/181	Horizon Size 1 SUPINE Pelvic Belt		XXX
<input type="checkbox"/>	LHZ/2/181	Horizon Size 2 SUPINE Pelvic Belt		XXX
<input type="checkbox"/>	LHZ/3/181	Horizon Size 3 SUPINE Pelvic Belt		XXX

Tray				
  				
	Supine Stander tray	Prone Stander tray	Padded tray insert	
<input type="checkbox"/>	LHZ/1/158	Horizon Size 1 PRONE TRAY		XXX
<input type="checkbox"/>	LHZ/1/143	Horizon Size 1 SUPINE TRAY		XXX
<input type="checkbox"/>	LHZ/2/158	Horizon Size 2-3 PRONE TRAY		XXX
<input type="checkbox"/>	LHZ/2/143	Horizon Size 2-3 SUPINE TRAY		XXX
<input type="checkbox"/>	LHZ/1/109	Padded Tray Insert for Size 1 Tray		XXX
<input type="checkbox"/>	LHZ/2/109	Padded Tray Insert for Size 2/3 Tray		XXX
<input type="checkbox"/>	101-3690	Horizon Size 1 Mygo Stander Tray for Horizon		XXX
<input type="checkbox"/>	101-3691	Horizon Size 2-3 Mygo Stander Tray for Horizon		XXX
Chest Support (Laterals Included with Extrusion)				
				
<input type="checkbox"/>	101-2120	Hyperextension Pads for Laterals		XXX
Knees				
 				
	Knee Pads	Knee Extension Brackets		
<input type="checkbox"/>	LHZ/1/167	Horizon Size 1 Knees (pair) - short adjustment 30mm-80mm or flip the bracket and it can be used for long adjustment 20mm- 20mm		XXX
<input type="checkbox"/>	LHZ/2/167	Horizon Size 2-3 Knees (pair) - short adjustment 30mm-80mm or flip the bracket and it can be used for long adjustment 20mm- 20mm		XXX
<input type="checkbox"/>	LHZ/4/167	Horizon Size 4 Large Knees (pair) - short adjustment 30mm-80mm or flip the bracket and it can be used for long adjustment 20mm- 20mm		XXX
<input type="checkbox"/>	LHZ/1/104	Horizon Size 1 Wide Knees (pair)		XXX
<input type="checkbox"/>	LHZ/2/104	Horizon Size 2-3 Wide Knees (pair)		XXX
<input type="checkbox"/>	101-2224	Medium Knee Adjustment Bracket (125mm-175mm adjustment)		XXX
<input type="checkbox"/>	101-2225	Long Knee Adjustment Bracket (175mm-225mm adjustment)		XXX
Headrest				
  				
	Flat Headrest	Head lateral supports	Extended Head Rest Brackets	
<input type="checkbox"/>	LHZ/1/169	Horizon Size 1 Headsupport complete		XXX
<input type="checkbox"/>	LHZ/2/169	Horizon Size 2-3 Headsupport complete		XXX
<input type="checkbox"/>	LHZ/2/117	Horizon Size 2-3 Head Lateral Supports		XXX
<input type="checkbox"/>	101-1959	Headrest 4 Inch Extension Bracket		XXX

### Foot Support



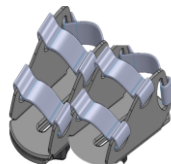
Flip Up Footplate



3D Footplate



Sandals



Open-back sandals



Booties



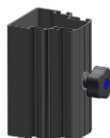
Ankle Huggers



Ankle Wraps

<input type="checkbox"/>	LHZ/1/161	Horizon Size 1 Flip-up Footplate Assy		XXX
<input type="checkbox"/>	LHZ/2/161	Horizon Size 2-3 Flip-up Footplate Assy		XXX
<input type="checkbox"/>	LHZ/3/160	Horizon Size 1-3 3D Footplate Assy INC. SANDALS		XXX
<input type="checkbox"/>	152-1600	Sandals Size 1		XXX
<input type="checkbox"/>	152-2600	Sandals Size 2		XXX
<input type="checkbox"/>	152-3600	Sandals Size 3		XXX
<input type="checkbox"/>	LHZ/1/100	Size 1 open-back sandals		XXX
<input type="checkbox"/>	LHZ/2/100	Size 2 open-back sandals		XXX
<input type="checkbox"/>	LHZ/3/100	Size 3 open-back sandals		XXX
<input type="checkbox"/>	LHZ/4/100	Size 4 open-back sandals		XXX
<input type="checkbox"/>	AH01	Ankle Huggers		XXX
<input type="checkbox"/>	173-2305	Small Ankle Wraps (use with sandals)		XXX
<input type="checkbox"/>	173-3305	Large Ankle Wraps (use with sandals)		XXX

### Accessories



Spine Extension



Lateral Spacer

<input type="checkbox"/>	LHZ/1/166	Horizon Bracket to extend outer shaft/spine by 150mm		XXX
<input type="checkbox"/>	RAF-4-1723	Horizon 1 Inch Lateral Spacer		XXX

### Harness



<input type="checkbox"/>	155-N001-L600	Small Butterfly Harness & attachment straps		XXX
<input type="checkbox"/>	155-N001-L601	Medium Butterfly Harness & attachment straps		XXX
<input type="checkbox"/>	155-N001-L602	Large Butterfly Harness & attachment straps		XXX
<input type="checkbox"/>	155-N001-L603	X Large Butterfly Harness & attachment straps		XXX

	Size 1	Size 2	Size 3
Age	4-10	8-14	14-Adult
User Height	1000mm-1400mm (39.3"-55.1")	1400mm-1800mm (55.1"-70.8")	1550mm-1800mm (61"-70.8")
Max. User Weight	50kg (110lbs)	80kg (176lbs)	100kg (220lbs)
Shoulder Height (footplate to top of pad)	820mm-1150mm (32.2"-45.2")	1000mm-1450mm (39.3"-57")	1000mm-1450mm (39.3"-57")
Hip Pad Height (footplate to top of pad)	450mm-750mm (17.7"-29.5")	750mm- 950mm (29.5"-37.4")	750mm-1150mm (29.5"-45.2")
Hip Pad Width	175mm-270mm (6.8"-10.6")	210mm-390mm (8.2"-15.3")	310mm-470mm (12.2"-18.5")
Knee Height (footplate to middle of pad)	250mm- 450mm (9.8"-17.7")	400mm-550mm (15.7"-21.6")	400mm-650mm (15.7"-25.5")
Width Between Chest Laterals	200mm-300mm (7.8"-11.8")	240mm-380mm (9.4"-14.9")	340mm-460mm (13.3"-18.1")
Footplate Angle Adjustment +/-	10°	10°	10°
Angle Adjustment	0°-90°- Prone 0°-90°- Supine	0°-90°- Prone 0°-90°- Supine	0°-90°- Prone 0°-90°- Supine
Tray Angle Adjustment	0°-40°- Prone +/- 20°/30°- Supine	0°-40°- Prone +/- 20°/30°- Supine	0°-40°- Prone +/- 20°/30°- Supine