



# KRYPTON R

Krypton R\_EU-Template\_2023-12-11

Deliver to:  
Name:  
Street:  
Town: Postal code:  
E-Mail:  
Tel: Fax:



Deliver to:  
Name:  
Street:  
Town: Postal code:  
E-Mail:  
Tel: Fax:

Order date:  
Purchase order:  
Number required:

Marked for:

Sunrise order no:

- = Standard      □ = Cost option  
./ = Price reduction      ○ = No cost option

☐ Order    ☐ Calculation    ☐ Built 4 me (longer leadtime)

Reimbursement code:

Art. no. IC: 770 00 001

Art. No. DE: 770 00 000

Max. user weight: 125 kg

USER WEIGHT  kg

Mandatory information to ensure correct configuration

**Base Price**

## KRYPTON R: STANDARD CONFIGURATION

# KRYPTON R

- Rigid wheelchair
- Carbon fibre frame
- Adjustable back angle
- Foldable backrest
- Adjustable COG
- Rear seat height adjustable +/- 1cm
- Carbon fibre axle-stems
- Carbon fibre axle tube



Krypton R

● = Standard      ○ = No cost option      □ = Cost option

CLIENT MEASUREMENTS (all measurements without cushion)

SEAT WIDTH SELECTION - in mm; measured from outside frame tube to outside frame tube

320	340	360	380	400	420	440	460
○	○	○	○	○	○	○	○

SEAT DEPTH SELECTION - in mm

340	360	380	400	420	440	460	480
○	○	○	○	○	○	○	○

FRONT SEAT HEIGHT SELECTION - in dependance of front castor size, fork, frame height version  
The high frame is 40 mm higher than the low frame.

Front Castor

			Front seat height in mm													
		Fork (length)	Frame:	430	440	450	460	470	480	490	500	510	520	530	540	550
3"	111 mm	low		○	○	○										
	123 mm					○	○	○								
	Frog Leg						□	□								
	One Arm		□	□	□											
	111 mm	high					○	○	○							
	123 mm								○	○	○					
	Frog Leg										□	□				
	One Arm						□	□	□							
4"	111 mm	low			○	○	○	○								
	123 mm					□	□	□	□							
	Frog Leg						□	□	□							
	One Arm			□	□	□	□									
	111 mm	high						○	○	○	○					
	123 mm								□	□	□	□				
	Frog Leg										□	□	□			
	One Arm							□	□	□	□					
5"	111 mm	low					○	○	○							
	123 mm						□	□	□							
	Frog Leg							□	□	□						
	One Arm					□	□	□								
	111 mm	high								○	○	○				
	123 mm										□	□	□			
	Frog Leg											□	□	□		
	One Arm									□	□	□				
6"	123 mm	high										□	□	□		
	Frog Leg												□	□	□	

REAR SEAT HEIGHT SELECTION - in dependance of rear wheel size  
The rear seat height is adjustable ± 10 mm.  
The rear seat height can only be between 0 cm and 110 mm below the selected front seat height.  
**Caution:** with rear seat heights 460 mm and above, the width between the sideguards increases by 35 mm

Rear seat height in mm														
Rear Wheels	380	390	400	410	420	430	440	450	460	470	480	490	500	
24"	○ <sup>(1)</sup>	○ <sup>(2)</sup>	○ <sup>(2)</sup>	○	○	○	○	○	○	○	○	○ <sup>(3)</sup>		
25"		○ <sup>(1)</sup>	○ <sup>(2)</sup>	○ <sup>(2)</sup>	○	○	○	○	○	○	○	○	○ <sup>(3)</sup>	

### Please follow this measuring method:

The following method is recommended on the basis of extensive practical experience. Deviations are possible in individual instances.

#### Seat width (SW):

- a) *For the user:* Allow space between sideguard and hip on each side of the chair  
(approx. 10 - 20 mm altogether)
- b) *On the wheelchair:* From outside frame tube to outside frame tube.

#### Seat depth (SD):

- a) *For the user:* When sitting upright: leave space for 2 - 3 fingers between  
front edge of the seat upholstery and back of knee  
(approx. 30 - 60 mm). Care must be taken with adj. upholstery.
- b) *On the wheelchair:* From back tube to front of seat upholstery.

#### Front seat height:

- a) *For the user:* When sitting with 90° kneeangle:  
From back of knee to bottom of shoe sole.
- b) *On the wheelchair:* From front of seat tube to the ground .  
(min. 30 mm longer than user measurement)  
Remember to include the cushion height.

#### Rear seat height:

- b) *On the wheelchair:* From back of seat tube to the ground.  
**Note:** Max. seat height difference rear to front is 130 mm

#### Back height:

- a) *For the user:* From the seat, including cushion, to be no more than 10 - 20 mm below the lower shoulder blade.
- b) *On the wheelchair:* From back of seat tube to upper edge of backrest upholstery.  
**Note:** The user's ability to sit upright has a major influence on the back height  
and it can therefore differ considerably

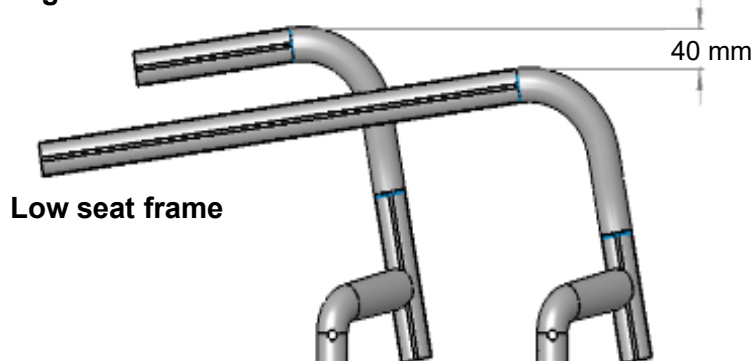
#### Back angle:

**Important:** The back height depends on the degree of disability.  
0° is the angle 90° to the seat. Negative angles are <90°  
and positive angles are >90°.

#### Low Seat Frame vs. High Seat Frame:

The high frame is 40 mm higher than the low frame. So you can choose shorter and lighter forks to minimize the weight of your wheelchair.

##### High seat frame



#### Technical Data Overview:

<b>Max. overall height:</b>	950 mm	<b>Max. overall width:</b>	<b>Camber</b>	<b>24" rear wheel</b>	<b>25" rear wheel</b>
<b>Max. overall length:</b>	930 mm		For 0° camber:	SW + 170 mm	SW + 170 mm
<b>Max. turning circle:</b>	700 mm		For 3° camber:	SW + 230 mm	SW + 240 mm
<b>Max. safe slope:</b>	7°				
<b>Wheelchair weight:</b>	from 6,2 kg				
<b>Dismantled weight:</b>	from 3,7 kg				
<b>Weight of heaviest part:</b>	2,1 kg				

All changes in the configuration might change the seat heights.  
Manufacturing tolerances are +/- 10 mm for all measurements.

WEIGHT

We want to be very transparent on weight. The following information will be a guide to the lightest possible Krypton R: how to achieve a 6,2 kg wheelchair, and how to order the lightest possible configuration for your Krypton R

Krypton R: 6,2 kg configuration  
Transport weight: 3,7 kg

**Frame:** high frame, 92°, 30 mm inset, seat width: 360 mm, seat depth: 400 mm. Seat height: front 470 mm, rear 420 mm. Seat-sling Airflow superlight.

**Wheel-lock :** lightweight compact wheel-lock

**Footrest:** tubular footrest



**Backrest:** Carbon backrest, EXO superlight backrest-upholstery, without push-handles

**Sideguards:** Carbon fibre, slim-style

**Rear wheels:** 24" Proton wheels with Aluminium handrims (coated or anodized) and Schwalbe One tyres

**Forks and casters:** 111 mm carbotechnology fork, 3" caster

Please mind that there is a 5% tolerance on all weight specifications due to weight deviations on mounting parts (tyres, caster-wheels etc.)

LIGHTWEIGHT-GUIDE FOR ORDERING THE KRYPTON R

Sunrise Medical offers a wide variety of options for the Krypton R to suit every user’s needs. However, most options add significant weight to the wheelchair. To make this more transparent when filling in the order-form, and to assist you in ordering the lightest possible wheelchair, we indicate the approximate weight-increase of the options on the order form:

- (L) indicates the lightest possible option within the range of options
- (+) indicates that this option adds more than 500 g to the wheelchair’s weight compared to the lightest option within the range

LIGHTWEIGHT OPTIONS FOR THE KRYPTON R

We developed several options for the Krypton R to save weight on the chair without sacrificing daily-use suitability, comfort or durability



**Carbon backrest (KRR030006):** full carbon backrest with very close cross-tube (20mm cross-tube to backrest-upholstery) (-100 g compared to Standard backrest)



**Seat sling "airflow" superlight (KRR020019):** fully adjustable seat-sling with composite buckles and lighter straps (max. user weight 85 kg) (-100 g compared to seat sling "airflow")



**EXO superlight (KRR030005):** lightweight version of the EXO backrest upholstery. EVA-foam padding, adjustable straps, wider cut of the upholstery to cover backrest tubes. (-160 g compared to Std. EXO backrest-upholstery)



**Axle-plug superlight (KRR070049):** (only 0° camber): glued into the axle-tube, no adjustability of the track-width possible (-160 g compared to width-adjustable axle-plug KRR070600 / 603)



# Krypton R

● = Standard    ○ = No cost option    □ = Cost option

Price in €

## SEAT UPHOLSTERIES AND CUSHIONS

### Seat Sling

KRR020012	○	Seat sling "airflow" with 1 utility bag	
KRR020017	□	Seat sling "airflow" with 2 utility bags	
KRR020018	□	Seat sling "airflow" with utility bag and catheter bag (from SW 340mm)	
KRR020019	□	Seat sling "airflow" superlight. Without bags, max user weight 85kg (1) (L)	
KRR020000	○	Without seat sling	

### Seat cushion black cover

Foam: (medium soft)	Thickness:	KRR020101	□	30 mm	KRR020102	□	50 mm	
---------------------	------------	-----------	---	-------	-----------	---	-------	--

### JAY Cushions - for complete product range see Jay order forms

JAY020002	□	JAY Basic	
JAY020003	□	JAY Soft Combi P	
JAY020001	□	JAY Easy Visco, Curved Base	
JAY020007	□	JAY Easy Fluid, Curved Base	
JAY020004	□	JAY Lite	

### Seat accessories

KRR090018	□	Positioning belt (only with Standard backrest)	
-----------	---	--	--

## BACKREST

KRR030001	<input type="radio"/> <b>Standard backrest (aluminium, black)</b> Choose back height factory setting (mm). Height adjustments possible in the range 250-300; 300-400; 400-450 mm.	<table><tr><th>250 - 300</th><th>300 - 350</th><th>350 - 400</th><th>400 - 450</th></tr><tr><td><input type="radio"/> 250</td><td><input type="radio"/> 300</td><td><input type="radio"/> 350</td><td><input type="radio"/> 400</td></tr><tr><td><input type="radio"/> 275</td><td><input type="radio"/> 325</td><td><input type="radio"/> 375</td><td><input type="radio"/> 425</td></tr><tr><td><input type="radio"/> 300</td><td><input type="radio"/> 350</td><td><input type="radio"/> 400</td><td><input type="radio"/> 450</td></tr></table>	250 - 300	300 - 350	350 - 400	400 - 450	<input type="radio"/> 250	<input type="radio"/> 300	<input type="radio"/> 350	<input type="radio"/> 400	<input type="radio"/> 275	<input type="radio"/> 325	<input type="radio"/> 375	<input type="radio"/> 425	<input type="radio"/> 300	<input type="radio"/> 350	<input type="radio"/> 400	<input type="radio"/> 450	
250 - 300	300 - 350	350 - 400	400 - 450																
<input type="radio"/> 250	<input type="radio"/> 300	<input type="radio"/> 350	<input type="radio"/> 400																
<input type="radio"/> 275	<input type="radio"/> 325	<input type="radio"/> 375	<input type="radio"/> 425																
<input type="radio"/> 300	<input type="radio"/> 350	<input type="radio"/> 400	<input type="radio"/> 450																
KRR030006	<input type="checkbox"/> <b>Carbon backrest</b> - fixed height, crosstube very close to the upholstery, "Krypton" rubber grip (2) (L) Choose back height (mm) no height adjustment possible.	<table><tr><td><input type="radio"/> 250</td><td><input type="radio"/> 325</td><td><input type="radio"/> 400</td></tr><tr><td><input type="radio"/> 275</td><td><input type="radio"/> 350</td><td><input type="radio"/> 425</td></tr><tr><td><input type="radio"/> 300</td><td><input type="radio"/> 375</td><td><input type="radio"/> 450</td></tr></table>	<input type="radio"/> 250	<input type="radio"/> 325	<input type="radio"/> 400	<input type="radio"/> 275	<input type="radio"/> 350	<input type="radio"/> 425	<input type="radio"/> 300	<input type="radio"/> 375	<input type="radio"/> 450								
<input type="radio"/> 250	<input type="radio"/> 325	<input type="radio"/> 400																	
<input type="radio"/> 275	<input type="radio"/> 350	<input type="radio"/> 425																	
<input type="radio"/> 300	<input type="radio"/> 375	<input type="radio"/> 450																	
KRR030012	<input checked="" type="radio"/> Backrest, angle-adjustable (non foldable)	(-31° to +15°) (only in black anodizing)																	
KRR030015	<input type="radio"/> Backrest, angle-adjustable, fold-down	(-31° to +15°) (only in black anodizing)																	
KRR030102	<input type="checkbox"/> Backrest, angle-adjustable, fold-down, locked when folded, colour: black colour: <input type="checkbox"/> Orange <input type="checkbox"/> Silver <input type="checkbox"/> Red <input type="checkbox"/> Blue KRR030036 KRR030037 KRR030038 KRR030039	(-31° to +15°)																	

### Pushhandles: choose only one option

KRR030200	○	Omit push handles (L)	
KRR030201	○	Push handles long	
KRR030203	□	Fold-down push handles (from 325mm backrest-height)	
KRR030204	□	Height adj. push handles (+) (only with Standard backrest; from 325mm backrest height)	
KRR030205	□	Height adj. push handles for Jay backs (+) (only with Standard backrest; from 325mm backrest height)	

### Backrest upholstery

KRR030316	○	EXO Backrest sling, padded, adjustable, 1 accessory bag, black (EXO Evo version) Colour, binding tape: ● Black    ○ Orange    ○ Silver    ○ Red    ○ Blue	
KRR030317	□	EXO PRO Backrest, padded, adj., breathable spacer fabric, 1 accessory bag, black (EXO Evo version) Colour, binding tape: ● Black    ○ Orange    ○ Silver    ○ Red    ○ Blue	
KRR030005	□	EXO superlight, padded, adjustable, black (EXO Evo version) (L) Colour, binding tape: ● Black    ○ Orange    ○ Silver    ○ Red    ○ Blue	
KRR030300	○	Without backrest upholstery	

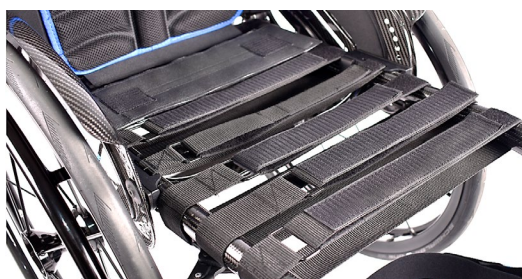
(1): Max. user weight 85 kg, only available up to seat-width 400 mm  
 (2): Not with height adj push handles, not with Jay J3 backs, not with positioning-belt  
 (L)= lightest option (+)= adds 500 g or more to the wheelchair-weight

For more information

[www.SunriseMedical.eu](http://www.SunriseMedical.eu)

© Sunrise Medical 2024

## SEAT UPHOLSTERIES AND CUSHIONS



KRR020012 Seat sling, airflow



KRR020019 Seat sling, airflow, superlight

## BACKREST



KRR030006  
Carbon Backrest



KRR030102  
Backrest, angle-adjustable, lock when folded



KRR030201  
Push handles long



KRR030203  
Push handles, fold-down



KRR030204  
Push handles, height-adjustable



KRR030316  
EXO backrest sling (EXO Evo version)

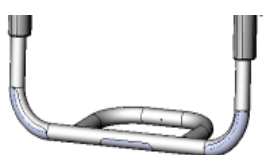


KRR030317  
EXO PRO backrest sling (EXO Evo version)



KRR030005  
EXO superlight backrest sling (EXO Evo version)

## FOOTREST AND FOOTPLATES



KRR050029  
Tubular footrest lightweight



KRR050025  
Platform footrest LW composite plate



KRR050026  
Platform footrest LW carbon plate



KRR050125  
Performance footrest alu angle adj



KRR050127  
Foot positioning plate

Krypton R

● = Standard      ○ = No cost option      □ = Cost option      Price in €

JAY 3 BACKS AND ACCESSORIES - only with Standard backrest (+)

JAY J3 Back - Shallow Contour

Mid Thoracic:	<input type="checkbox"/>	JAY030010	Medium - 340 mm	<input type="checkbox"/>	JAY030033	Tall - 380 mm				
Upper Thoracic:	<input type="checkbox"/>	JAY030012	Short - 420 mm	<input type="checkbox"/>	JAY030019	Medium - 460 mm	<input type="checkbox"/>	JAY030025	Tall - 500 mm	
Shoulder Height:	<input type="checkbox"/>	JAY030015	Short - 530 mm	<input type="checkbox"/>	JAY030022	Medium - 570 mm	<input type="checkbox"/>	JAY030028	Tall - 610 mm	

JAY J3 Back - Mid Contour

Mid Thoracic:	<input type="checkbox"/>	JAY030011	Medium - 340 mm	<input type="checkbox"/>	JAY030018	Tall - 380 mm				
Upper Thoracic:	<input type="checkbox"/>	JAY030013	Short - 420 mm	<input type="checkbox"/>	JAY030020	Medium - 460 mm	<input type="checkbox"/>	JAY030026	Tall - 500 mm	
Shoulder Height:	<input type="checkbox"/>	JAY030016	Short - 530 mm	<input type="checkbox"/>	JAY030023	Medium - 570 mm	<input type="checkbox"/>	JAY030029	Tall - 610 mm	

JAY J3 Carbon Back - Shallow Contour

Lower Thoracic:	<input type="checkbox"/> JAY060001	Short - 170 mm	<input type="checkbox"/> JAY060002	Tall - 240 mm	
Mid Thoracic:	<input type="checkbox"/> JAY060003	Short - 300 mm	<input type="checkbox"/> JAY060004	Tall - 380 mm	

Accessories for JAY J3 Backs

WHT030415	<input type="checkbox"/> Whitmyer Headrest, COBRA XTRA, flip back	(only with Jay 3 backs)	
WHT030416	<input type="checkbox"/> Whitmyer Headrest, AXYS, Standard	(only with Jay 3 backs)	
JAY090058	<input type="checkbox"/> JAY Accessory bag	(only with Jay 3 Carbon backs)	

SIDEGUARDS AND ARMRESTS

KRR040101	<input type="checkbox"/> Sideguard, carbon fibre, slim, black	(1)	(L)	
KRR040102	<input type="checkbox"/> Sideguard, aluminium, cold weather protection (colour: black, matt)			
KRR040103	<input type="checkbox"/> Sideguard, aluminium, fender, cold weather protection (colour: black, matt)	(min rear seat height 390 mm)		
KRR040104	<input type="checkbox"/> Sideguard, carbon fibre, fender, cold weather protection, black	(min rear seat height 390 mm)		
KRR040107	<input type="checkbox"/> Sideguard, composite, removable, 21 cm high (31 cm long), black			
KRR040052	<input type="checkbox"/> Single-post sideguard, armpad (330 mm), depth adjustable, height-adjustable, removable	(2) (+)		
KRR040117	<input type="checkbox"/> Tubular armrest, Alu, swing away (sideways), padded, removable	(+)		
KRR040000	<input type="radio"/> w/o Sideguard			

FOOTREST AND FOOTPLATES

KRR050029	● Footrest, tubular , lightweight, aluminium	(L)	
KRR050030	<input type="checkbox"/> Footrest, tubular, lightweight, aluminium, with cover		
KRR050025	<input type="checkbox"/> Platform footplate lightweight angle & depth adjustable composite		
KRR050024	<input type="checkbox"/> Platform footplate lightweight angle & depth adjustable aluminium (colour: black, matt)		
KRR050026	<input type="checkbox"/> Platform footplate lightweight angle & depth adjustable carbon		
KRR050125	<input type="checkbox"/> Performance footplate angle adjustable	(3)	
KRR050128	<input type="checkbox"/> Footboard, platform, plastic, angle and depth adjustable, flip-up (to the back)	(4)	
KRR050127	<input type="checkbox"/> Adjustable side protection, to create a side-stop on the footboard	(5)	

LOWER LEG LENGTH (LLL) Attention: LLL has to be 30 mm less than seat height front; all measurements in mm

- ☐ 360    ☐ 370    ☐ 380    ☐ 390    ☐ 400    ☐ 410    ☐ 420    ☐ 430
- ☐ 440    ☐ 450    ☐ 460    ☐ 470    ☐ 480    ☐ 490    ☐ 500    ☐ 510

FRAME VERSIONS

Frame length		
KRR010206	● Frame standard	
KRR010207	<input type="radio"/> Frame long (20 mm additional frame length)	(not in combination with SD 480 mm)
Frame angle		
KRR010012	● 100° frame	
KRR010013	<input type="checkbox"/> 92° Performance frame	
Frame inset		
KRR010101	● Inset: Small (10 mm)	
KRR010103	<input type="checkbox"/> Inset: Performance (30 mm)	(not available for seat width 320 mm)
Castor position (see explanation on next page)		
KRR010301	● Castor house position wide	
KRR010302	<input type="radio"/> Castor house position narrow (not with seat-depths < 400mm, please see recommendations on next page)	

- (1) With 24" rear wheel min. rear seat height 410 mm; with 25" rear wheel min. rear seat height 430 mm
- (2) Only with COG 56 mm
- (3) Not with SW 320 mm and 30 mm inset
- (4) User weight limitation 75 kg, not with 4" castor
- (5) Only for platform footplates lightweight angle & depth adjustable
- (L)= lightest option (+)= adds 500 g or more to the wheelchair-weight

For more information  
[www.SunriseMedical.eu](http://www.SunriseMedical.eu)  
© Sunrise Medical 2024



## SIDEGUARD & ARMREST



KRR040101 Slim style sideguard



KRR040104 Carbon fibre, cold weather protection, fender



KRR040107 Sideguard, composite, removable (black)



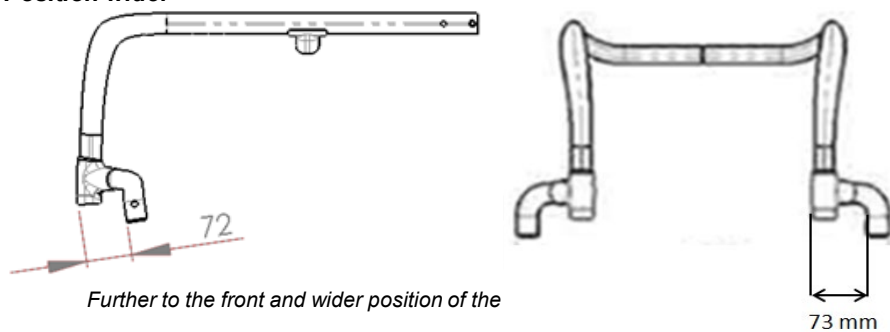
KRR040117 Tubular armrest, swing away, removable, padded



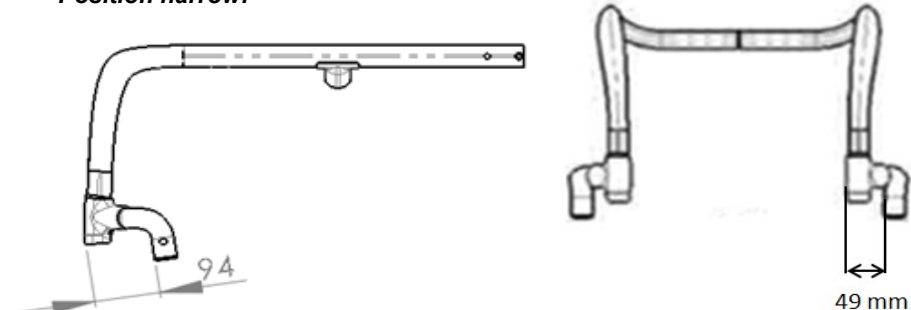
KRR040052 Single-post sideguard, armpad (33 cm)

## FRAME VERSIONS: CASTOR HOUSE POSITIONS

### Position wide:



### Position narrow:



22 mm further rearwards and 24 mm per side more narrow position of the casters for a more narrow front-end and improved manoeuvrability in tight spaces. Reduced front-stability compared to position wide, we recommend this option in combination with seat-height differences (front to rear) of 40mm or more or in combination with KRR010207 "frame, long".



KRR010301 Castor house position wide



KRR010302 Castor house position narrow



Castor house position wide vs. narrow



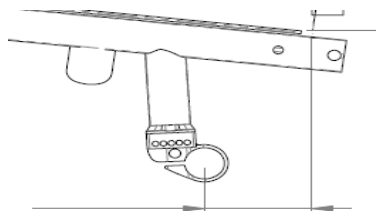
# Krypton R

● = Standard    ○ = No cost option    □ = Cost option

Price in €

## CENTRE OF GRAVITY (COG) - all measurements are in mm; measured from front of back post; choose only one option

COG56	○ 56 mm
COG68	○ 68 mm
COG80	○ 80 mm
COG92	○ 92 mm
COG104	○ 104 mm



## FRAME ACCESSORIES

KRR090031	□ Suspension up to 70 kg	(1) (+)	(chair will be built using aluminium axle-stems and axle-tube)	
KRR090032	□ Suspension up to 120 kg	(1) (+)	(chair will be built using aluminium axle-stems and axle-tube)	
<b>Tip assist (step tube) (2)</b>				
KRR090001	□ Left	KRR090002	□ Right	
KRR090003	□ Pair	(+)	(not available with anti-tip)	
KRR090009	□ Crutch holder		(only in combination with tip assist)	
<b>Anti-tip tubes swing-away (2)</b>				
KRR090004	□ Left	KRR090005	□ Right	
KRR090006	□ Pair	(+)	(not available with tip-assist)	
KRR090007	□ Quickie style anti-tip tubes pluggable	(2) (+)	(Pair)	
<b>Anti tip flip up (user operated) (2)</b>				
KRR090033	□ Left	KRR090008	□ Right	
KRR090010	□ Transit wheels	(2) (+)	(Please choose only one)	
KRF090016	□ Frame protection, black		(textile, with velcro)	
KRR090577	□ Frame protection, Plastic, glued to the frame, black			

## FORKS

(compare with your choice on the first page)

KRR080013	○ Castor fork, Carbotecture®, 111mm	Colour: Black (L)	
	Colour:	□ Silver    □ Orange    □ Red (3)    □ Blue (3)	
KRR080029	○ Castor fork, Aluminium, 123mm	Colour: Black	
	Colour:	□ Silver    □ Orange	
KRR080008	□ Castor fork, aluminium, one-arm	Colour: Black	(only with 4" & 5" Alu soft, Alu solid)
	Colour:	□ Silver    □ Orange    □ Red    □ Blue	
KRR080007	□ Castor fork, aluminium, suspension (Frog Legs®), black	(+)	

## CASTORS

(compare with your choice on the first page)

KRR080301	○ Castor, solid (hard), rim: composite, black	(3"-6", not with One arm fork)	
KRR080302	○ Castor, solid (soft), rim: composite, black	(only 5" and 6", not with One arm fork)	
KRR080303	□ Castor, solid (hard), light-up, rim: composite, black	(not available in 6", not with One arm fork, only 4" and 5")	
KRR080304	□ Castor, solid (hard), rim: aluminium	Colour, rim: Silver (only 4" and 5")	
KRR080306	□ Castor, solid (soft), rim: aluminium	Colour, rim: Silver (only 4" and 5")	
	Colour, rim:	□ Black    □ Orange    □ Red    □ Blue	

## REAR WHEELS

(compare with your choice on the first page; choose only one wheel type)

**NOTE: for users with higher user weight than 100 kg, we recommend cross spoked wheels**

KRR070000	○ Without rear wheel	
KRR070001	○ Rear wheel, Universal, 36 spokes (silver), cross-wise spokes	(+)
KRR070002	○ Rear wheel, Design, 36 spokes (silver), straight spokes	(only 24")
KRR070003	○ Rear wheel, Lightweight, 24 spokes (silver), straight spokes	(Std.: black hub/rim; colour options last page)
KRR070004	□ Rear wheel, Proton, 24 spokes (black), straight spokes	(L) · weight limit 100kg
KRR070005	□ Rear wheel, Spinergy, 18 spokes (black), straight spokes; hub: silver	
KRR070007	□ Rear wheel, Spinergy, 12 spokes (black), straight spokes, hub black	

(1): Not possible with carbon axle-stems and axle: chair will be built with aluminium axle-stems and axle-tube  
 (2): Not with KRR07049: camber adapter 0°, superlight.  
 (3): Red and blue only in combination with soft castor  
 (L)= lightest option (+)= adds 500 g or more to the wheelchair-weight

For more information  
[www.SunriseMedical.eu](http://www.SunriseMedical.eu)  
 © Sunrise Medical 2024

## FRAME ACCESSORIES



KRR090032  
Suspension



KRR090001  
Tip assist



KRR090004  
Anti-tip tubes SA



KRR090007  
Quickie style anti tip tubes pluggable



KRR090033  
Anti tip flip up (user operated)



KRR090010  
Transit Wheels



KRR090010  
Frame protection, Plastic, glued to the frame, black

## FORKS



KRR080013 & KRR080306  
Castor fork, Carbotecture & Castor solid (soft) aluminum



KRR080008  
Castor fork, aluminum, one-arm, red

## REAR WHEELS & HANDRIMS



KRR070001  
Universal wheel



KRR070002  
Design wheel



KRR070003  
Lightweight wheel



KRR070004  
Proton wheel



KRR070211  
Handrims Surge®



KRR070208  
Handrims Maxgrepp

## TYRES



KRR070101  
Schwalbe Right Run



KRR070107  
Schwalbe One



KRR070104  
Schwalbe Marathon Plus



KRR070102  
Tyre, puncture proof

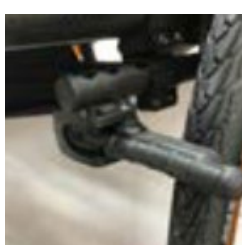
## WHEEL LOCKS



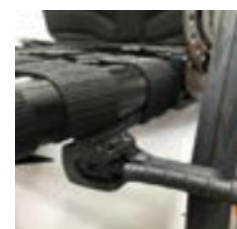
KRR060001  
Standard brake



KRR060002  
Knee lever brake



KRR060023  
Compact brake EVO



KRR060024  
Lightweight compact brake EVO

Krypton R									
<div><div><div><div><div><div></div></div></div><div><div></div></div><div><div></div></div></div><div><div>= Standard</div><div>= No cost option</div><div>= Cost option</div></div></div><div>Price in €</div></div>									
TYRES <div>(choose only one tyre type)</div>									
KRR070101	<div><div></div></div>	Tyre, pneumatic, fine profile, Schwalbe Right Run <div>(not in 25")</div>							
KRR070107	<div><div></div></div>	Tyre, pneumatic, slick, Schwalbe One <div>(L)</div>							
KRR070102	<div><div></div></div>	Tyre, puncture proof, tread <div>(+)</div>							
KRR070104	<div><div></div></div>	Tyre, pneumatic, puncture proof, tread, Schwalbe Marathon Plus Evolution <div>(+)</div>							
KRR090163	<div><div></div></div>	Spares-kit: 1 extra tyre (same as on the chair) and 1 extra inner tube <div>(not with solid tyres)</div>							
HANDRIMS									
KRR070201	<div><div></div></div>	Handrims, aluminium, powder-coated, clear <div>(L)</div>							
KRR070202	<div><div></div></div>	Handrims, aluminium, anodised, silver <div>(L)</div>							
KRR070203	<div><div></div></div>	Handrims, aluminium, powder-coated, coloured <div>(L)</div> <div>(select colour on last page)</div>							
KRR070204	<div><div></div></div>	Handrims, stainless steel, silver <div>(+)</div>							
KRR070205	<div><div></div></div>	Handrims, titanium, untreated							
KRR070206	<div><div></div></div>	Handrims, titanium, powder-coated, clear							
KRR070207	<div><div></div></div>	Handrims, Supergrip® <div>(+)</div>							
KRR070208	<div><div></div></div>	Handrims, Maxgrepp® <div>(+)</div> <div>(only 24")</div>							
KRR070212	<div><div></div></div>	Handrims, Ellipse 3R, black <div>(+)</div> <div>(ergonomic handrims with rubber-strip)</div>							
KRR070250	<div><div></div></div>	Handrim cover, rubber <div>(not with 25")</div>							
Hand rim mounting									
KRR070307	<div><div></div></div>	Handrim mount, super narrow (7 mm) <div>(only with stainless steel)</div>							
KRR070317	<div><div></div></div>	Handrim mount, narrow (17 mm)						Std.	
KRR070327	<div><div></div></div>	Handrim mount, wide (27 mm)							
WHEEL CAMBER <div>(choose only one option)</div>									
KRR070049	<div><div></div></div>	0° superlight, no width-adjustment <div>(1)</div> <div>(L)</div>							
KRR070600	<div><div></div></div>	0° width-adjustment +/-15mm							
KRR070603	<div><div></div></div>	3° width-adjustment +/-15mm							
SPOKE GUARDS (only available in 24") (+)									
KRR070831	<div><div></div></div>	Transparent							
KRR070823	<div><div></div></div>	Princess	KRR070813	<div><div></div></div>	Galactica	KRR070811	<div><div></div></div>	Jungle Fever	
KRR070816	<div><div></div></div>	Happy Lions	KRR070821	<div><div></div></div>	Pirates	KRR070810	<div><div></div></div>	Feather	
KRR070819	<div><div></div></div>	Monkeys	KRR070814	<div><div></div></div>	Graffiti	KRR070809	<div><div></div></div>	Chrome wheel	
KRR070820	<div><div></div></div>	Oriental	KRR070802	<div><div></div></div>	Basketball	KRR070800	<div><div></div></div>	Basketball 2	
KRR070829	<div><div></div></div>	Superhero	KRR070812	<div><div></div></div>	Flying water	KRR070821	<div><div></div></div>	Space	
KRR070817	<div><div></div></div>	Hot wheels	KRR070822	<div><div></div></div>	Pool	KRR070827	<div><div></div></div>	Silk	
KRR070830	<div><div></div></div>	Tiger	KRR070833	<div><div></div></div>	Zebra				
WHEEL LOCKS (Choose only one option)									
KRR060001	<div><div></div></div>	Standard wheel lock							
KRR060002	<div><div></div></div>	Knee lever wheel lock							
KRR060010	<div><div></div></div>	Extension for knee lever wheel lock, slip-on, swing-away <div>(only with KRR060002)</div>							
KRR060023	<div><div></div></div>	Compact brake EVO							
KRR060024	<div><div></div></div>	Lightweight compact brake EVO <div>(2)</div> <div>(L)</div>							
KRR060006	<div><div></div></div>	One arm wheel lock (left hand actuation) <div>(+)</div>							
KRR060007	<div><div></div></div>	One arm wheel lock (right hand actuation) <div>(+)</div>							
ACCESSORIES									
KRR090000	<div><div></div></div>	Tool kit							
KRR090024	<div><div></div></div>	High pressure pump							
KRR090025	<div><div></div></div>	Air pump							
KRR090026	<div><div></div></div>	Mobile phone pocket							
KRR090030	<div><div></div></div>	Back pack							
(1): (2):								For more information <a href="http://www.SunriseMedical.com">www.SunriseMedical.com</a> © Sunrise Medical 2024	
Camber adapter glued into the axle-tube. No adjustment of the track-width possible. Adjustment of COG ± 2 cm on a chair in the field. (L)= lightest option (+)= adds 500 g or more to the wheelchair-weight									

# Krypton R

● = Standard      ○ = No cost option      □ = Cost option

## COLOURS FOR HANDRIMS AND HUB/ RIM OF THE STANDARD WHEEL

Handrim (2) Hub/rim (1)		Handrim (2) Hub/rim (1)	
02 Brilliant Silver	<input type="checkbox"/>	27 Graphitemetallic	<input type="checkbox"/>
03 Silver Matt	<input type="checkbox"/>	29 Black	<input type="checkbox"/>
06 Sun Yellow	<input type="checkbox"/>	31 Matt Black	<input type="checkbox"/>
14 Blue	<input type="checkbox"/>	32 Signal White	<input type="checkbox"/>
15 Brilliant Marine	<input type="checkbox"/>	33 Pink	<input type="checkbox"/>
16 Matt Marine	<input type="checkbox"/>	34 Dark Chocolate Metallic	<input type="checkbox"/>
19 Brilliant Purple	<input type="checkbox"/>	35 Skyblue	<input type="checkbox"/>
21 Red Ruby	<input type="checkbox"/>	36 Cyan-Metallic	<input type="checkbox"/>
22 Brilliant Red	<input type="checkbox"/>	37 Marsred (Orange)	<input type="checkbox"/>
23 Matt Red	<input type="checkbox"/>	40 Kiwi	<input type="checkbox"/>
24 Tutti Frutti Orange	<input type="checkbox"/>	41 Flamingo-Glitter	<input type="checkbox"/>
		42 Matt-Anthracite	<input type="checkbox"/>
		46 Mamba Green (new)	

(1) Only with universal cross spoked rear wheels

(2) only with KRR070203, handrim aluminium, powder coated

## FRAME-COLOURS

KRR100139	<input type="checkbox"/>	Natural Carbon, no coating	Std.
KRR100137	<input type="checkbox"/>	Transparent, gloss	
KRR100138	<input type="checkbox"/>	Transparent, matt	
KRR100122	<input type="checkbox"/>	Black (gloss)	
KRR100123	<input type="checkbox"/>	Matte black	

## FRAME-GRAPHICS "Flying Pixel" (scratch resistant, non-removeable, includes the "Krypton" sticker)

KRR100590	<input type="checkbox"/>	Frame graphics Flying Pixel, silver	
KRR100591	<input type="checkbox"/>	Frame graphics Flying Pixel, red	
KRR100592	<input type="checkbox"/>	Frame graphics Flying Pixel, blue	

## COLOUR STICKERS "SOPUR"/ "QUICKIE" and "Krypton" (3)

KRR100550	<input type="checkbox"/>	black	
KRR100551	<input type="checkbox"/>	silver	
KRR100552	<input type="checkbox"/>	orange	
KRR100553	<input type="checkbox"/>	red	
KRR100554	<input type="checkbox"/>	blue	

## COLOURS FOR LIGHTWEIGHT WHEELS 24" (4)

KRR100336	<input type="checkbox"/>	Rear wheel, lightweight anodized, orange (4)	
KRR100337	<input type="checkbox"/>	Rear wheel, lightweight anodized, blue (4)	
KRR100338	<input type="checkbox"/>	Rear wheel, lightweight anodized, red (4)	

(3) No choice possible when frame graphics "Flying Pixel" are chosen.

(4) Anodised colours for hub and rim, black spokes. Only with light weight wheel in 24"

## Comments for special build:



## Krypton R - Base Price

Option price

Packaging and transport

Exclusive VAT

VAT.

## Total Price

Sunrise Medical Customer Service

Address:

Tel.

Fax.

E-mail:

E-commerce:

Website:

For more information

[www.SunriseMedical.com](http://www.SunriseMedical.com)

© Sunrise Medical 2024



## FRAME COLOURS



1. *Transparent, gloss*
2. *Transparent, matt*
3. *Black, gloss*
4. *Black, matt*

## FRAME GRAPHIC "FLYING PIXELS"



**From left to right:**

- *Frame graphics Flying Pixel, red*
- *Frame graphics Flying Pixel, silver*
- *Frame graphics Flying Pixel, blue*

## 24 " LIGHT WEIGHT WHEEL COLOURS



*KRR100336  
Lightweight wheel, anodized orange*



*KRR100337  
Lightweight wheel, anodized blue*



*KRR100338  
Lightweight wheel, anodized red*