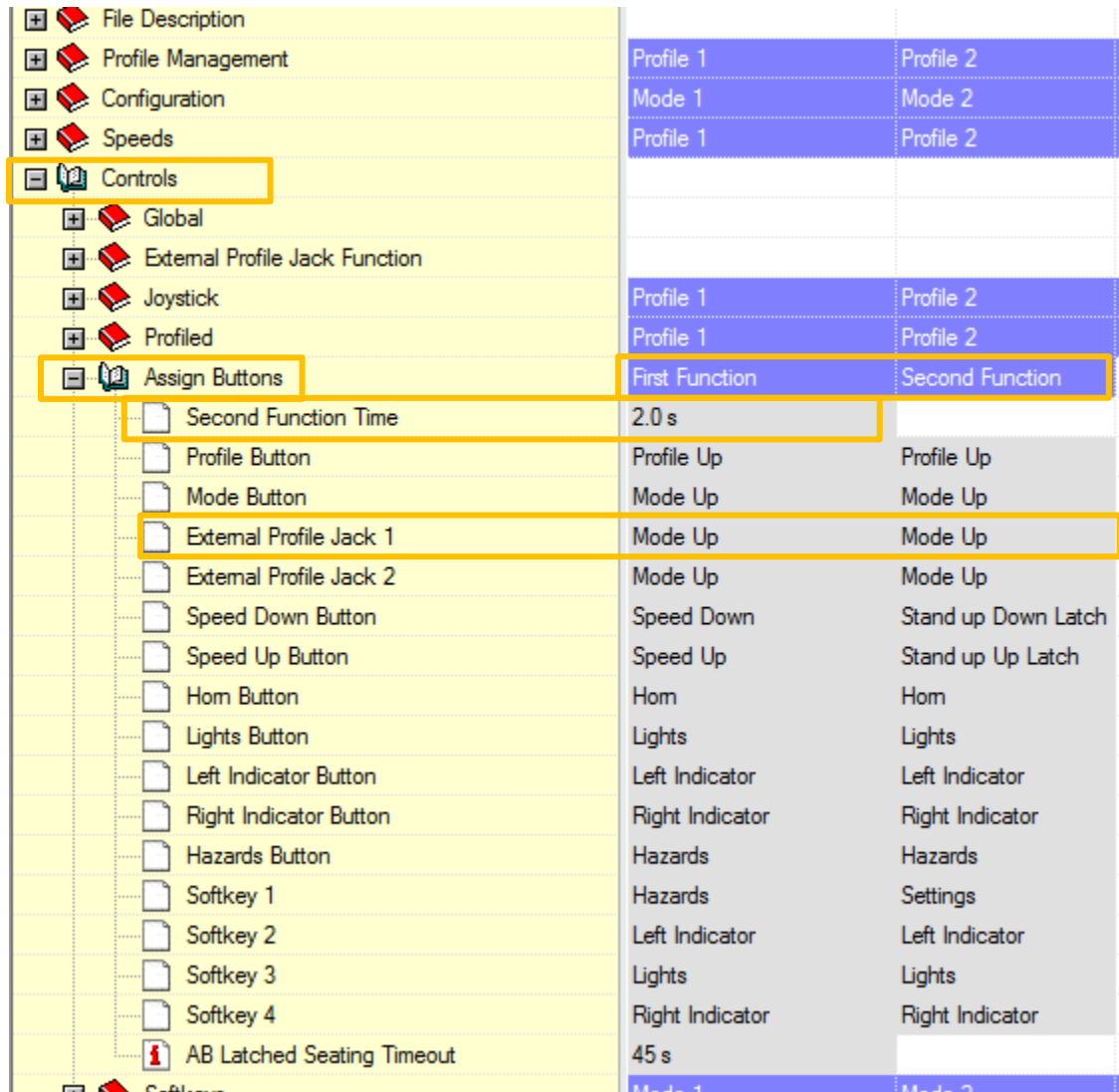


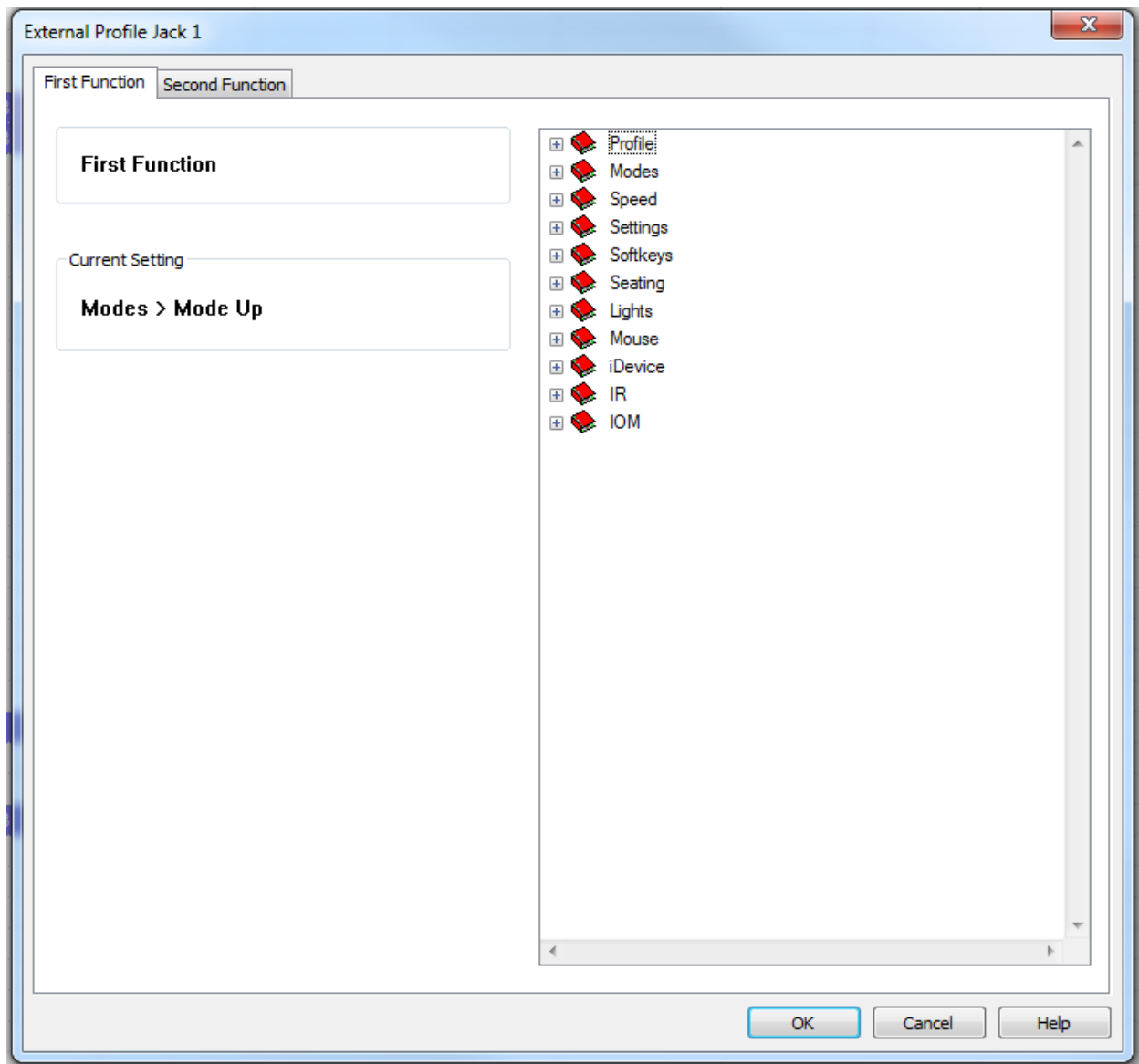
How to assign functions to Buddy Button plugged into the Mode Jack socket on an LCD R-Net Joystick.

- 1 – Open up your PC programmer and connect to the chair using an R-Net Dongle.
- 2 – Open up the CONTROLS parameter, and then go into ASSIGN BUTTONS.

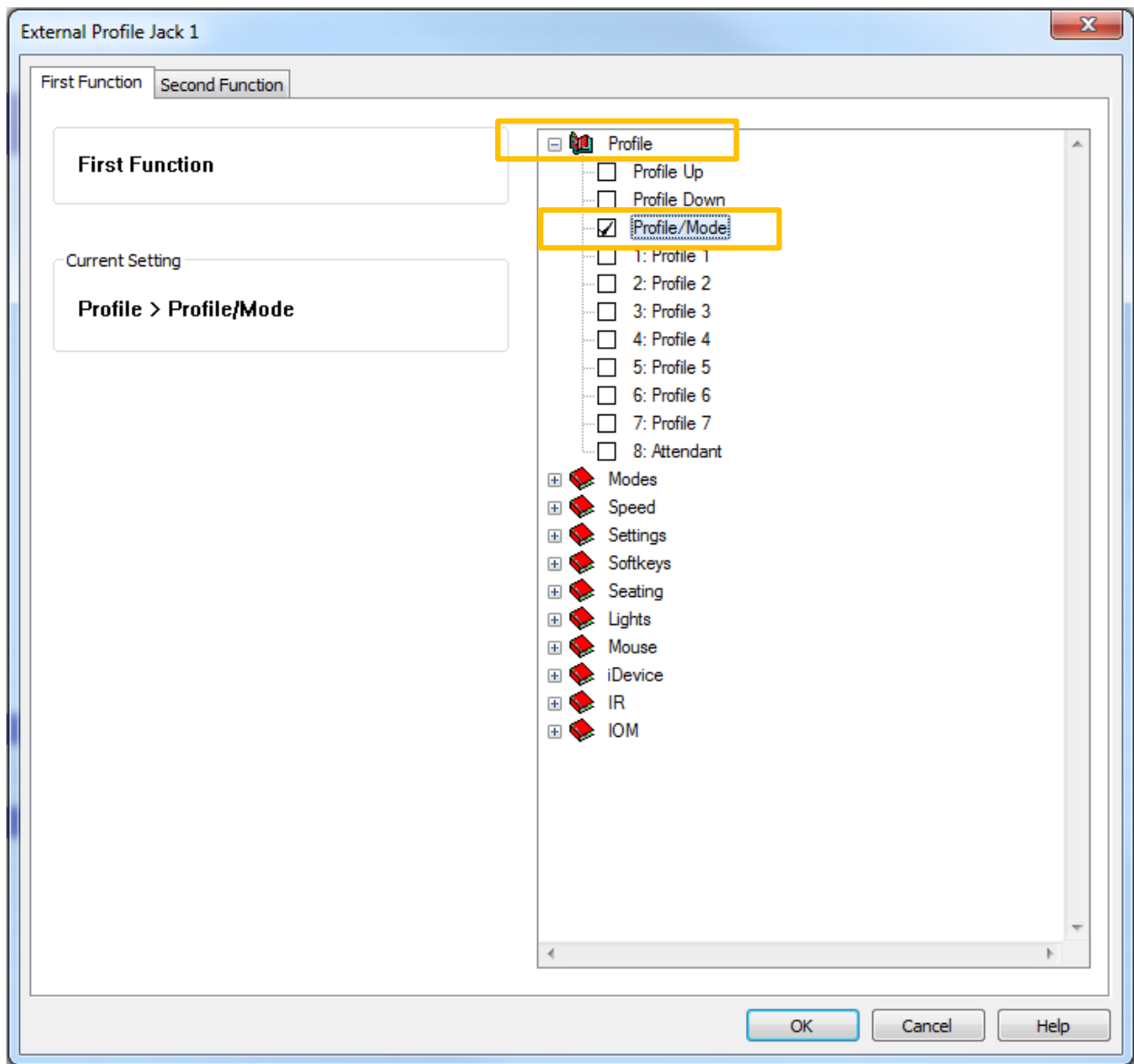


- 3 – You then need to look under EXTERNAL PROFILE JACK 1. You will see that you have two options here to change. FIRST FUNCTION AND SECOND FUNCTION. You will also see that you can define the time required for the button to be held in order for the second function to operate.

4 – Double click on EXTERNAL PROFILE JACK 1 UNDER FIRST FUNCTION. When you do this you will see the window shown below. You can now use the options on the right hand side to select exactly what function you want the buddy button to activate.



5 – If you want the button to scroll through the profiles and then access modes open the parameters shown below. (See next page)



6 – With this option selected the buddy button will scroll through the profiles and then access mode after all the profiles have been scrolled through. The parameters will now show in the main programming screen once you click OK. (See next page)

Controls		
Global		
External Profile Jack Function		
Joystick		
Profiled		
Assign Buttons	Profile 1	Profile 2
Second Function Time	Profile 1	Profile 2
Profile Button	First Function	Second Function
Mode Button	2.0 s	
External Profile Jack 1	Profile Up	Profile Up
External Profile Jack 2	Mode Up	Mode Up
Speed Down Button	Profile/Mode	Mode Up
	Mode Up	Mode Up
	Speed Down	Stand up Down Latch

7 – I would also suggest turning off all modes apart from DRIVE in all profiles apart from Profile 1. This will reduce any extra clicks of the buddy button. If you don't do this the client will have to push the button 5 times when in seating mode before returning back to Profile 1.

8 – To do this, go to the PROFILE MANAGEMENT parameter, click on MODE ENABLE in PROFILE 2 and deselect all modes apart from drive. Repeat this in PROFILES 3 TO PROFILE 5 (or however many profiles you have enabled)

File Description	Profile 1	Profile 2	Profile 3	Profile 4	Profile 5	Profile 6
Profile Management	Profile 1	Profile 2	Profile 3	Profile 4	Profile 5	Profile 6
Profile Name	Yes	Yes	Yes	Yes	Yes	No
Profile Enable	[12345678]	Drive	[12345678]	[12345678]	[12345678]	[12345678]
Mode Enable	Universal	Seating	Universal	Universal	Universal	Universal
Input Device Type	All	Mouse 1	All	All	All	All
Input Device Subtype	No	Mouse 2	No	No	No	No
Seat Reversal Profile	Yes	Device	Yes	Yes	Yes	Yes
Allow Grab	Mode 1	IR Control	Mode 3	Mode 4	Mode 5	Mode 6
Configuration	Profile 1	Programming	Profile 3	Profile 4	Profile 5	Profile 6
Speeds						

9 – The Programming screen should now look like this before you click to program the chair.

Profile Management	Profile 1	Profile 2	Profile 3	Profile 4	Profile 5	Profile 6
Profile Name	Profile 1	Profile 2	Profile 3	Profile 4	Profile 5	Profile 6
Profile Enable	Yes	Yes	Yes	Yes	Yes	No
Mode Enable	[12345678]	[1]	[1]	[1]	[1]	[1]
Input Device Type	Universal	Universal	Universal	Universal	Universal	Universal
Input Device Subtype	All	All	All	All	All	All
Seat Reversal Profile	No	No	No	No	No	No
Allow Grab	Yes	Yes	Yes	Yes	Yes	Yes
Configuration	Mode 1	Mode 2	Mode 3	Mode 4	Mode 5	Mode 6

10 – If you want to assign a second function (long Press) to the buddy button then repeat the same process by clicking on EXTERNAL PROFILE JACK 1 but under the SECOND FUNCTION. See below. Follow the same process to decide what function you want to assign to a long press. Have a look through the menu to see what function you wish to assign. You will see you can assign nearly any function you want.

Controls

Global

External Profile Jack Function

Joystick

Profiled

Assign Buttons

Second Function Time

Profile Button

Mode Button

External Profile Jack 1

External Profile Jack 2

Speed Down Button

Speed Up Button

Hom Button

Lights Button

Profile 1	Profile 2	Profile 2
Profile 1	Profile 2	Profile 2
First Function	Second Function	
2.0 s		
Profile Up	Profile Up	
Mode Up	Mode Up	
Profile/Mode	Mode Up	
Mode Up	Mode Up	
Speed Down	Stand up Down Latch	
Speed Up	Stand up Up Latch	
Hom	Hom	
Lights	Lights	