

	Technical / News Bulletin UK	BULLETIN NO.:
		TB UK163
		DATE ISSUED
		14/06/2021

BULLETIN DETAILS

Product Group:	ZIPPIE	
Model Affected:	M2 and M2 Mini	
Effective Date: See Below	Serial No. Effective From:	N/A
Bulletin Subject:	Zippie Salsa M2 and M2 Mini Kids Manual ELR's – Temporary Halt	

Due to a discontinuation of parts from our supplier, with immediate effect, we have implemented a temporary halt on the production of Zippie Salsa manual elevating legrests.

The tool required to manufacture these parts has been discontinued, resulting in a replacement needing to be sourced.

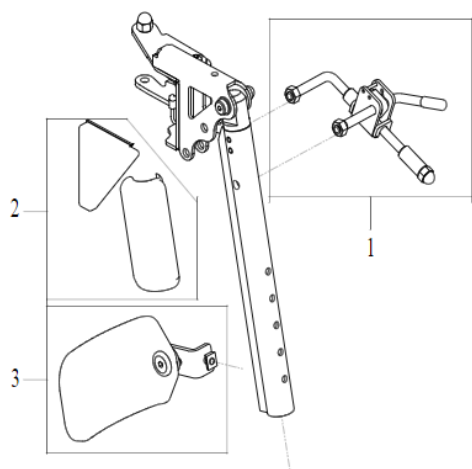
We are working to resolve this and source a new part to continue the production of the ELR's.

We apologise for the inconvenience this may cause.

Spare part numbers affected:

035124-001 – ELR kids assembly RH

035124-002 – ELR kids assembly LH



Order form options affected:

ZMM050016/ZIP050016 – Elevating legrest & flip up footplates

We will further communicate when we are able to again begin manufacturing of the Zippie Salsa ELR's

Customer Services	Customer Support	Technical Service Centre	E-mail
Telephone:	+44 (0)845 605 66 88 Option 1-1	+44 (0)845 605 66 88 Option 1-2	enquiries@sunmed.co.uk
Fax:	+44 (0)845 605 66 89	+44 (0)845 605 66 89	help.technical@sunmed.co.uk