

# EMPULSE F55

Sales presentation

---

# EMPULSE F55 SUMMARY

Pull-devices have become a trend throughout Europe. Apart from extending the user's range (and thus his mobility) those devices will as well preserve the user's upper extremities (esp. shoulders) and prevent pain and damage. Last but not least it's fun to use pulling-devices!!

We differentiate between two kinds of pulling devices:

- **Type A:** Small, versatile, very maneuverable and transportable devices. In- and outdoor usage.
- **Type B:** Larger, more stable and comfortable devices. More offroad-oriented and not transportable/ difficult to transport. Outdoor-use only.

With the Attitude Power, Sunrise Medical already has a "Type B"-device in place. The F55 will complete the pulling-device portfolio with a "Type A" device. The Attitude Power will not be discontinued.



# EMPULSE F55

## CUSTOMER'S CHOICE: 4 VERSIONS



### F55 8,5" FF-Version

For fixed-front chairs

- + smaller pack-size
- + easy to transport
- + very maneuverable, turns „on a dime“
- less stability at high speeds



### F55 14" FF-Version

For fixed-front chairs

- + More stability at high speed
- + Better Ride-comfort
- + Improved offroad-capability
- larger turning-circle
- larger pack-size



### F55 8,5" and 14" SA-versions

For swing-away chairs

- + longer sub-frame to suit SA-frames
- + swan-necked steering tube to improve the user's seating-position

# EMPULSE F55 DOCKING-CLAMPS

## Docking-clamps for the wheelchair-frame

Very versatile, patented system with only 5 clamps to fit Sopur/ Quickie and competitor's chairs:



### Universal clamps:

- Round-tube frames (incl. spacers to fit most frame-tubes)
- Sopur/ Quickie oval-tube frames (Helium, Xenon, Nitrum)

### Specific clamps:

- Progeo (oval-tube frames)
- Ki Mobility Rogue (oversized frame-tube)

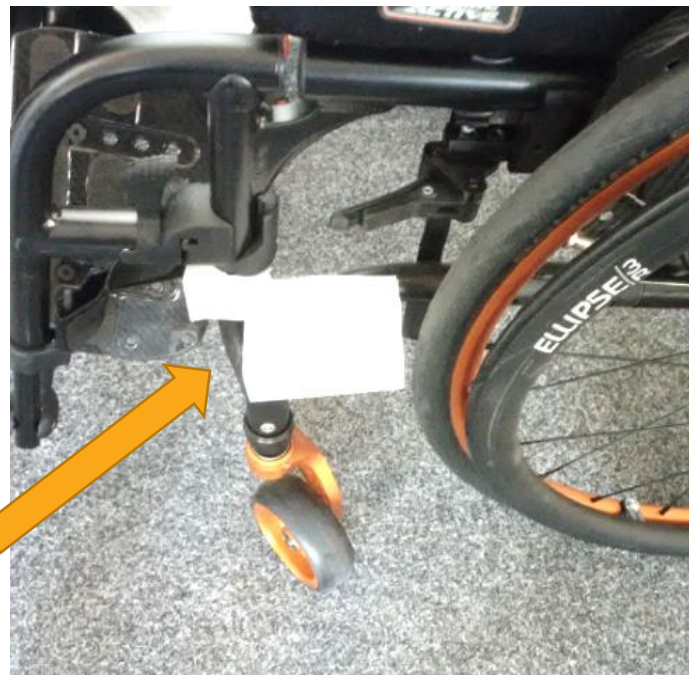
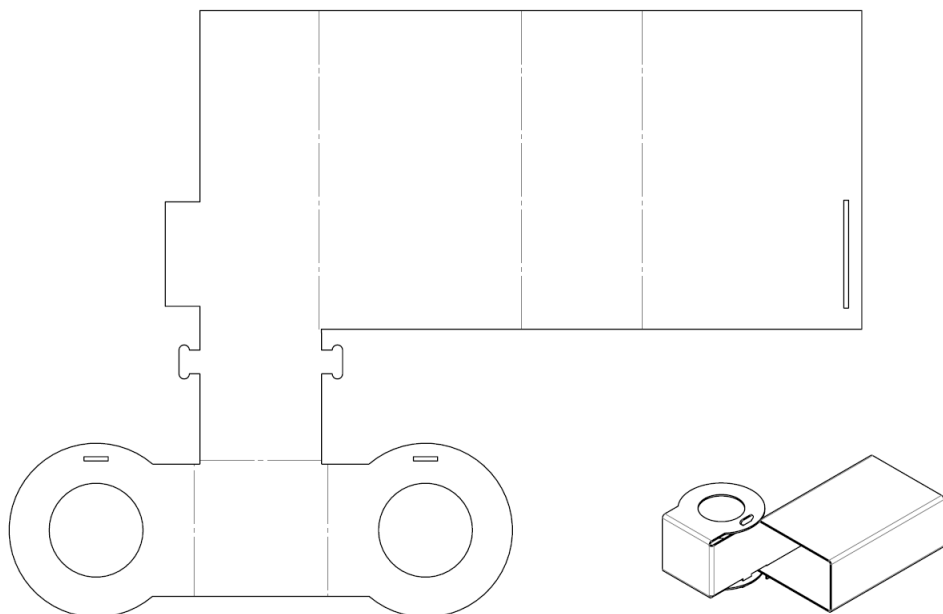
- List of combination agreements for competitor chairs can always be found online
- NoGos for Quickie chairs are maintained on every chair's OF
- NoGos can appear on competitor's chairs! Use paper-model to verify fit of the clamps for any wheelchair
- [Movie: Empulse F55 - Docking & adjustment - YouTube](#)

# EMPULSE F55

## DOCKING-CLAMPS/ PAPER MODEL

### Paper-model of the docking clamps

Can be downloaded (link on the product-page) and folded to verify whether the clamp collides with rear-wheels, wheel-locks or frame parts on a specific chair



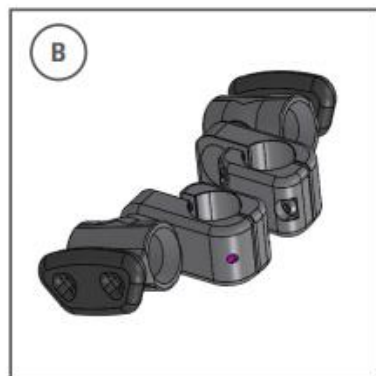
# EMPULSE F55

## DOCKING-CLAMPS/ PAPER MODEL



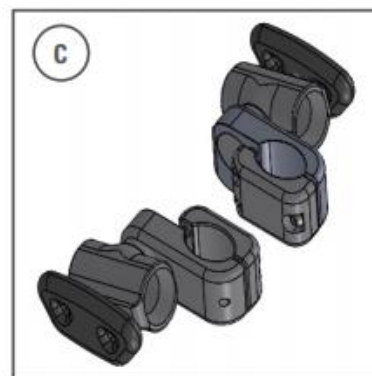
**Version A**

Suitable for round tube with 19.5 mm, 23 mm, 25 mm, 28.6 mm & 30 mm diameters. Adaptable through inserts included in delivery.



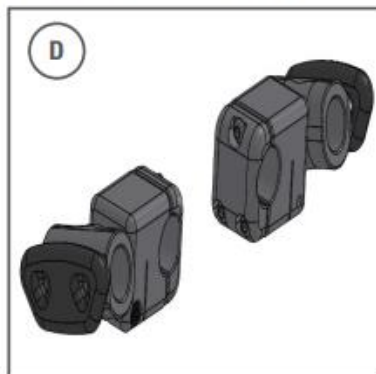
**Version B**

Oval tube for Xenon<sup>2</sup>, Xenon<sup>2</sup> Hybrid & Helium.



**Version C**

For Progeo oval tube frame (not in combination with V frame).



**Version D**

Suitable for Xenon<sup>2</sup> SA.



**Version E**

35.5 mm, suitable for KI-Mobility Rogue and Tsunami.



# EMPULSE F55

## TECHNICAL DATA



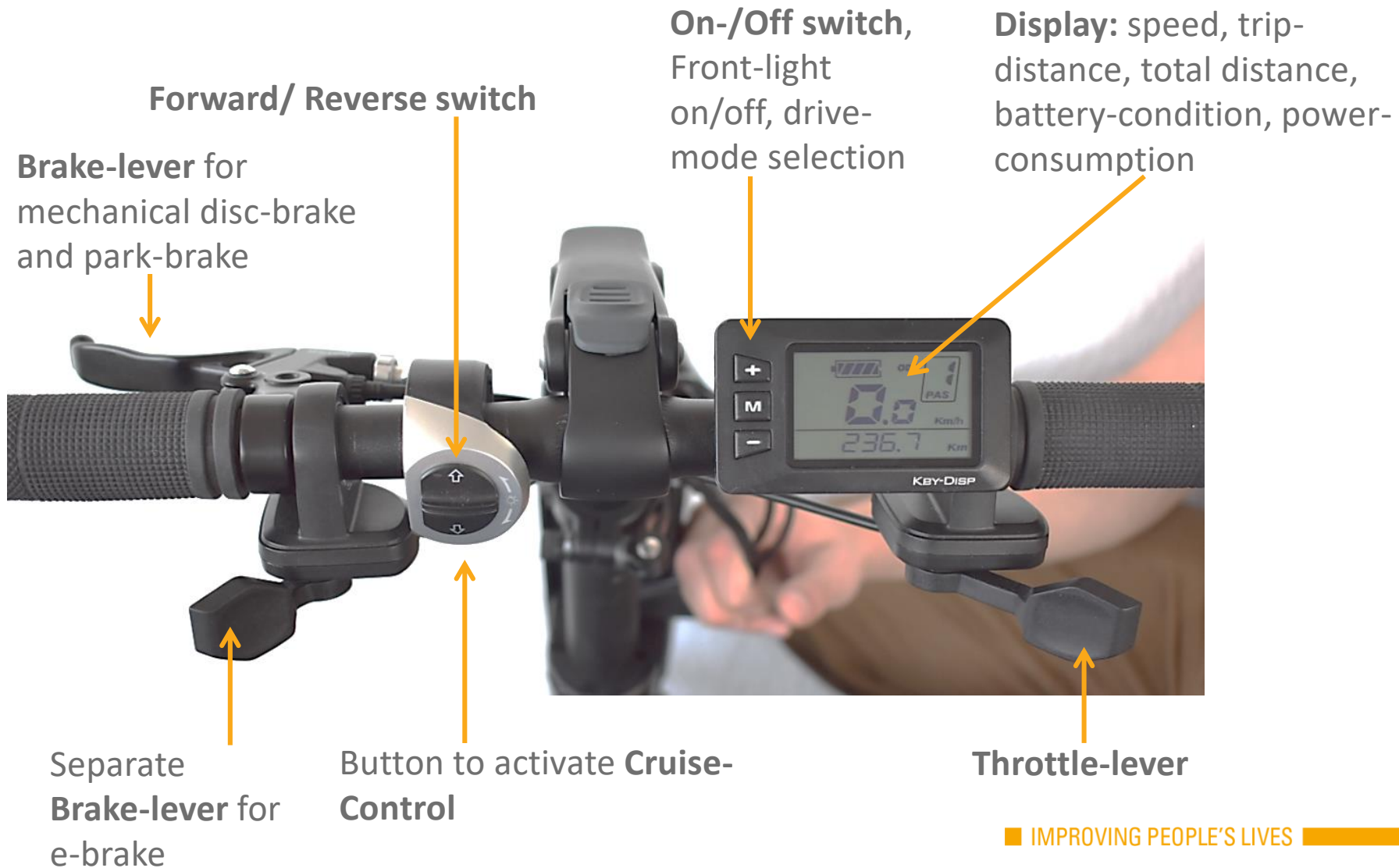
- Brushless **electric motor** with air-chambered solid-tyre (8,5“) or pneumatic tyre (14“)
- **Forwards** and **reverse** gear
- 6 /10/15 kph **max speed**
- **Cruise-control** button (deactivated by brake-lever)
- **Twin-brake system**: mechanical disc-brake (incl. park-brake) and separate electronic brake
- **Li-Ion Battery** with intelligent Battery-Management-System and Balanced-Charging to improve charging-cycles
- Custom programmed and tuned 15Amp Controller
- 36 V-System, 8,1 Ah, 292Wh => **Range** up to 25km
- **Front LED-light** without upcharge
- **Colours**: Fender and battery-rails in 4 colours included in delivery without upcharge



- **Tests and Certifications** according to EN 12184, IEC 62133-2 , (TUEV-certified)
- **IATA-certificate** with all relevant information for the battery to make transport on passenger airplanes possible (always contact your airline before you travel!)



# EMPULSE F55 DRIVING





# EMPULSE F55

## PACK SIZE



- The sub-frame can be **flipped up** to decrease pack-size. It will lock in the upper position and enables the user to push the F55 i.e. in a car's trunk
- The sub-frame can be **fully detached** from the F55, using a quick-release-pin
- Use the **parking-brake** to make handling the device easier
- **Weight** of the Device is "9+2+2"kg: **9kg** with sub-frame (2kg) and battery (2kg) removed



# EMPULSE F55

## ORDERING & OPTIONS

### Ordering process

- The Empulse F55 will be **distributed by the EDC** and drop-shipped to dealers
- **4 days OTS + 2 days shipping in EU**
- **Bundling:** can be bundled with manual chairs on the OF
- F55 will be added to the Nitrum **Visualizer**

### Options:

- Kickstand for ease of docking
- Additional battery
- Additional charger
- Cable lock
- Additional Front- and rear-lights



# EMPULSE F55

## DELIVERY & ADAPTION TO THE CHAIR



### What's in the box?

- Everything you need to adapt the F55 to all types of wheelchairs with front-frame-widths from 260 -480mm. No cutting down or modification of parts necessary.
- The specifically programmed Display (wheel-size/ speed)
- 1 set of docking clamps (angle-adjustable to cover most seat-heights)
- 4 colour-kits (Fender and Battery-Rails – black is mounted as default)
- Li-Ion Battery
- Charger with country-specific plug (CE/ UK/ CH-IT)
- Quick-start guide: QR-code leads to quick-start tutorials

### How to adapt the F55

- The dealer will have to adapt the F55 to the chair
- QR-code: link to video-tutorials on adaption
- OM: extensive description of adaption
- Adaption will take from 25mins to 1,5 hrs (first time)



[Link](#)

# EMPULSE F55 SUMMARY



## DEALER

- 6 Days lead-time (as well for spares), full Sunrise Medical service
- Easy adaption: can be adapted and adjusted to many chairs (Rigid/Folding/FF/SA) and mostly all frame widths/ heights / angles. All parts necessary are included, no cutting and drilling required
- Combination agreements and TUEV certification minimize the risk for the dealer

## USER

- Effective choice of wheel-sizes depending on the user's preferences (superb maneuverability and transport vs. improved ride-comfort and traction)
- Full adjustability for optimized performance (traction and maneuverability)
- Easy docking with automatic locking
- On-the-fly adjustment for the handlebar-position
- Folding subframe to minimize the pack-size
- Forward and reverse, fully redundant Twin brake-system
- Cruise control
- LED light and 4 colour-kits included
- TUEV-certified quality and safety
- High-quality battery with intelligent charging management ensures long battery lifetime
- IATA certificate for the battery simplifies travelling with the battery