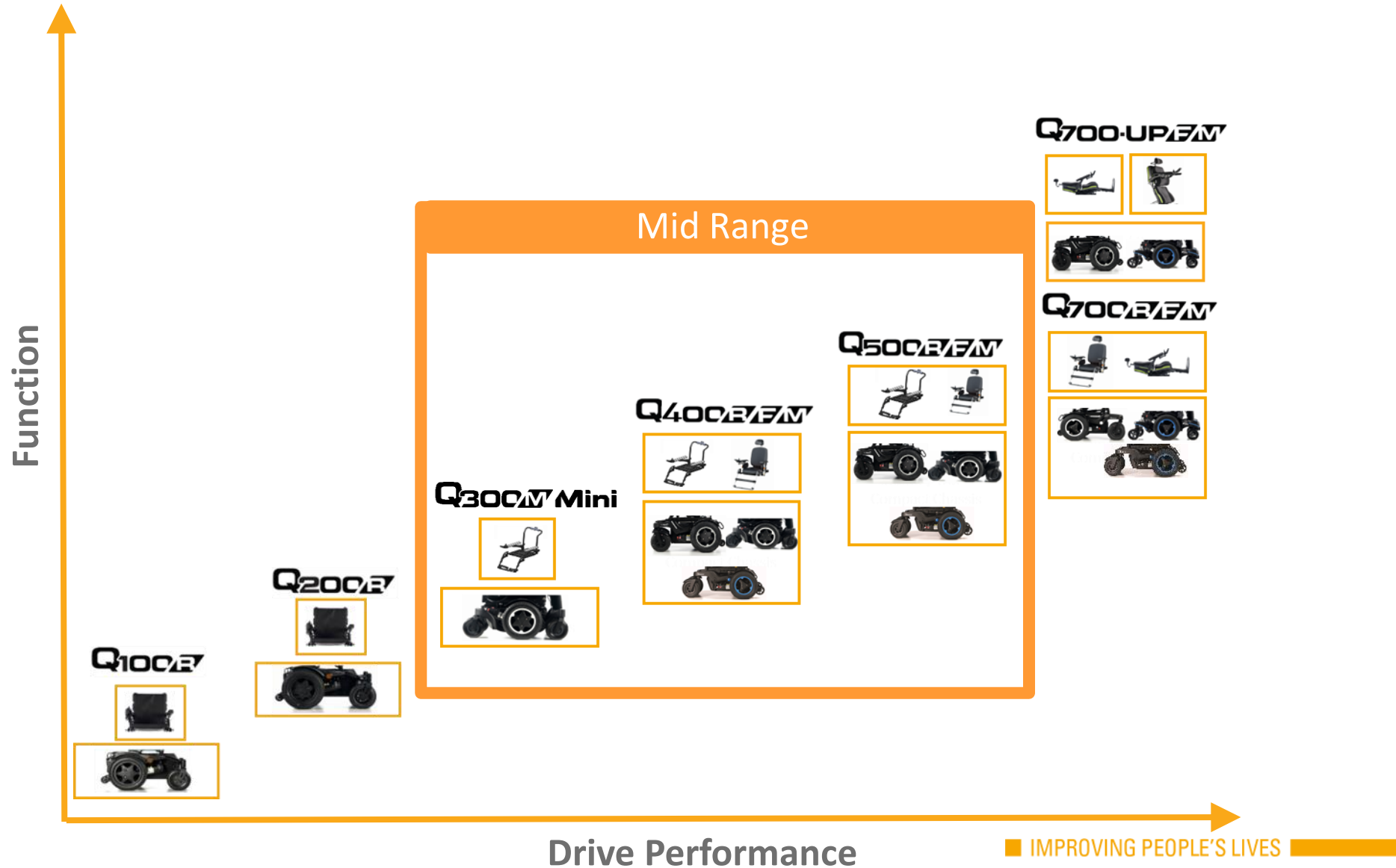




Q300 M Mini

*COMPACT IN SIZE
BIG IN PERFORMANCE*

Design Concept



Design Concept



THE Q-SERIES OFFERS...



- ✓ Exceptional Performance
- ✓ Market Leading SEDEO Seating
- ✓ Advanced Control Systems
 - R-Net
 - Switch-IT SID's
 - Link-It
- ✓ Q-Series modularity

Key Features



USP:

- **SEDEO PRO Flexi backrest cushion on SEDEO Lite seat** - accommodates more complex clinical postures

KSF:

- **Modularity** – cross compatibility of seat and base components (SEDEO Lite seat, motors, wheels) across the Q-Series platform for easier ordering & fleet maintenance
- **Bigger batteries (56Ah)** – range improvement and greater use of powered seat functionality
- **SEDEO LITE seat** - modular, easy to adjust and quickly adaptable to changing mild-moderate user needs
- **New Power Centre Mount footrest** – slimmer design of existing PCMF from Q500-700 Series with both extension and articulation movements
- **Greater style options** – wider range of coloured shrouds and colour accents

Technical Features – Base



Feature

- ✓ **Modularity** – utilizes Q-Series core components from Q100, 200 R & Q400, 500 & 700 M bases

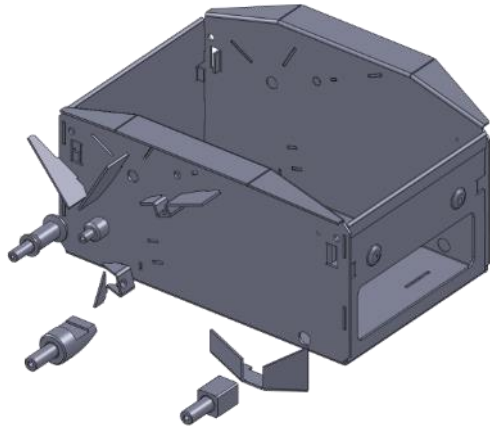
- Drive wheels
- Motors
- Electronic control systems
- SEDEO LITE seat

Benefit

- Dealer - Easier to service and maintain
 - Enables true fleet maintenance
- User - Shorter maintenance visits



Technical Features – Base



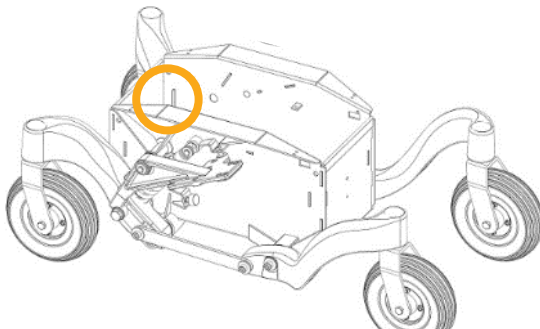
Feature

- ✓ Utilizes proven Salsa M2 Mini components
 - Chassis
 - one minor change to front seat post receivers – to fit larger batteries
 - Castors - change grey to black tyres

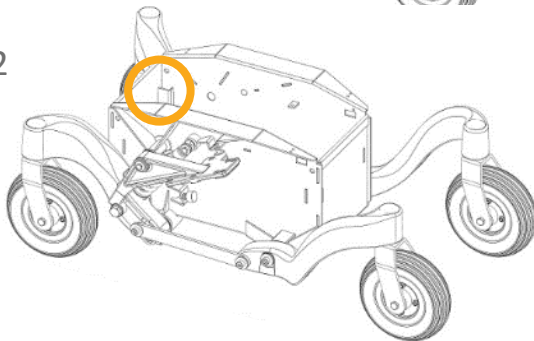
Benefit

- Continue Q-Series aesthetics
- Dealer - Easier to service and maintain
 - Enables true fleet maintenance
- User
 - Retains suspension performance and quality
 - Shorter maintenance visits
 - Matches Q-Series aesthetics

Q300M
Mini



Salsa M2
Mini



HOW CAN WE FIT LARGER BATTERIES?

Redesigned Seat Post Receiver to allow larger batteries



Salsa M2 Mini



Q300 M Mini

Technical Features – Base



Feature

✓ 41 or 56 Ah HAZE AGM batteries

- 41Ah Batteries – 25km Range (15.5 miles)
- 56Ah Batteries – 36km Range (22.5 miles)

35% Larger Batteries Vs. Salsa M2 Mini

✓ Same STFH options

- 410/430/450/470/490mm

✓ Max user weight 136kg

Benefit

- Accommodates broader range of power chair users needs
 - Greater distance/ range
 - Frequent seat position changes
 - Specific Heights - transfers, table & vehicle access

Technical Features – Base



Feature



- ✓ **12, 13 or 14" Drive wheels**
 - 6 spoke, split rim
 - 12" Solid - Knobby tyres
 - 13" Pneumatic or solid - Knobby tyres
 - **14" Pneumatic or solid - Knobby tyres**
- ✓ **7" front and rear castors** – solid tyres
 - Same castors as M2 Mini but in black

Benefit

- Dealer - Easier to maintain & service
- Dealer & User - Better match user need – balances indoor manoeuvrability with greater outdoor performance

Technical Features – Base



Feature

- ✓ 2 or 4-pole motors – same as Q400/500/700 M
 - 2-pole Standard 6kph (4 mph, 200W)
 - 2-pole Performance
 - 6 kph (300W)
 - 10 kph (6.5mph, 350W)
 - 4-pole
 - 6kph (500W)
 - 8 kph (5mph, 500W)
- ✓ VR2 or R-Net control systems
 - 70/ 90A VR2
 - 90/120A R-Net

Benefit

- Dealer - Easier to maintain & service
- Dealer/ User - Better match to user need – indoor manoeuvrability or greater outdoor performance
 - ✓ Faster
 - ✓ Greater power for obstacle climbing
 - ✓ Greater control over powerchair

Technical Features – Base



Width 520mm

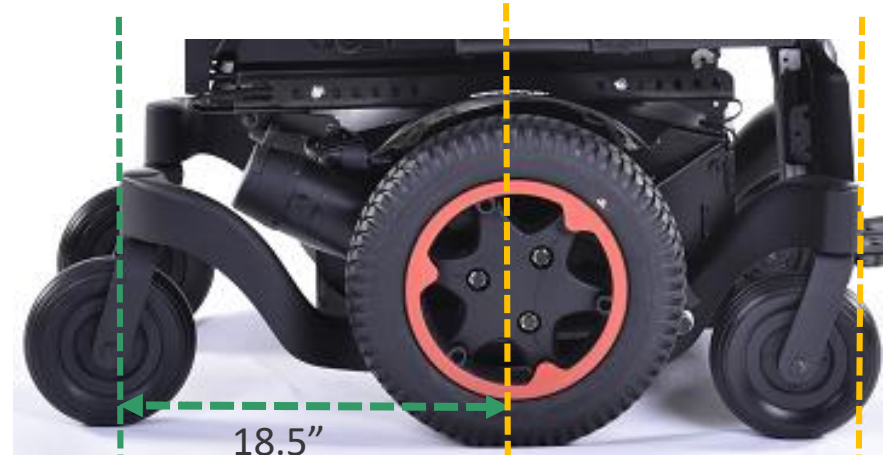
Feature

- ✓ Ultra compact drive base with 'true' mid wheel drive technology

Benefits

- Easily accesses indoor environments
 - Through-floor lifts
- Increased traction and lateral stability – as user positioned over drive wheels
 - Ideal for wider seat sizes and outdoor performance
- Less need to consider rearward swing and 'hang'

DRIVE WHEEL POSITION



Q300 M Mini 30"



Pride Stretto 32.5"

Technical Features – Base



Feature

- ✓ Fold-down backrest option
- ✓ Total chair weight (incl 41Ah batteries) from 103kg

Benefits

- Ideal for hoisting and storage - compact package:
 - Fold-down backrest
 - 41Ah batteries
 - Single post armrests
 - Swing away legrests



Dimensions



520-570mm



Minimum 1060mm

■ Total width

- ✓ Minimum 520mm - 12.5" drive wheels
- ✓ Maximum 570mm - 14" drive wheels

■ Overall length

- ✓ Q300 M Mini (CM Legrest) 1060-1100mm
- ✓ Q300 M Mini (Manual/ Powered ELRs) 1180-1440mm

■ Minimum Turning Radius 560mm

■ Minimum Turning Circle 1120mm

■ Weight (Incl batteries) From 103kg

Technical features – base



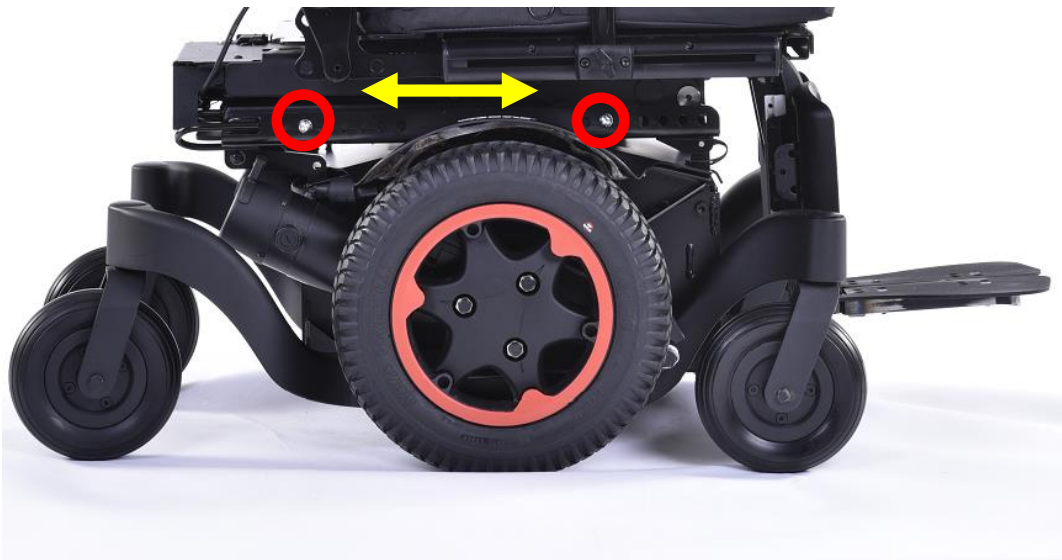
Features

✓ Easier CoG Adjustment

- Modules mount to base from the outside
- CoG adjustment can be made without removing the seat or module
- Adjustments provide optimal traction based on the users weight

Benefits:

- Dealer: easier servicing and adjustments
- User: optimized stability and traction



Technical features – base



Front
post



Feature

✓ Mechanical Seat Height Adjustment

- Similar to the Q400,500, Q700 M bases
 - Front post setting bolts – easily accessible from side
 - Rear post bolts - push the motor downward to access
- Allows 410-490mm seat-to-floor heights with either 41 or 56Ah batteries
- 410mm only available with fixed tilt module
- Seat module interface accepts fixed tilt, 30° COG tilt or 30 ° COG Tilt & Lift modules

Benefits

- Dealer: easier adjustments
- Users: Easier access under tables, specific transfer heights, accessing WAV vehicles
- Clinicians: greater range of heights to accommodate changing needs



Rear post

ISO TRANSIT (STANDARD)



Features

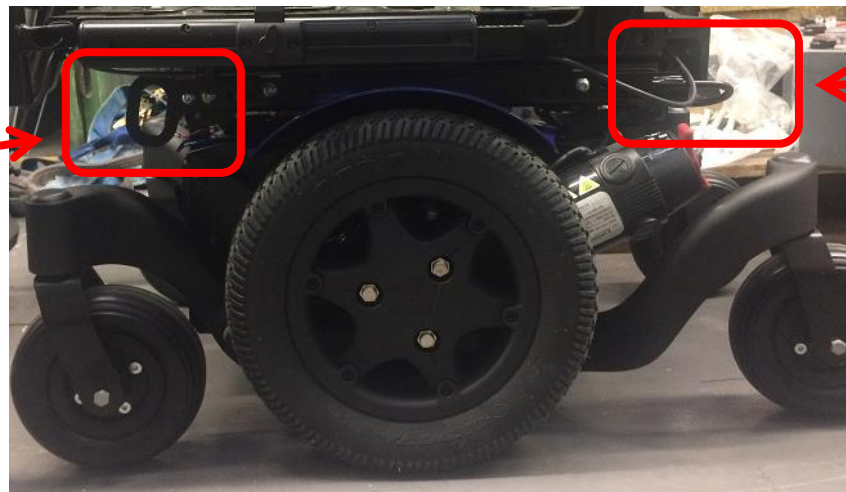
- ✓ **Crash test approved** and includes 4 x Occupied Transit tie-down brackets on the base
- Ready prepared for DAHL & Q'Straint docking systems
 - DAHL Testing – 16th Sept
 - Q'Straint (QLK-150) – In progress

Benefits

- Dealer: low maintenance and easier access to tie-down
- User:
 - ✓ confidence that all chairs are tested "Occupied"
 - ✓ Enables use as 'Drive from' in Wheelchair Accessible Vehicles
- Clinician: assurance that customers will be safe when travelling



Front



Rear

Technical Features - Stability



Feature

- ✓ **Dynamic stability** – max safe slope 6°
- ✓ **Static stability** – 13/15/13°

Benefit

- Excellent overall stability
 - Greater lateral stability with 14" drive wheels (570mm with 14" DWs)
- 6 wheel contact with ground

Technical Features – Seat



Feature

- ✓ Fitted with SEDEO LITE seat
 - One tool adjustment
 - Full powered seat functionality
 - Integrated SEDEO, JAY and Whitmyer
 - Extensive Switch-IT SID's and Link-IT options

Benefit

- Easy to use and adaptable - meets mild to moderate seating needs
- Reduced clinical compromises
- Easy maintenance – true modularity across SEDEO seating range

Technical Features – Seat



Feature

- ✓ Includes SEDEO PRO VaVe updates (Implemented in April 2020)
 - New pommel – greater depth adjustment
 - Longer seat rail option
 - Seat rail short for seat depth 410 - 485 mm
 - Seat rail long for seat depth 510 - 560 mm
 - Updated calf pads on the CML and PCML
 - made of integral foam – easier to clean
 - Updated amputation support
 - Lighter – easier to handle - **how much?**
 - made of integral foam – easier to clean

Benefit

- Greater positioning of belts and thigh supports to match user need
- Easy to use and adaptable - meets mild to moderate seating needs
- Reduced clinical compromises
- Easy maintenance – true component modularity across SEDEO seating range

Technical Features – Seat



Flip down, quick release backrest

Feature

- ✓ Flip down, quick release backrest
(implemented in July 2019)

Benefit

- Quick and easy to remove or lay flat for transportation or storage



Backrest Frame Option

- | | |
|--|------------------------------------|
| <input checked="" type="radio"/> QPL030156 | Backrest, Fixed |
| <input type="radio"/> QPL030098 | Backrest, Flip Down, Quick Release |

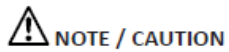
Technical Features – Seat



FLIP DOWN, QUICK RELEASE BACKREST FRAME OPTION

7.3 Folding down the backrest (Fig 7.4)

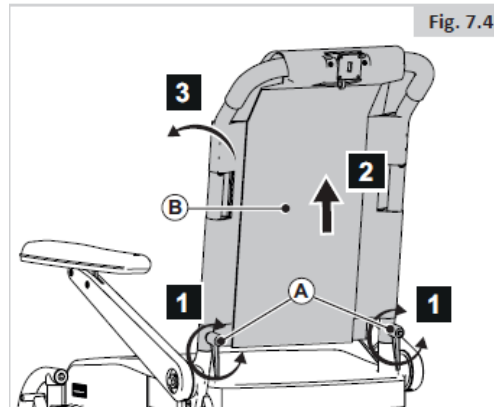
1. Loosen (A).
2. Pull (B) up
3. Fold (B) to the front.



NOTE / CAUTION

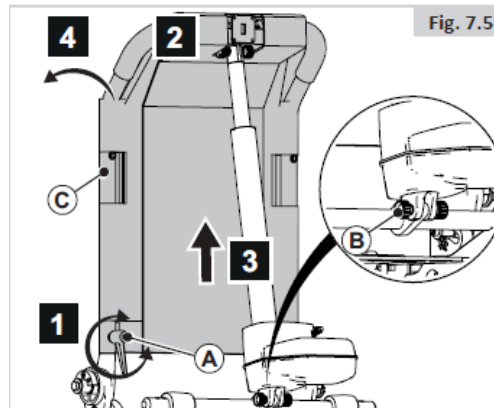
If necessary, first remove the back cushion.

Ensure that (A) is properly secured.



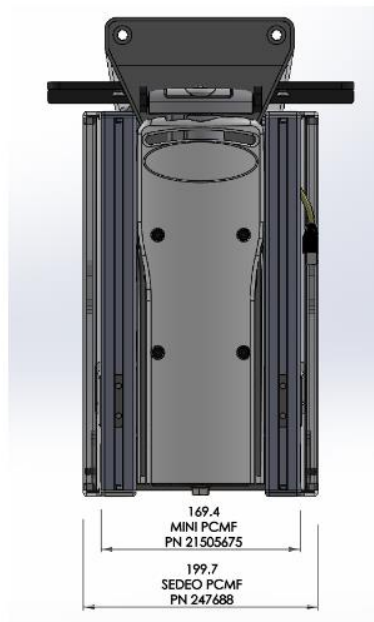
7.4 Folding down the Reclining backrest (Fig 7.5)

1. Loosen (A)
2. Remove (B)
3. Pull (C) up
4. Fold (C) to the front.



Flip down, quick release backrest

Technical Features – Seat



Feature

✓ New Powered Centremount Footplate

- Reduced width of casing (30.3mm) BUT footplate remains in same position
- One tool adjustment
- Articulating and extending

• Dimensions

- Q300 M MINI 169.4mm
- SEDEO PRO PCMF 199.7mm

Benefits

- No clash with front castors
- Same design and functionality as current PCMF on Q400/ 500/700
- Quicker and easier to adjust
- Matches natural movement of the knee – safer and more comfortable for user
- Easier maintenance – modularity of Q-series components

Technical Features – PCMF



- **New Q300 M Mini PCMF**

- Same design and key components as SEDEO PRO PCMF – just narrower casing
- Dual Actuator – articulates and extends
- Split footplates to accommodate different foot positions
- Calf Pads – highly recommended to provide calf support especially when accompanying powered tilt



Power Centre Mount Legrest

QML050076	Centre Mount Legrest, Powered, 90° - 180°
-----------	---

Footplates

QML050072	Footplate, Dual, Height- and Angle-Adjustable, 260 x 150 mm
-----------	---

QML050073	Footplate, Dual, Height- and Angle-Adjustable, Large, 310 x 170 mm
-----------	--

Pad Options

QML050092	Calf Pad, Padded, Pair
-----------	------------------------

Technical Features – Seat



Feature

- ✓ Available with SEDEO PRO Flexi backrest
 - New backrest frame option

Benefits

- Greater lateral trunk stability and positioning capabilities
- Ideal for those with low or mixed trunkal tone or flexible scoliosis – e.g. MND, SCI, CP, MS
- Quick and easier to adjust with one tool adjustment (5mm allen key)
- Easier maintenance – modularity of Q-series components



Technical Features – Backrest

- Available with SEDEO PRO flexible backrests:

- Deep Contour - Active & Passive
- Extra Deep Contour – Passive
- 6 widths
- 3 heights

C – SEDEO PRO Back Cushion

<input type="checkbox"/>	QML030115	SEDEO PRO, Back Cushion, Flexible, Deep Contour, Passive, Adjustable Straps
<input type="checkbox"/>	QML030116	SEDEO PRO, Back Cushion, Flexible, Deep Contour, Active, Adjustable Straps
<input type="checkbox"/>	QML030117	SEDEO PRO, Back Cushion, Flexible, Extra Deep Contour, Passive, Adjustable Straps



C – SEDEO PRO Back Size

Back Cushion Width

<input type="checkbox"/>	BW38	380 mm, For Effective Back Width 380 mm
<input type="checkbox"/>	BW42	420 mm, For Effective Back Width 380 - 420 mm
<input type="checkbox"/>	BW46	460 mm, For Effective Back Width 420 - 460 mm
<input type="checkbox"/>	BW50	500 mm, For Effective Back Width 460 - 500 mm
<input type="checkbox"/>	BW54	540 mm, For Effective Back Width 500 - 540 mm
<input type="checkbox"/>	BW56	560 mm, For Effective Back Width 520 - 560 mm

Back Cushion Height

<input type="checkbox"/>	BH44	440 mm, For Effective Back Height 440 - 500 mm
<input type="checkbox"/>	BH50	440 mm, For Effective Back Height 500 - 560 mm
<input type="checkbox"/>	BH56	440 mm, For Effective Back Height 560 - 620 mm

Technical Features – Styling



Feature

✓ Wide selection of colour options

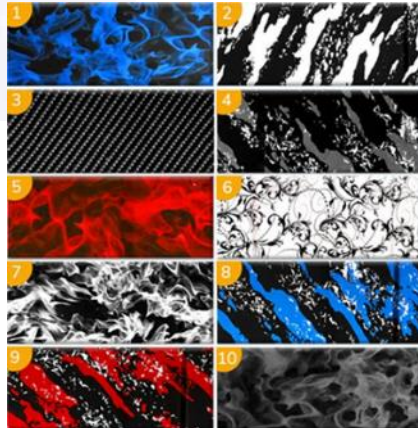
- 4 standard Shroud colours
 - Black, Red, Blue, White
- 7 Colour accents
 - Black, Red, Blue, White, Green, Orange, Silver
- 10 Standardized 'Custom' coloured shroud options



Benefit

- 28 style combinations – greater choice to match user's personal style
- Easier repair & Fleet maintenance – increased modularity across Q- Series range

Technical Features – Styling



Feature

✓ Wide selection of colour options

- 10 Standardized 'Custom' coloured shroud options
- Available with any of 7 coloured accents

Benefit

- 70 style combinations – greatest choice to match user's personal style (98 style combinations in total)
- Easier repair & Fleet maintenance – increased modularity across Q- Series range



Q300 M Mini

*COMPACT IN SIZE
BIG IN PERFORMANCE*