

Omni 2 – Heavy Duty Seat

Retro Fitting Help Guide



OMNI 2 – HEAVY DUTY SEAT



RETRO FITTING HELP GUIDE

Parts Required:

Electronics

- Omni 2 Kit – 20011242 (includes Input Section, Display Screen, 250cm connecting cable)

Backpack, Mounting kit and R-Net bus cable

- 20009167

Omni 2 Flex Mount – Inc. adapter plate

- 20009173

Channel Nuts and Bolts

- 014925 x 2 – M5x12 Cap Head
- 000128100-ET – M5 T-Nut

OMNI 2 – HEAVY DUTY SEAT

RETRO FITTING HELP GUIDE

Parts Required:



OMNI 2 – HEAVY DUTY SEAT

RETRO FITTING HELP GUIDE

Step 1

- Remove Omni 1 or retro fit the Omni flex mount to the armrest. All parts included in the kit.



OMNI 2 – HEAVY DUTY SEAT

RETRO FITTING HELP GUIDE

Step 2

- Remove any cable tidy and disconnect R-Net Bus. Cable from the Omni 1 if removing.

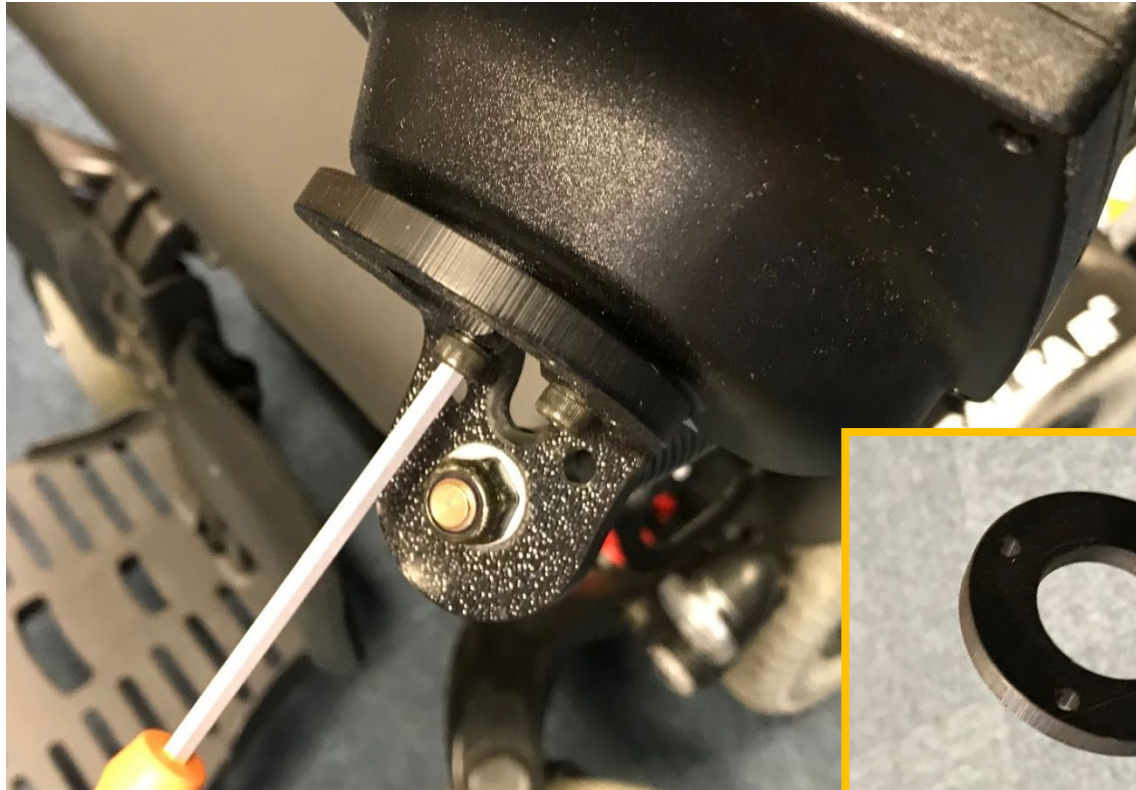


OMNI 2 – HEAVY DUTY SEAT

RETRO FITTING HELP GUIDE

Step 3

- Unscrew Omni 1 from the mounting bracket to remove.



OMNI 2 – HEAVY DUTY SEAT

RETRO FITTING HELP GUIDE

Step 4

- Fix the Omni 2 adapter plate to the Omni 2 Display Module with 2 small bolts.



OMNI 2 – HEAVY DUTY SEAT

RETRO FITTING HELP GUIDE

Step 5

- Fix the Omni 2 with adapter plate to the Omni mounting bracket with 2 bolts.

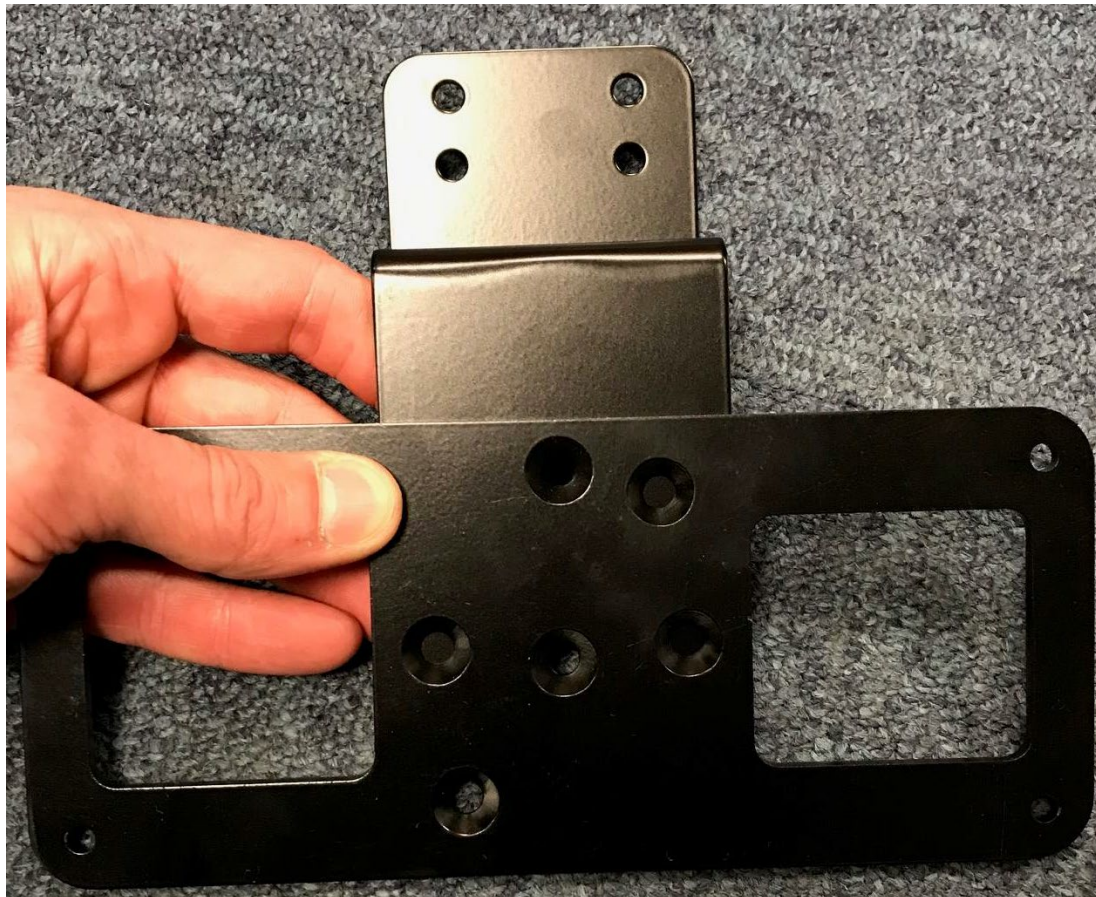


OMNI 2 – HEAVY DUTY SEAT

RETRO FITTING HELP GUIDE

Step 6

- Take the 2 Omni 2 backpack mounting plates that fit together in this orientation.

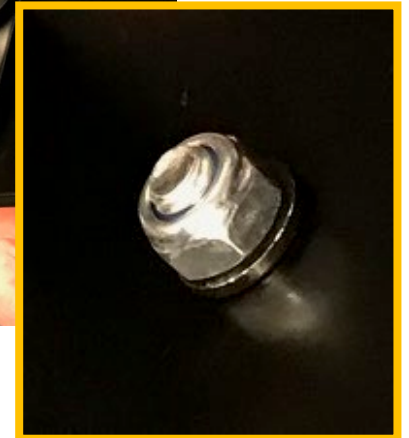
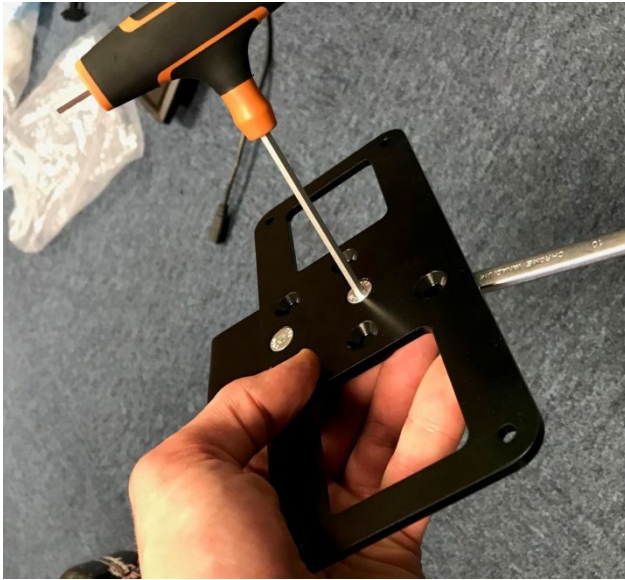


OMNI 2 – HEAVY DUTY SEAT

RETRO FITTING HELP GUIDE

Step 7

- Fix the two brackets together using 2 counter sunk bolts, nuts and washers. You will need a 5mm Allen key and 10mm spanner.

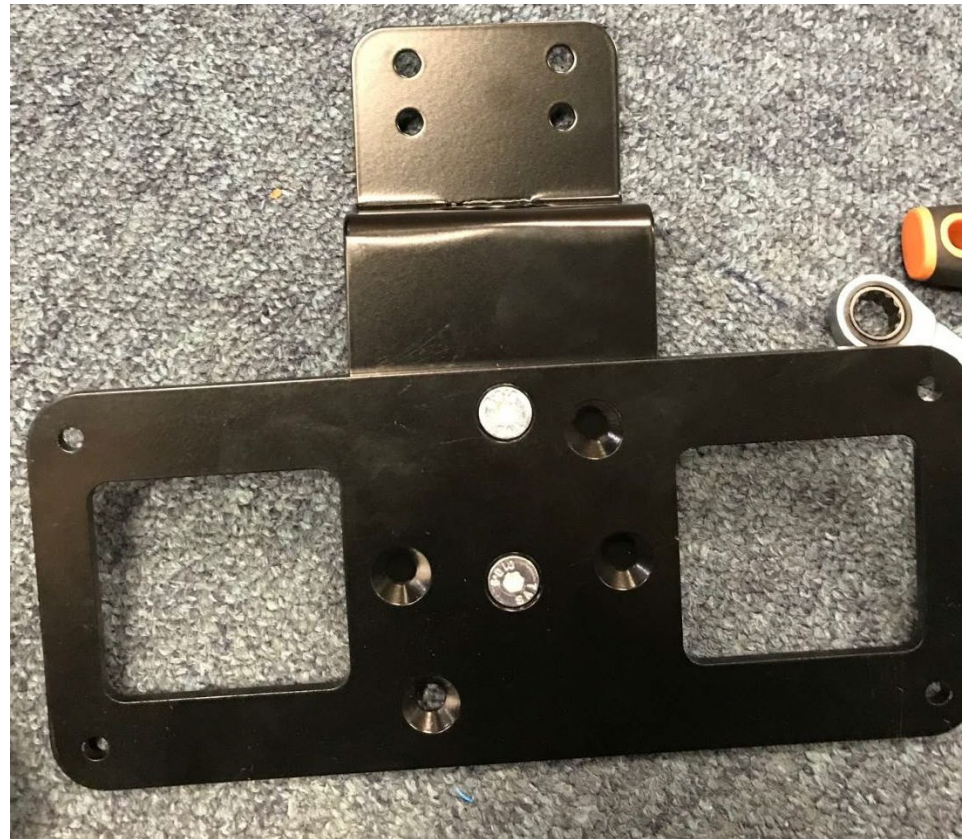


OMNI 2 – HEAVY DUTY SEAT

RETRO FITTING HELP GUIDE

Step 8

- The two brackets should look like this once fitted together correctly.



OMNI 2 – HEAVY DUTY SEAT

RETRO FITTING HELP GUIDE

Step 9

- Open the Omni 2 backpack and drill holes in the orientation shown below.

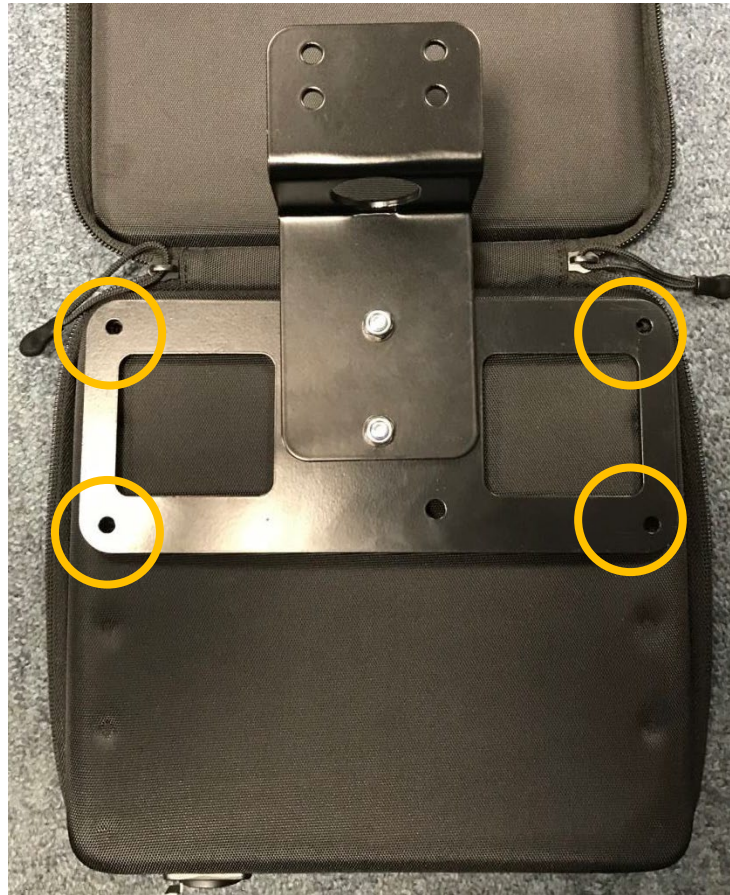


OMNI 2 – HEAVY DUTY SEAT

RETRO FITTING HELP GUIDE

Step 10

- Turn the Omni 2 backpack over and line up the mounting plate so that the holes line up.



OMNI 2 – HEAVY DUTY SEAT

RETRO FITTING HELP GUIDE

Step 11

- Use a 8mm spanner and 5mm Allen key to fix the mounting plate to the backpack.

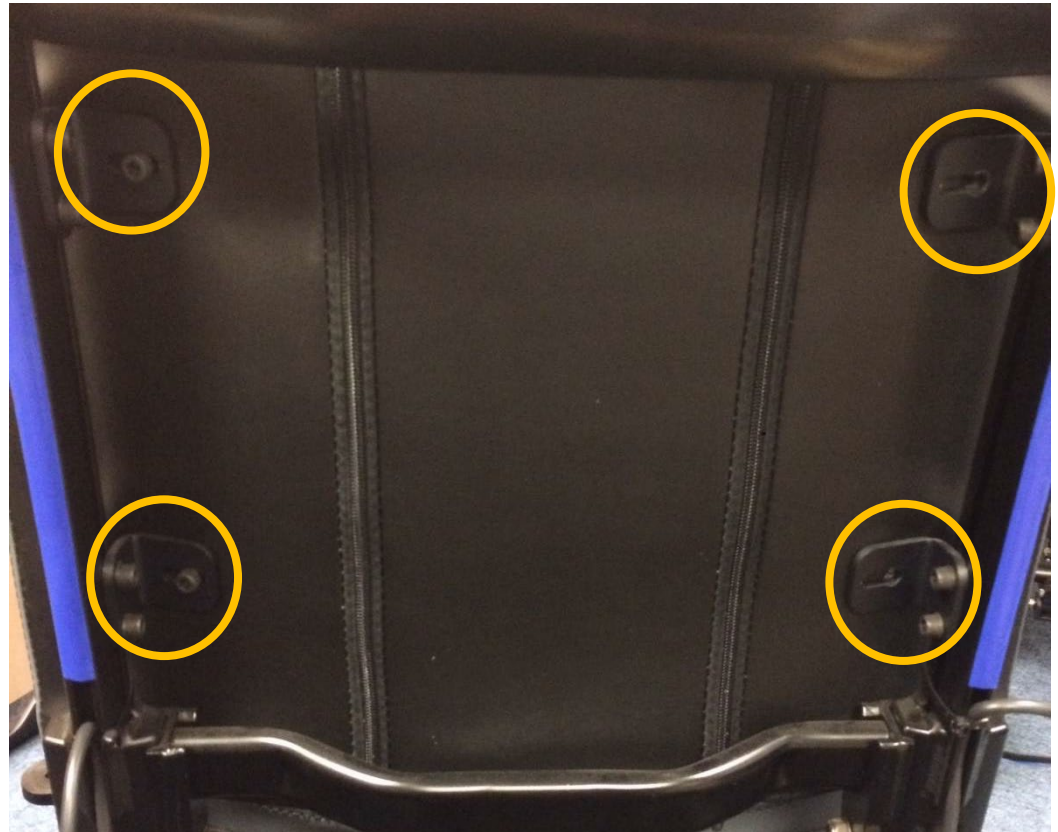
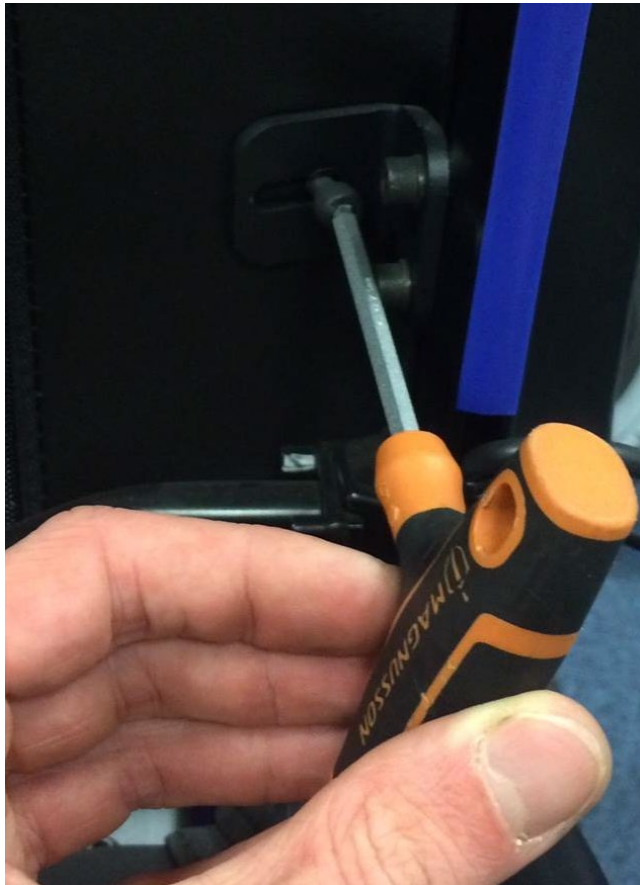


OMNI 2 – HEAVY DUTY SEAT

RETRO FITTING HELP GUIDE

Step 12

- Remove the Jay Comfort backrest.



OMNI 2 – HEAVY DUTY SEAT

RETRO FITTING HELP GUIDE

Step 13

- Backrest removed.



OMNI 2 – HEAVY DUTY SEAT

RETRO FITTING HELP GUIDE

Step 14

- Use a 5mm Allen key to remove the backrest tension bar. Remove both bolts from both sides but retain the bolt receiver blocks.



OMNI 2 – HEAVY DUTY SEAT

RETRO FITTING HELP GUIDE

Step 15

- Retain these parts for when re-fitting.



OMNI 2 – HEAVY DUTY SEAT

RETRO FITTING HELP GUIDE

Step 16

- Remove the backrest tension bar and rotate it so that you can see the channel inside.



OMNI 2 – HEAVY DUTY SEAT

RETRO FITTING HELP GUIDE

Step 17

- Fix the M5 bolts into the channel nuts and slide into the channel in the backrest tensioner.



OMNI 2 – HEAVY DUTY SEAT

RETRO FITTING HELP GUIDE

Step 18

- Remove the M5 bolts from the channel nuts.

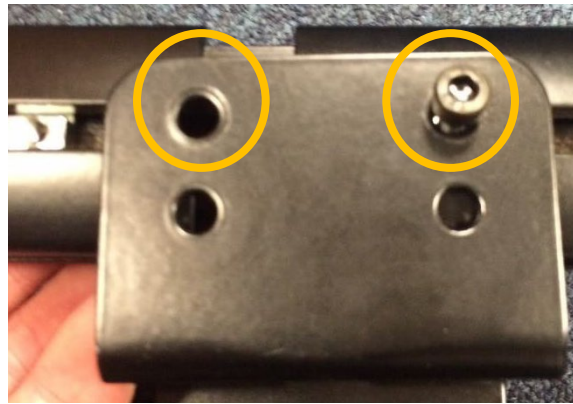


OMNI 2 – HEAVY DUTY SEAT

RETRO FITTING HELP GUIDE

Step 19

- Line up the Omni 2 backpack mounting bracket with the channel nuts and use the M5 bolts to secure centrally on the backrest tensioner bar.

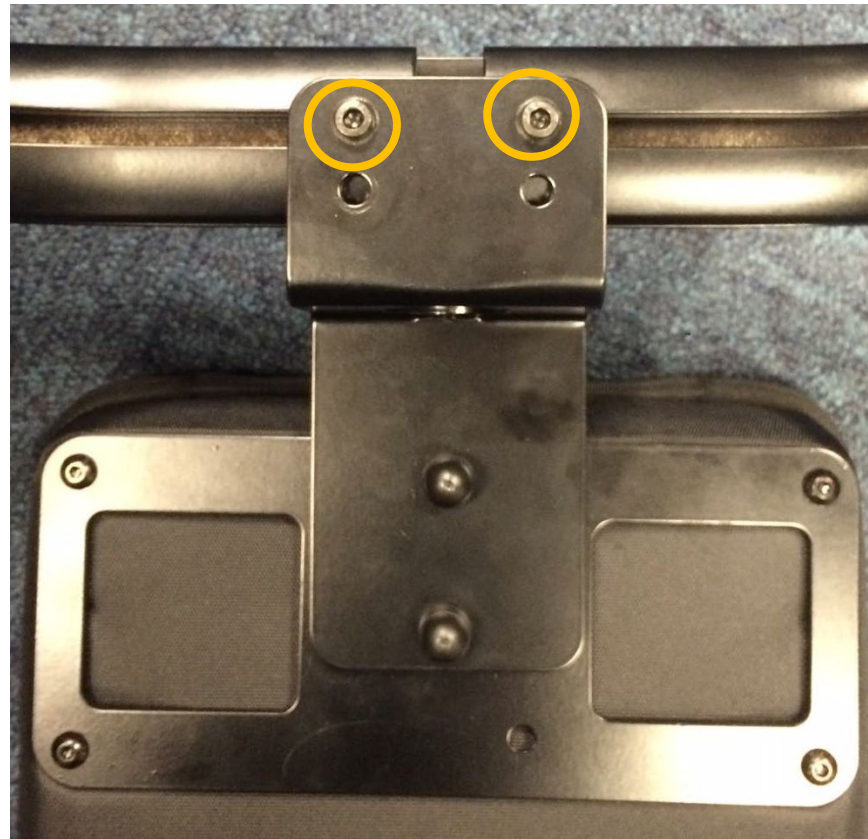


OMNI 2 – HEAVY DUTY SEAT

RETRO FITTING HELP GUIDE

Step 20

- Tighten the bolts to secure to the backrest tensioner bar.



OMNI 2 – HEAVY DUTY SEAT

RETRO FITTING HELP GUIDE

Step 21

- Line up the backrest tensioner bar with the backposts.



OMNI 2 – HEAVY DUTY SEAT

RETRO FITTING HELP GUIDE

Step 22

- Secure the backrest tensioner back in place.



OMNI 2 – HEAVY DUTY SEAT

RETRO FITTING HELP GUIDE

Step 23

- Secure the Jay Comfort backrest to the mounting brackets.



OMNI 2 – HEAVY DUTY SEAT

RETRO FITTING HELP GUIDE

Step 24

- Fit the Omni Flex mount bracket into the channels if required.

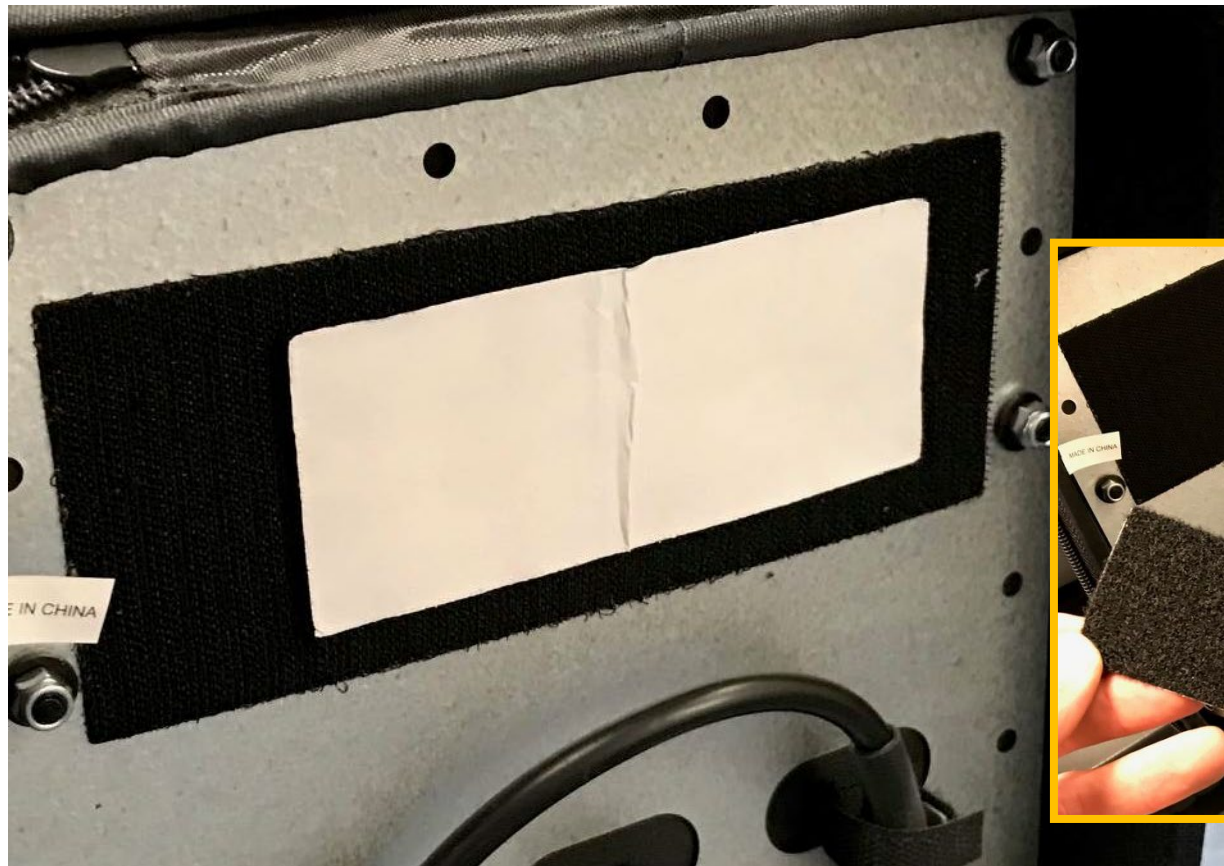


OMNI 2 – HEAVY DUTY SEAT

RETRO FITTING HELP GUIDE

Step 25

- Open the backpack and remove the Velcro pad.



OMNI 2 – HEAVY DUTY SEAT

RETRO FITTING HELP GUIDE

Step 26

- Take the Omni 2 Input Module and fix the Velcro pad to the back of the module.



OMNI 2 – HEAVY DUTY SEAT

RETRO FITTING HELP GUIDE

Step 27

- Fix the Input Module to the Velcro pad inside the backpack. Ensure you leave enough space for the R-Net bus cable.



OMNI 2 – HEAVY DUTY SEAT

RETRO FITTING HELP GUIDE

Step 28

- Plug in the charging loom into the port on the right hand side of the Input Module.



OMNI 2 – HEAVY DUTY SEAT

RETRO FITTING HELP GUIDE

Step 29

- Plug in the charging loom into the port on the left hand side of the Input Module.



OMNI 2 – HEAVY DUTY SEAT

RETRO FITTING HELP GUIDE

Step 30

- Connect the Omni 2 Input Module into the R-Net bus system.

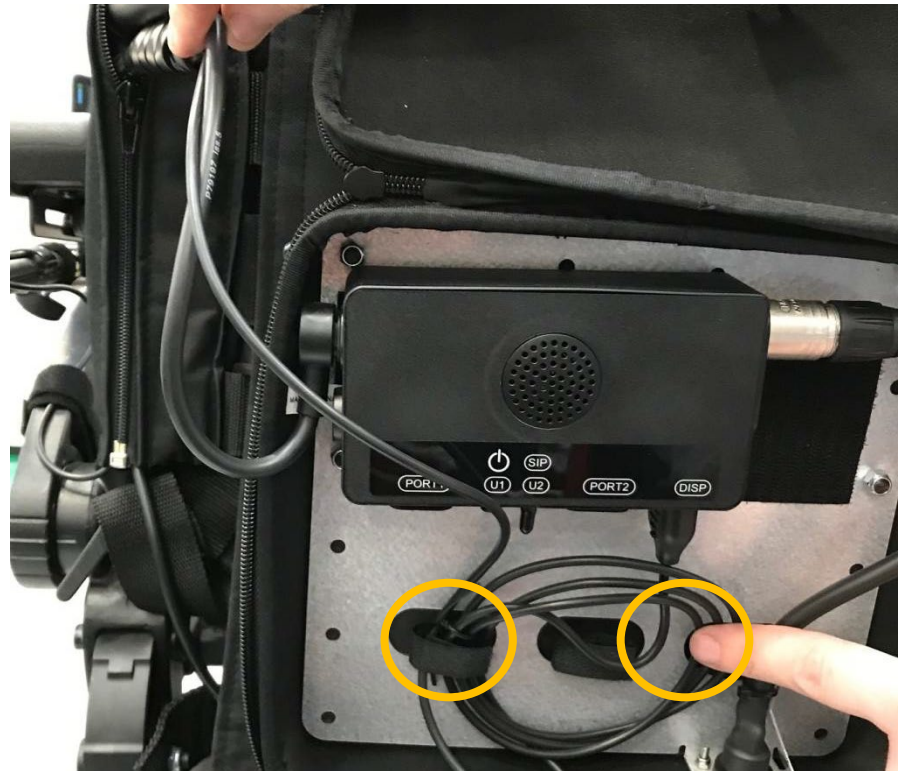
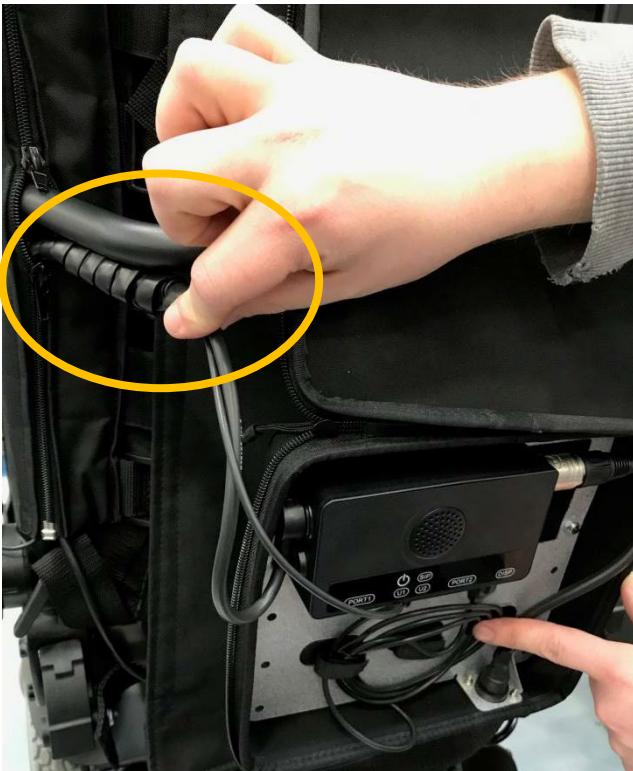


OMNI 2 – HEAVY DUTY SEAT

RETRO FITTING HELP GUIDE

Step 30 cont.....

- Connect the Omni 2 Input Module into the R-Net bus system.



OMNI 2 – HEAVY DUTY SEAT

RETRO FITTING HELP GUIDE

Step 31

- Ensure you use cable tidies to secure the Omni 2 connecting cable.

