

Omni 2 – Sedeo Pro

Retro Fitting Help Guide



OMNI 2 – SEDEO PRO

RETRO FITTING HELP GUIDE



Parts Required:

Electronics

- Omni 2 Kit – 20011242 (includes Input Section, Display Screen, 250cm connecting cable)

Bag Mounting

- Backpack – 20009190-010
- R-Net Bus. Cable – 20011035
- Fixing Bracket – 22509144

Joystick Mounting (Left and Right)

- JSM Swing Away Mount – 20009252
- JSM Fixed Mount - 20009251

OMNI 2 – SEDEO PRO

RETRO FITTING HELP GUIDE

Parts Required:



OMNI 2 – SEDEO PRO

RETRO FITTING HELP GUIDE

Step 1

- Open the Omni 2 backpack so you can see the holes in the metal plate inside.



OMNI 2 – SEDEO PRO

RETRO FITTING HELP GUIDE

Step 2

- Use a drill with a 5mm bit to drill holes through the fabric



OMNI 2 – SEDEO PRO

RETRO FITTING HELP GUIDE

Step 3

- Drill the holes in positions shown below.



OMNI 2 – SEDEO PRO

RETRO FITTING HELP GUIDE

Step 4

- Remove the 4 bolts that secure the backrest mounting brackets to the channels in the seat frame. Be careful not to lose the channel nuts.



OMNI 2 – SEDEO PRO

RETRO FITTING HELP GUIDE

Step 5

- Remove the backrest completely as this makes the job easier.



OMNI 2 – SEDEO PRO

RETRO FITTING HELP GUIDE

Step 6

- Attach the top backpack mounting bracket to the backrest mounting plates with 4 bolts in the orientation show below.



OMNI 2 – SEDEO PRO

RETRO FITTING HELP GUIDE

Step 7

- This is how it should look once fixed. Don't over tighten the bolts at this point.



OMNI 2 – SEDEO PRO

RETRO FITTING HELP GUIDE

Step 8

- Fix the lower bracket in the same way and in the same orientation.

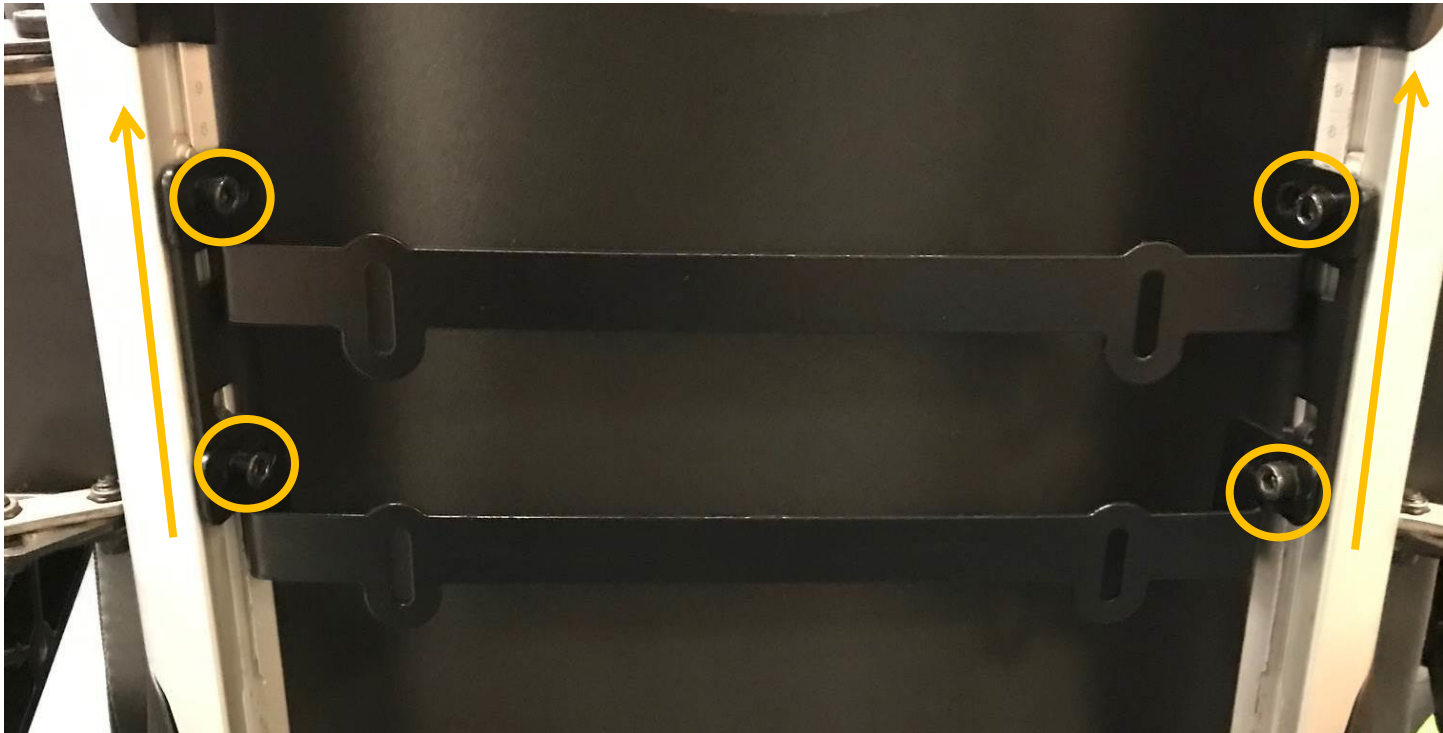


OMNI 2 – SEDEO PRO

RETRO FITTING HELP GUIDE

Step 9

- This is what it should look like once fitted. Before tightening the bolts push the brackets high on the back post channels then tighten.

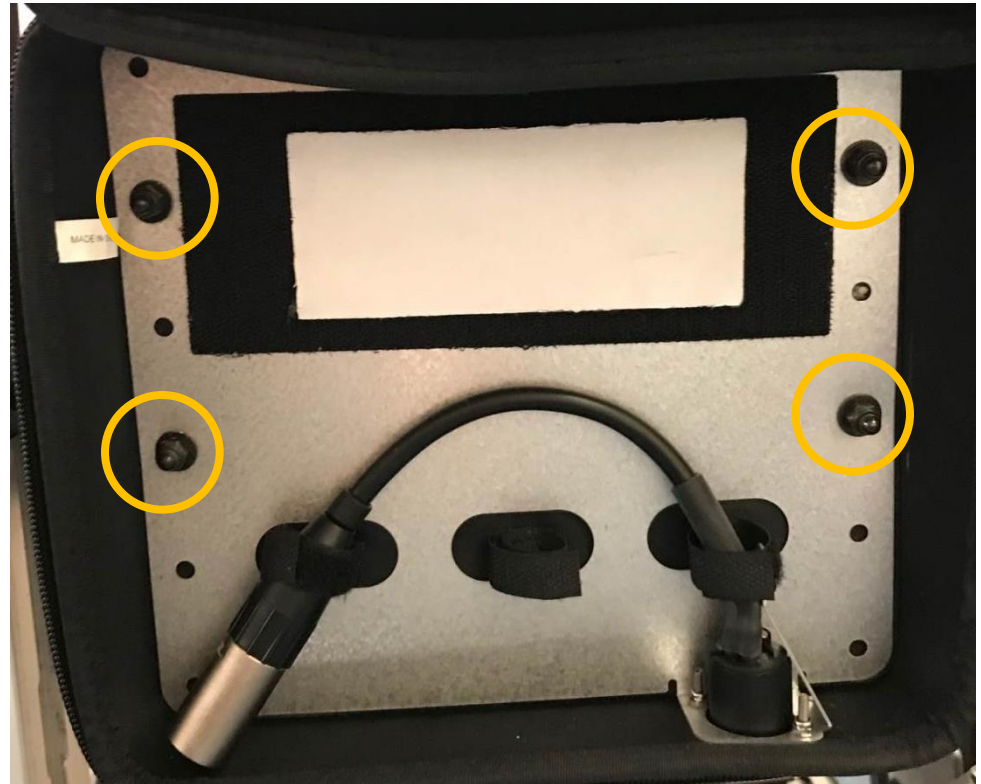


OMNI 2 – SEDEO PRO

RETRO FITTING HELP GUIDE

Step 10

- Fix the bag to the bracket using 4 small screws, washers and nuts. The nuts secure on the inside of the bag.



OMNI 2 – SEDEO PRO

RETRO FITTING HELP GUIDE

Step 11

- This is how the backpack should look once fitted.



OMNI 2 – SEDEO PRO

RETRO FITTING HELP GUIDE

Step 12

- Remove the Velcro pad from inside the backpack.



OMNI 2 – SEDEO PRO

RETRO FITTING HELP GUIDE

Step 13

- Take the Input Module and stick the Velcro pad centrally onto the back.



OMNI 2 – SEDEO PRO

RETRO FITTING HELP GUIDE

Step 14

- Fix the Input Module to the Velcro pad inside the backpack. Leave enough room to connect the R-Net Bus. loom on the left hand side.



OMNI 2 – SEDEO PRO

RETRO FITTING HELP GUIDE

Step 15

- Take the Omni mounting bracket (Fixed or Swing away). Remove the standard joystick mounting bracket.



OMNI 2 – SEDEO PRO

RETRO FITTING HELP GUIDE

Step 16

- Fix the Omni 2 mounting piece to the swing away mount. Secure with fixing bolt.



OMNI 2 – SEDEO PRO

RETRO FITTING HELP GUIDE

Step 17

- Fit 2 channel nuts to the bottom of the swing away mount using two bolts.



OMNI 2 – SEDEO PRO

RETRO FITTING HELP GUIDE

Step 18

- Remove the front armpad fixing bolt.



OMNI 2 – SEDEO PRO

RETRO FITTING HELP GUIDE

Step 19

- Slide swing away mount into the channels under the armpad and replace the armpad fixing bolt.

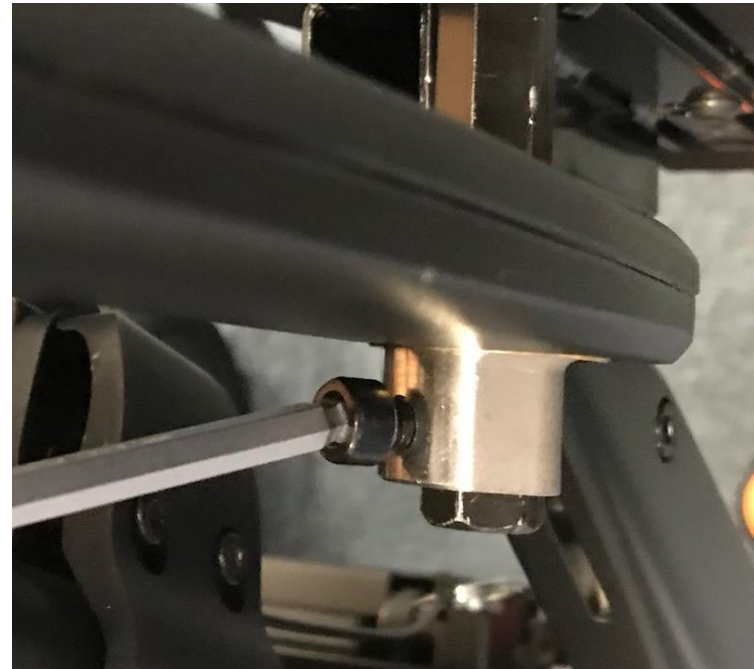


OMNI 2 – SEDEO PRO

RETRO FITTING HELP GUIDE

Step 20

- Secure the fixing bolts into the channel nuts. It is easier to remove the swing away section to access the bolts. Once tightened, refit the swing away mount.



OMNI 2 – SEDEO PRO

RETRO FITTING HELP GUIDE

Step 21

- Remember to fit the bolt back into the bottom.



OMNI 2 – SEDEO PRO

RETRO FITTING HELP GUIDE

Step 22

- Take one of the Link-It base module and fit on to Hexagon adapter.



OMNI 2 – SEDEO PRO

RETRO FITTING HELP GUIDE

Step 23

- Fit the connecting rod into the base module and fit the second base module to the connecting rod.

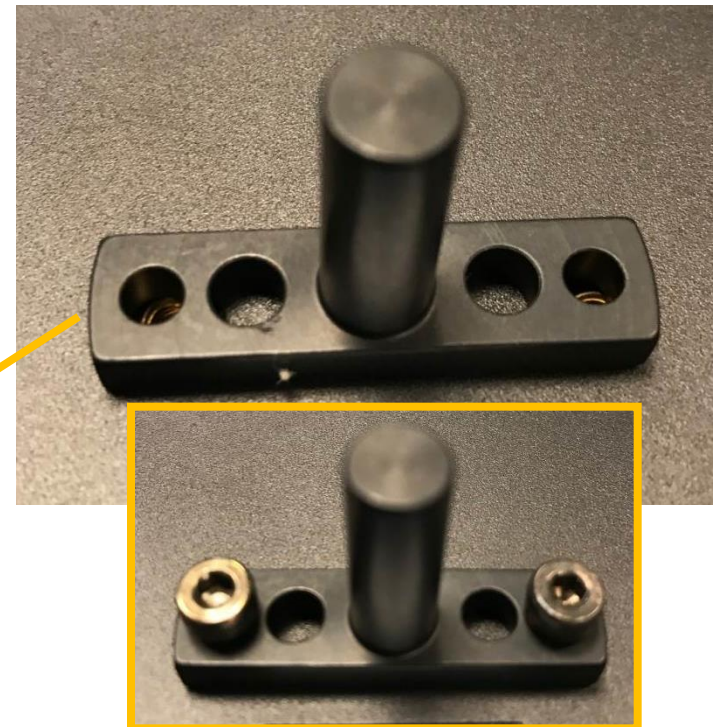


OMNI 2 – SEDEO PRO

RETRO FITTING HELP GUIDE

Step 24

- Take the Omni 2 Display Module and fix the Link-It adapter bracket with 2 small bolts.



OMNI 2 – SEDEO PRO

RETRO FITTING HELP GUIDE

Step 25

- Fix the Omni 2 Display to the top Link-It base module.

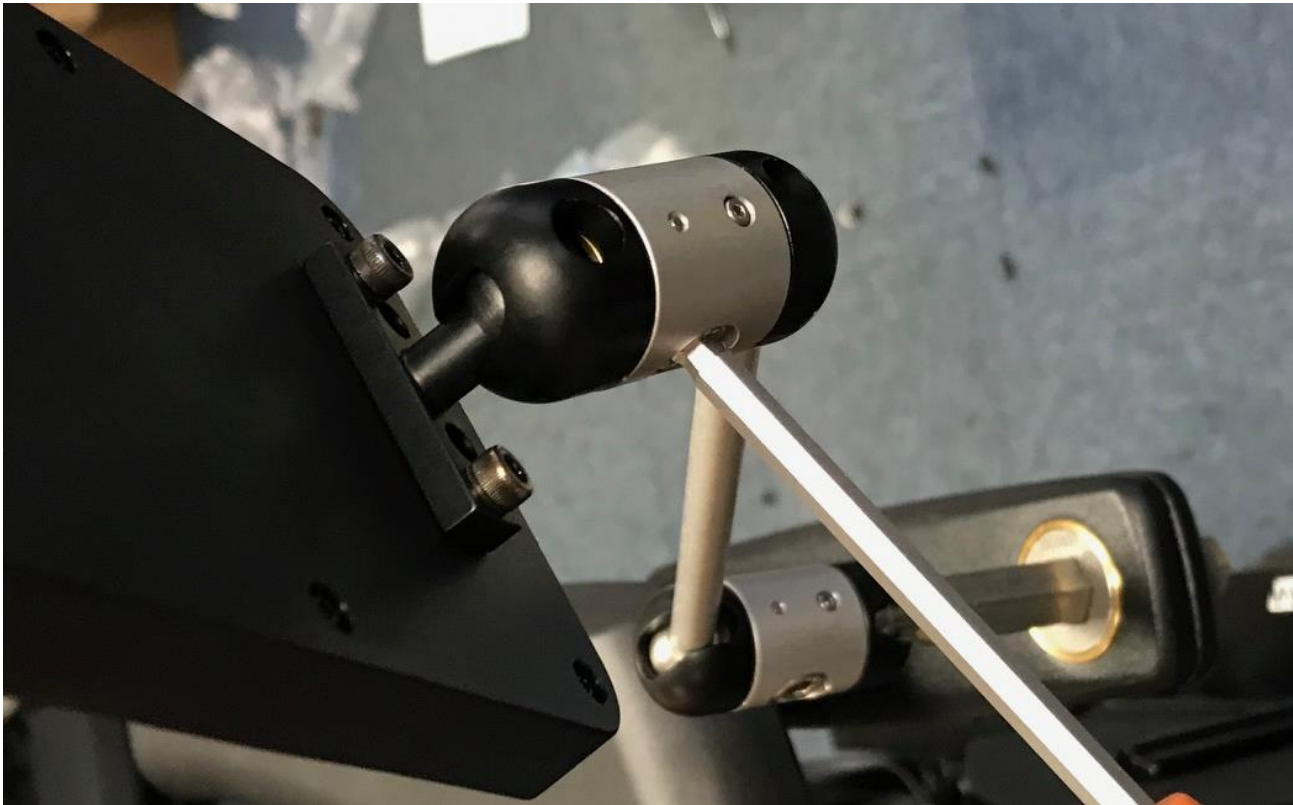


OMNI 2 – SEDEO PRO

RETRO FITTING HELP GUIDE

Step 26

- Position the Omni 2 Display and tighten the Link-It base module with a 5mm Allen Key.

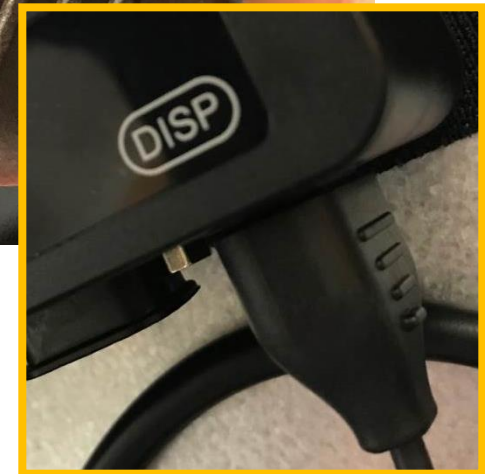


OMNI 2 – SEDEO PRO

RETRO FITTING HELP GUIDE

Step 27

- Take the Omni 2 display connecting cable and plug one end into the DISP port on the Input Module in the backpack.

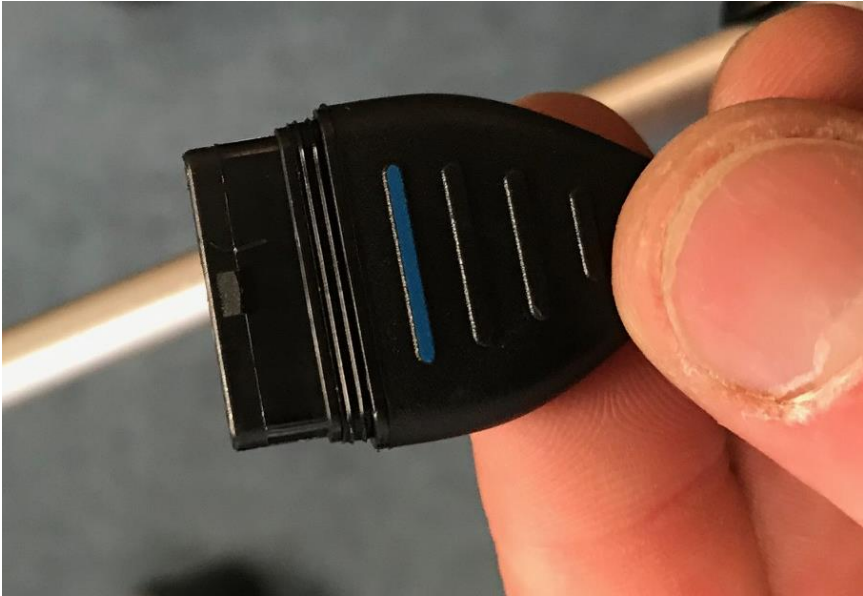


OMNI 2 – SEDEO PRO

RETRO FITTING HELP GUIDE

Step 28

- Connect the other end of the connecting cable to the port in the bottom of the Omni 2 Display Module.

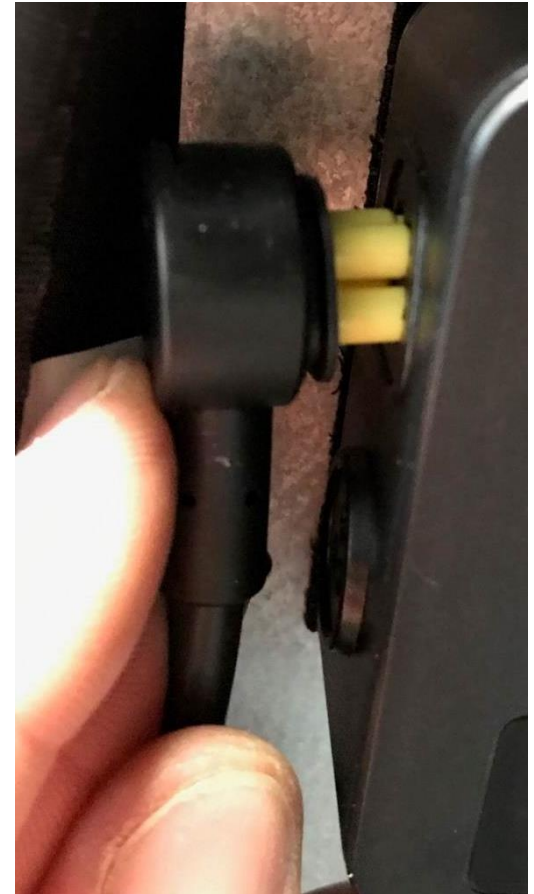


OMNI 2 – SEDEO PRO

RETRO FITTING HELP GUIDE

Step 29

- Connect the 30cm R-Net bus. cable to the port on the left side of the Omni 2 input module.



OMNI 2 – SEDEO PRO

RETRO FITTING HELP GUIDE

Step 30

- Use the cable tidy clips to secure the connecting cable to the Link-It connecting rod.



OMNI 2 – SEDEO PRO

RETRO FITTING HELP GUIDE

Step 31

- Tidy the connecting cables using clips and Velcro. Loop any excess connecting cable using the Velcro in the backpack.



OMNI 2 – SEDEO PRO

RETRO FITTING HELP GUIDE

Step 32

- Plug the charging cable into the port on the right hand side of the Omni 2 Input Module.



OMNI 2 – SEDEO PRO

RETRO FITTING HELP GUIDE

Step 33

- Connect the Omni 2 Input Module into the R-Net bus. system.

