

Omni 2 – Salsa Hotseat

Retro Fitting Help Guide



OMNI 2 – SALSA HOTSEAT

RETRO FITTING HELP GUIDE



Parts Required:

Electronics

- Omni 2 Kit – 20011242 (includes Input Section, Display Screen, 250cm connecting cable)

backpack, Mounting kit and R-Net bus. cable

- 20009167

Omni 2 Flex Mount – Inc. adapter plate

- 20009173

OMNI 2 – SALSA HOTSEAT

RETRO FITTING HELP GUIDE

Parts Required:



OMNI 2 – SALSA HOTSEAT

RETRO FITTING HELP GUIDE

Step 1

- Remove Omni 1 or retro fit the Omni flex mount to the armrest. All parts included in the kit.



OMNI 2 – SALSA HOTSEAT

RETRO FITTING HELP GUIDE

Step 2

- Remove any cable tidy and disconnect R-Net Bus. Cable from the Omni 1 if removing.

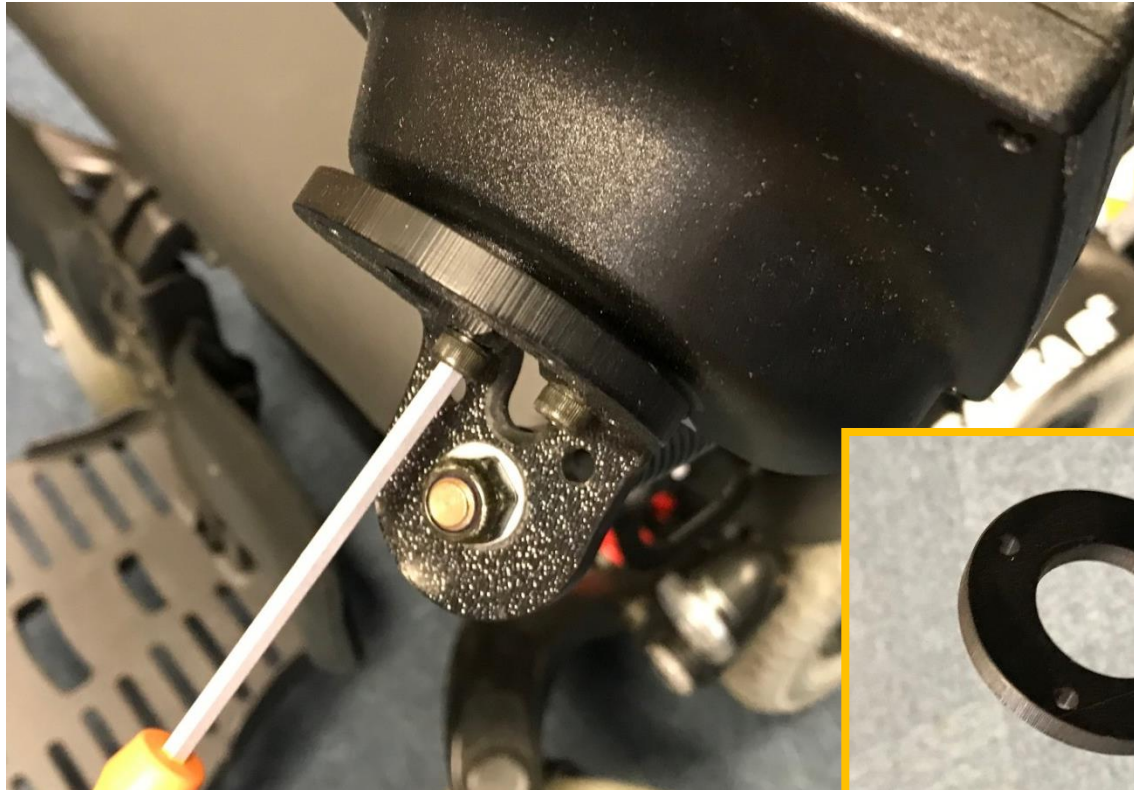


OMNI 2 – SALSA HOTSEAT

RETRO FITTING HELP GUIDE

Step 3

- Unscrew Omni 1 from the mounting bracket to remove.



OMNI 2 – SALSA HOTSEAT

RETRO FITTING HELP GUIDE

Step 4

- Fix the Omni 2 adapter plate to the Omni 2 Display Module with 2 small bolts.

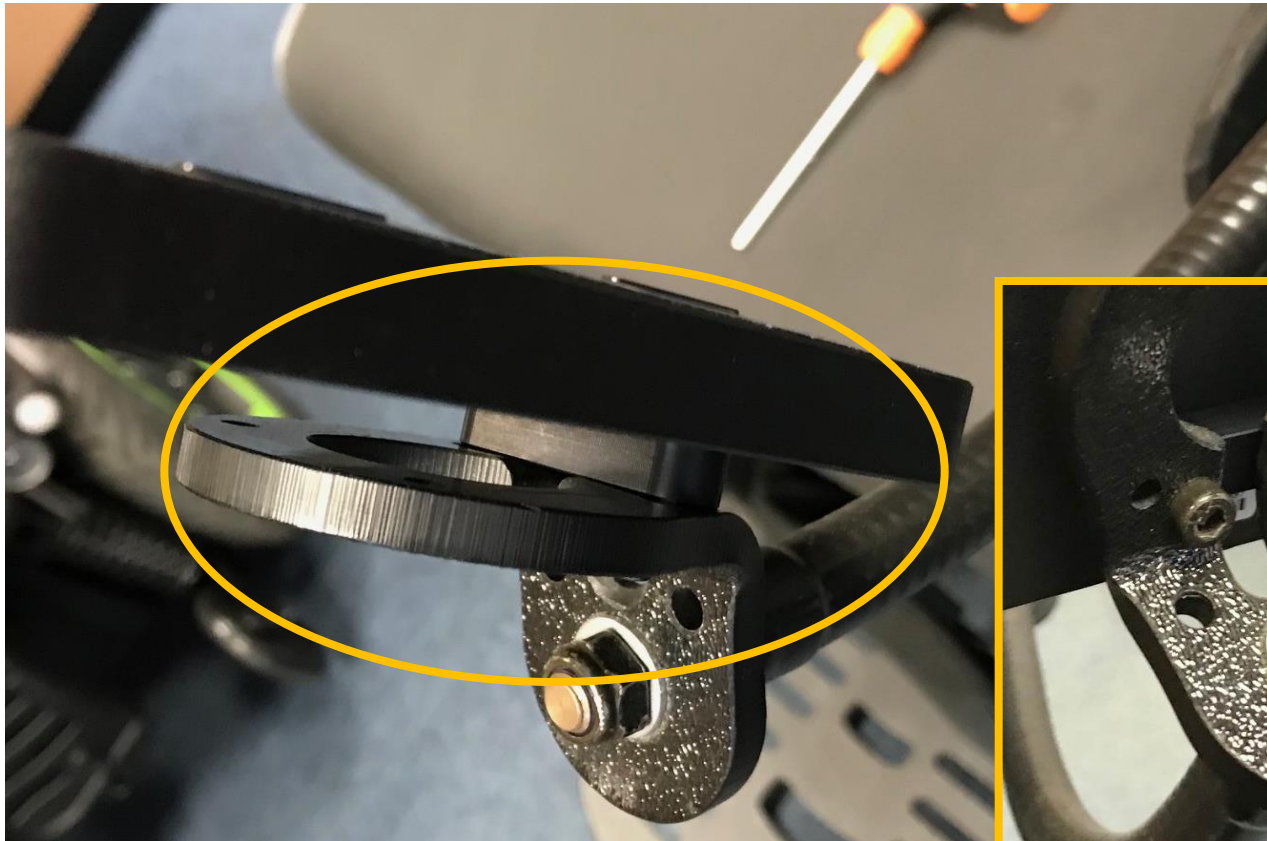


OMNI 2 – SALSA HOTSEAT

RETRO FITTING HELP GUIDE

Step 5

- Fix the Omni 2 with adapter plate to the Omni mounting bracket with 2 bolts.



OMNI 2 – SALSA HOTSEAT

RETRO FITTING HELP GUIDE

Step 6

- Take the 2 Omni 2 backpack mounting plates that fit together in this orientation.

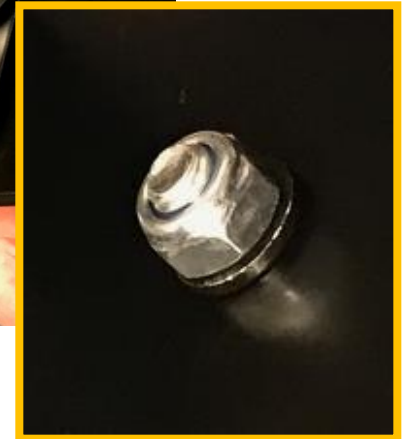


OMNI 2 – SALSA HOTSEAT

RETRO FITTING HELP GUIDE

Step 7

- Fix the two brackets together using 2 counter sunk bolts, nuts and washers. You will need a 5mm Allen key and 10mm spanner.



OMNI 2 – SALSA HOTSEAT

RETRO FITTING HELP GUIDE

Step 8

- The two brackets should look like this once fitted together correctly.



OMNI 2 – SALSA HOTSEAT

RETRO FITTING HELP GUIDE

Step 9

- Open the Omni 2 backpack and drill holes in the orientation shown below.



OMNI 2 – SALSA HOTSEAT

RETRO FITTING HELP GUIDE

Step 10

- Turn the Omni 2 backpack over and line up the mounting plate so that the holes line up.



OMNI 2 – SALSA HOTSEAT

RETRO FITTING HELP GUIDE

Step 11

- Use a 8mm spanner and 5mm Allen key to fix the mounting plate to the backpack.



OMNI 2 – SALSA HOTSEAT

RETRO FITTING HELP GUIDE

Step 12

- Position the 4 clamping brackets around the widest part of the backrest tensioner bar and fit the 4 long bolts through the holes in the brackets.

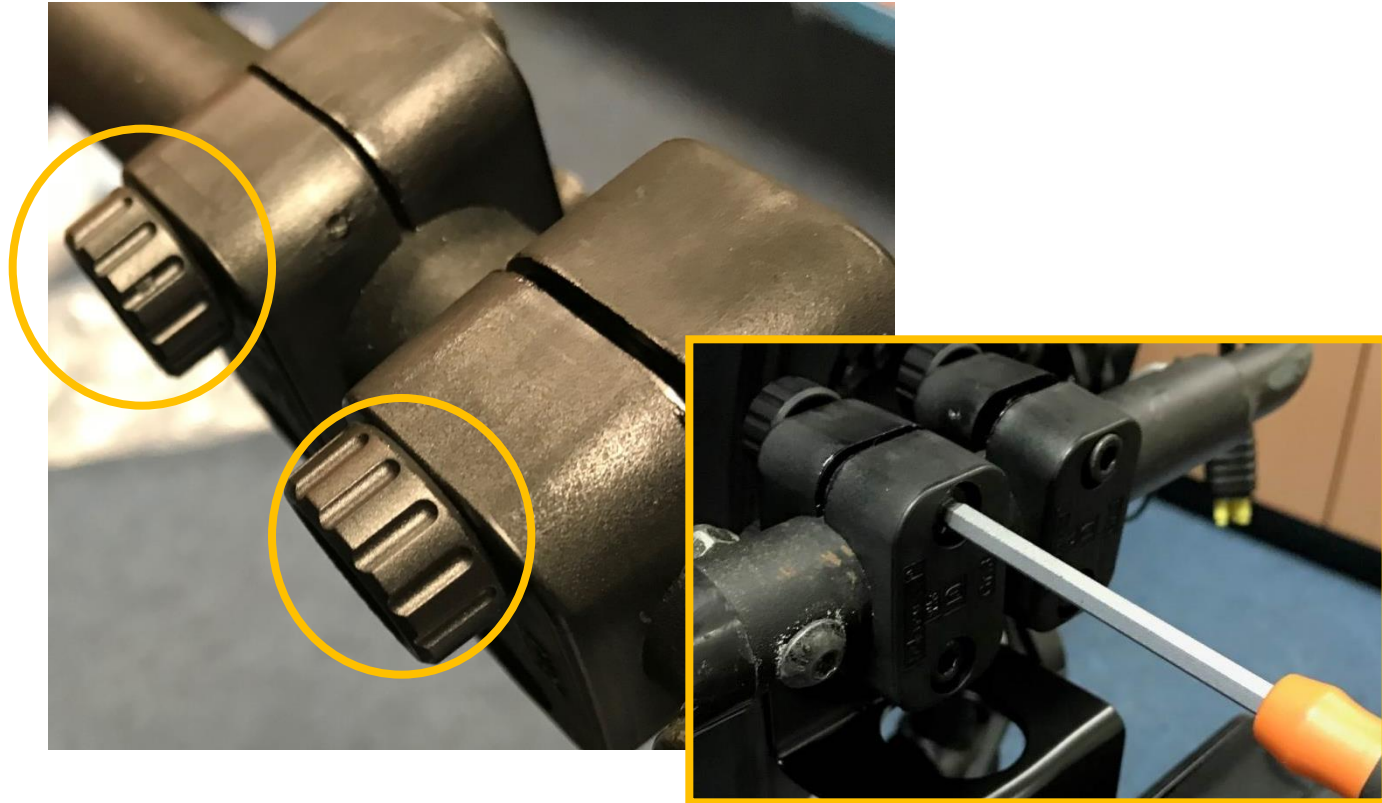


OMNI 2 – SALSA HOTSEAT

RETRO FITTING HELP GUIDE

Step 13

- Secure the brackets in place by using two of the hand wheels on the top two bolts. Use a 5mm Allen key but don't over tighten at this stage.

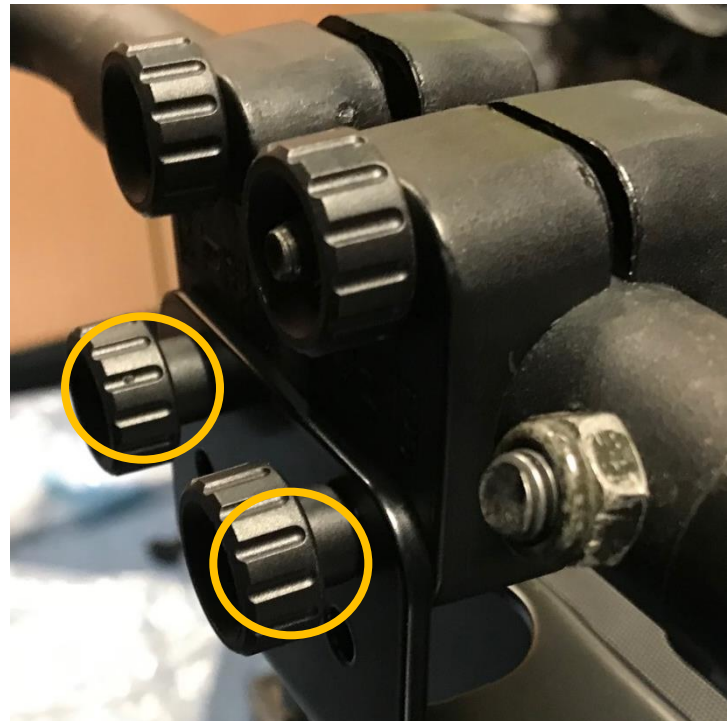


OMNI 2 – SALSA HOTSEAT

RETRO FITTING HELP GUIDE

Step 14

- Position the backpack and mounting plate so that the top two holes line up with the bottom bolts on the mounting brackets and use the 2 remaining hand wheels to secure. Use a 5mm Allen key.

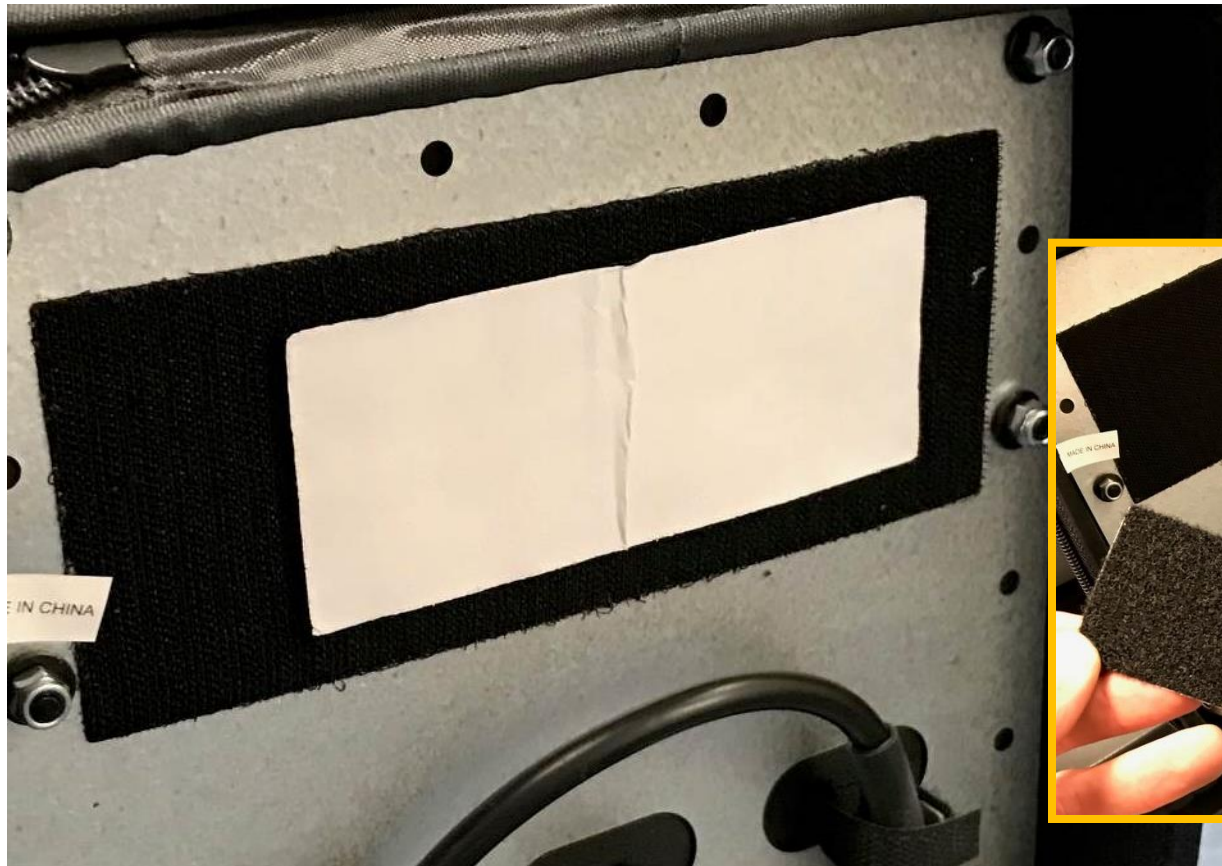


OMNI 2 – SALSA HOTSEAT

RETRO FITTING HELP GUIDE

Step 15

- Open the backpack and remove the Velcro pad.



OMNI 2 – SALSA HOTSEAT

RETRO FITTING HELP GUIDE

Step 16

- Take the Omni 2 Input Module and fix the Velcro pad to the back of the module.



OMNI 2 – SALSA HOTSEAT

RETRO FITTING HELP GUIDE

Step 17

- Fix the Input Module to the Velcro pad inside the backpack. Ensure you leave enough space for the R-Net bus. cable.



OMNI 2 – SALSA HOTSEAT

RETRO FITTING HELP GUIDE

Step 18

- Plug in the charging loom into the port on the right hand side of the Input Module.



OMNI 2 – SALSA HOTSEAT

RETRO FITTING HELP GUIDE

Step 19

- Plug in the charging loom into the port on the right hand side of the Input Module.



OMNI 2 – SALSA HOTSEAT

RETRO FITTING HELP GUIDE

Step 20

- Connect the Omni 2 Input Module into the R-Net bus. system.

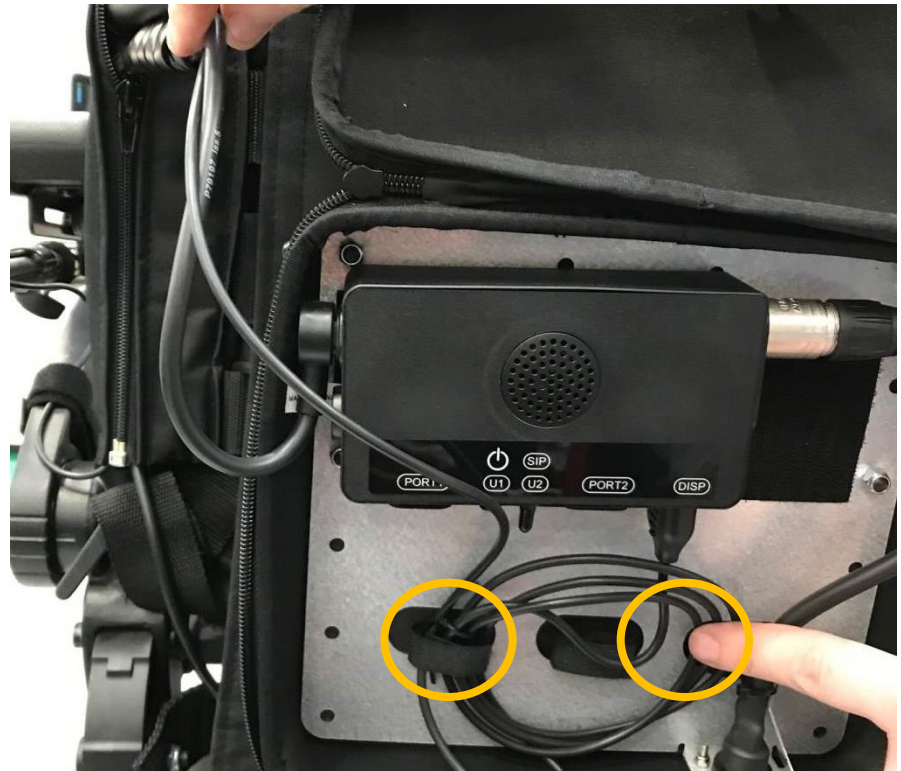


OMNI 2 – SALSA HOTSEAT

RETRO FITTING HELP GUIDE

Step 20 cont.....

- Connect the Omni 2 Input Module into the R-Net bus. system.



OMNI 2 – SALSA HOTSEAT

RETRO FITTING HELP GUIDE

Step 21

- Ensure you use cable tidies to secure the Omni 2 connecting cable.

