

Folding Push Device

R20



UK
CA
CE

ORDER FORM

Errors and imissions excepted.

Billing Address Or Customer-ID			Shipping Address		Identical To Billing Address	
C.-ID:			C.-ID:			
Name:			Name:			
Street:			Street:			
Town/PC:			Town / PC:			
E-Mail:			E-Mail:			
Phone:			Phone:			
Order Information			User Weight			
Order	Calculation	Built-4-Me®	Max. load capacity: 190 kg			
Purchase Order No.:			User Weight: kg			
Art. No.: 07500-001			Reimbursement Code: xxx			
Order Date:	Day	Month	Year			

Base Price

£ 1,795

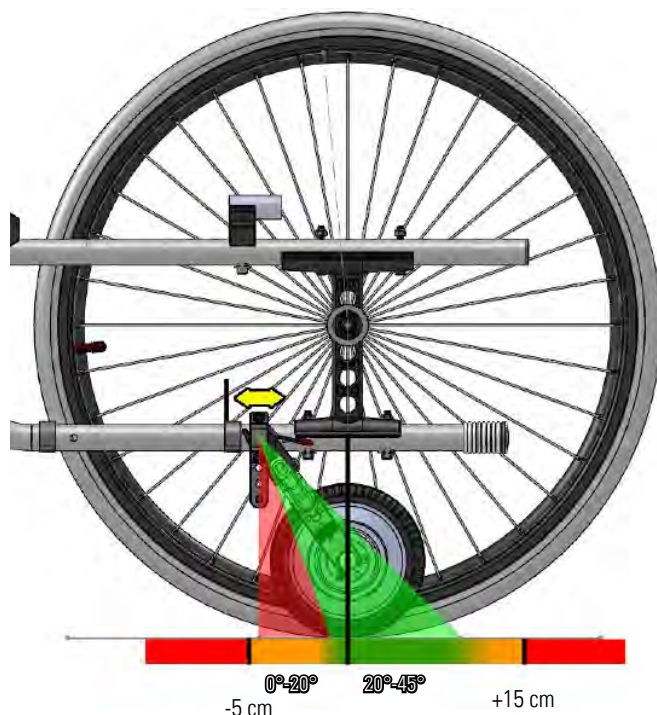
Technical Data Overview

Max. load capacity	190 kg	Max. speed forward	5 km/h (2/3.7/5)
Motor	250 W / 30 Nm	Max. range	15 km*
Protection class motor / display	IP54 / IP65	Max. slope	10° / 18 %
Weight of battery	1.5 kg	Max. user weight	170 kg
Weight of motor and brackets	3 kg	Max kerb climbing	50 mm**
Total weight incl. battery	4.5 kg	Max. motor noise	60 dbA
Total weight excl. battery	3 kg	Charging time (full charge)	Approx. 4-5 hours
Wheelchair seat height range	410 - 510 mm	Battery Lithium Ion	5.8 Ah / 36 V (209 Wh)
Wheelchair seat width range	340 - 600 mm	Charger 100-240 V AC	36 V / 1.35 A

Intended use and environment: For attendants pushing wheelchair users; indoor and outdoor use.

* depending on user weight, topographie

** depending on wheelchair, ground texture, operation



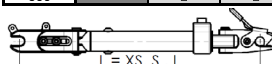
Assembly Breezy X-Family wheelchairs
with Empulse R20



Dockingarm Matrix R20

Sitzhöhe hinten / Rear Seat Height (mm)

	380	390	400	410	420	430	440	450	460	470	480	490	500	510	520	540	560
320						XS	XS	XS	XS	S	S	S	S	S	S	S	S
330						XS	XS	XS	XS	S	S	S	S	S	S	S	S
340					XS	XS	XS	XS	S	S	S	S	S	S	S	S	S
350					XS	XS	XS	XS	S	S	S	S	S	S	S	S	S
360				XS	XS	XS	XS	XS	S	S	S	S	S	S	S	S	S
370				XS	XS	XS	XS	XS	S	S	S	S	S	S	S	S	S
380			XS	XS	XS	XS	XS	S	S	S	S	S	S	S	S	S	S
390			XS	XS	XS	XS	XS	S	S	S	S	S	S	S	S	S	S
400			XS	XS	XS	XS	S	S	S	S	S	S	S	S	S	S	L
410			XS	XS	XS	XS	S	S	S	S	S	S	S	S	S	S	L
420						S	S	S	S	S	S	S	S	S	S	L	L
430						S	S	S	S	S	S	S	S	S	S	L	L
440				S	S	S	S	S	S	L	L	L	L	L	L	L	L
450				S	S	S	S	S	S	L	L	L	L	L	L	L	L
460			S	S	S	S	S	S	L	L	L	L	L	L	L	L	L
470			S	S	S	S	S	S	L	L	L	L	L	L	L	L	L
480		S	S	S	S	S	S	L	L	L	L	L	L	L	L	L	L
490		S	S	S	S	S	S	L	L	L	L	L	L	L	L	L	L
500		S	S	S	S	S	L	L	L	L	L	L	L	L	L	L	L
510		S	S	S	S	S	L	L	L	L	L	L	L	L	L	L	L
520		S	S	L	L	L	L	L	L	L	L	L	L	L	L	L	L
530		S	S	L	L	L	L	L	L	L	L	L	L	L	L	L	L
540		S	S	L	L	L	L	L	L	L	L	L	L	L	L	L	L
550		S	S	L	L	L	L	L	L	L	L	L	L	L	L	L	L
560		S	S	L	L	L	L	L	L	L	L	L	L	L	L	L	L
570		S	S	L	L	L	L	L	L	L	L	L	L	L	L	L	L
580		S	S	L	L	L	L	L	L	L	L	L	L	L	L	L	L
590		S	S	L	L	L	L	L	L	L	L	L	L	L	L	L	L
600		L	L	L	L	L	L	L	L	L	L	L	L	L	L	L	L



XS = 206 mm
S = 236 mm
L = 276 mm

R20 Standard Spec Stocked In The UK - 5 Day Lead Time

Each of the 4 configurations are stocked in the UK for fast shipment, please refer to the sizing matrix

Docking Arms	Part Number	RRP	Order Quantity
XS (Max RSH 46 - Max SW 41)	07500001-001045	£1,795	
S (Max RSH 56 - Max SW 59)	07500001-001044	£1,795	
L (Max RSH 56 - Max SW 60)	07500001-001043	£1,795	
IBIS Docking Arms	07500001-002626	£1,795	

R20 Configured Spec - 10-15 Day lead time

R20

£

07500000 **R20** incl. battery, controller, user interface and charger

1,795

R20 Mounting ⁽¹⁾

EMR000034	UniX ²	EMR000048	Emineo	EMR000057	Premium	EMR000146	Neon ²
EMR000035	PariX ²	EMR000050	Cirrus G5	EMR000058	Style	Competitor models	
EMR000036	BasiX ²	EMR000051	Cirrus G5 Base	EMR000059	Style X/X-Ultra	EMR010039	Frametube diameter 22-28 mm
EMR000037	RubiX ²	EMR000052	Ibis (Oct. 2019)	EMR000055	Life Eco	EMR010043	Frametube diameter 29-32 mm
EMR000038	HeliX ²	EMR000049	Exigo	EMR000056	Life i		
EMR000039	HeliX ² Comfort	EMR000053	Uni	EMR000108	Life, R, T, RT		
EMR000047	RelaX ²	EMR000054	HD	EMR000129	Easy 200 / 300		

Seat Width

SW32	320 mm	SW40	400 mm	SW48	480 mm	SW56	560 mm
SW33	330 mm	SW41	410 mm	SW49	490 mm	SW57	570 mm
SW34	340 mm	SW42	420 mm	SW50	500 mm	SW58	580 mm
SW35	350 mm	SW43	430 mm	SW51	510 mm	SW59	590 mm
SW36	360 mm	SW44	440 mm	SW52	520 mm	SW60	600 mm
SW37	370 mm	SW45	450 mm	SW53	530 mm		
SW38	380 mm	SW46	460 mm	SW54	540 mm		
SW39	390 mm	SW47	470 mm	SW55	550 mm		

Rear Seat Height

RSH39	390 mm	RSH43	430 mm	RSH47	470 mm	RSH51	510 mm
RSH40	400 mm	RSH44	440 mm	RSH48	480 mm	RSH52	520 mm
RSH41	410 mm	RSH45	450 mm	RSH49	490 mm		
RSH42	420 mm	RSH46	460 mm	RSH50	500 mm		

Order Process Information

EMR090214	With wheelchair order	—
EMR090213	Without wheelchair order	—

Accessories

£

EMR090074	Front and rear light	35
EMR090162	Additional battery, Lithium-Ion, 5.8 Ah	335

(1) Choose applicable wheelchair model, seat width and rear seat height. For box frame products (frame tube diameter 22-28 mm), standard push handles only

Comments

R20

£

Base Price	1,765
Total Of Additional Equipment	
Packaging And Transport	
Exclusive VAT	
VAT	
Total Price	

Date

Signature

Day Month Year

**Sunrise Medical**

Thorns Road
 Brierley Hill
 Phone: 01384 421 500
 E-Mail: enquiries@sunmed.co.uk
www.SunriseMedical.co.uk