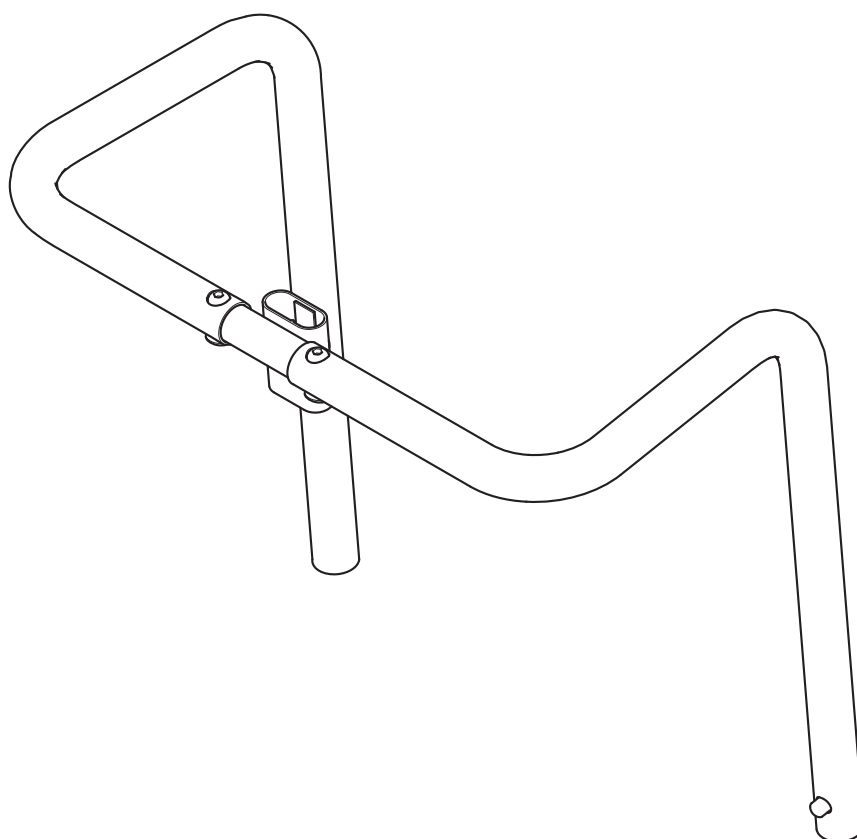


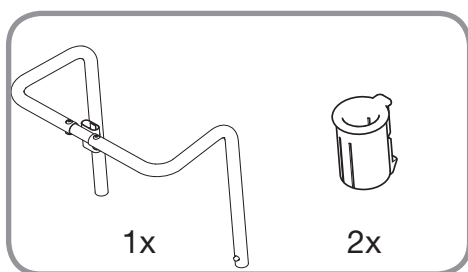
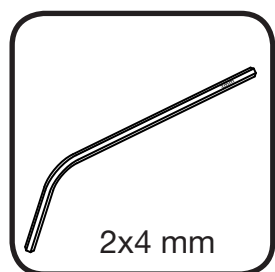
ASSEMBLY INSTRUCTION

Push bar with headrest junction

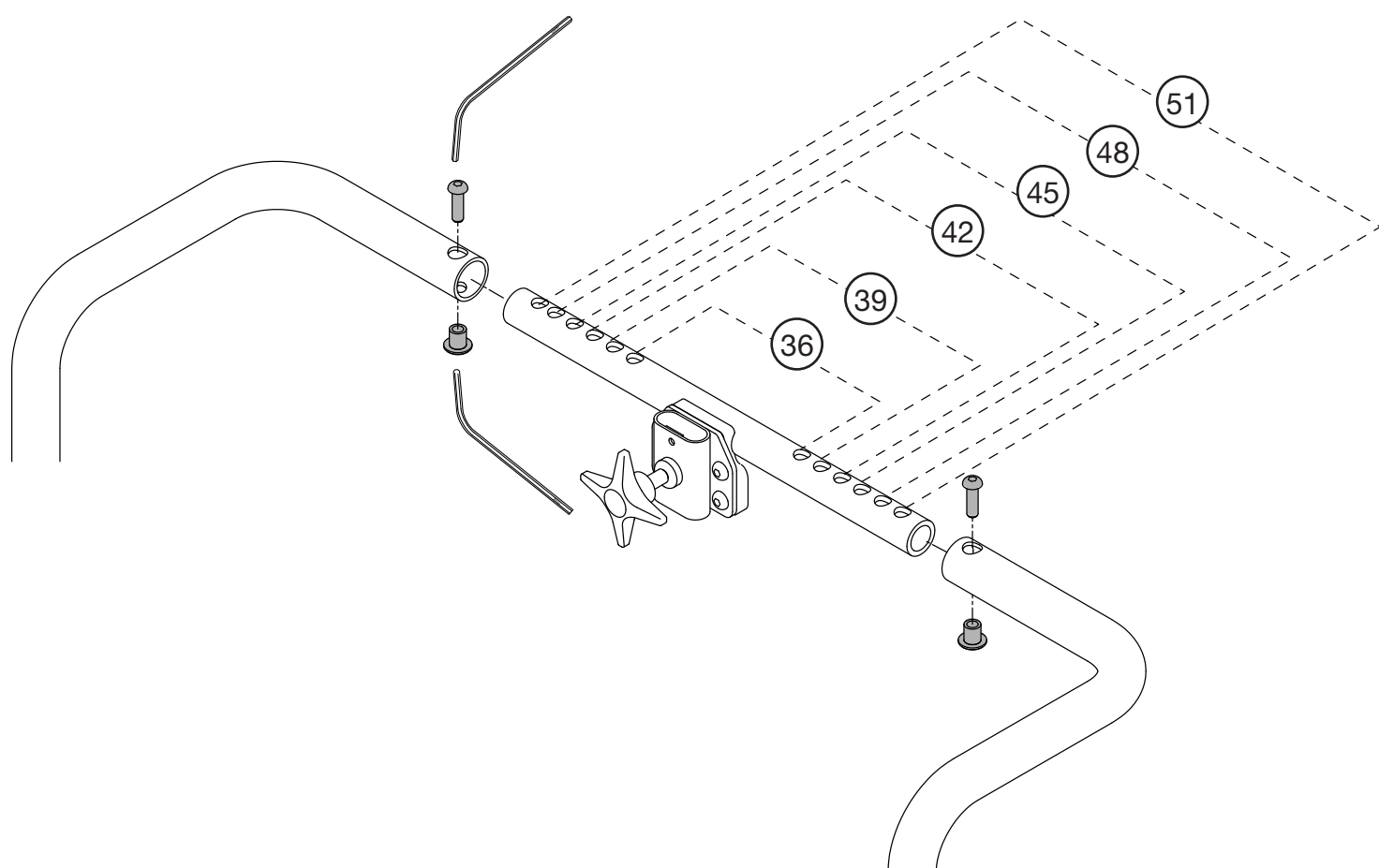


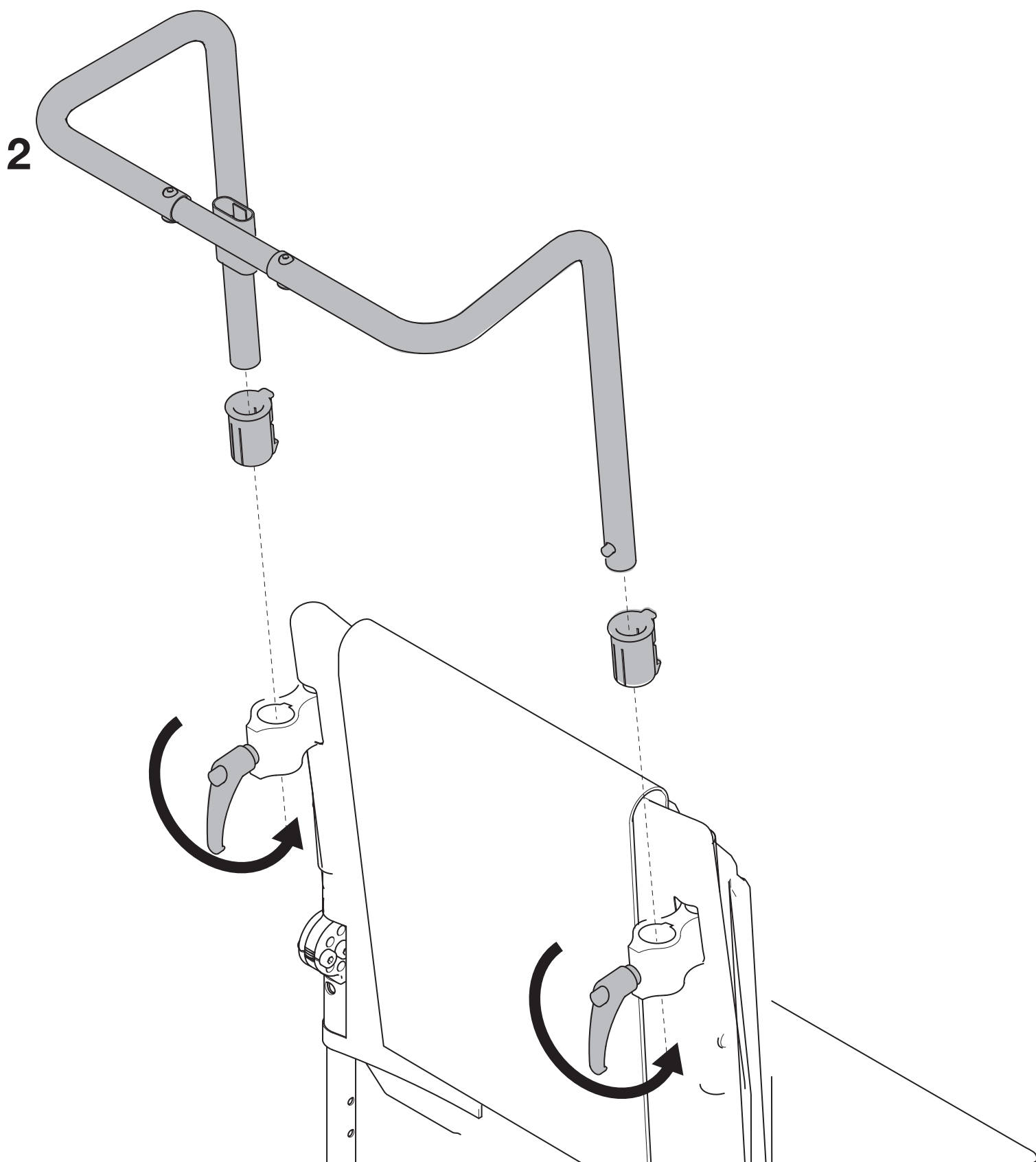
Description	Article number
Push bar with headrest junction SW 36 - 51	3305911



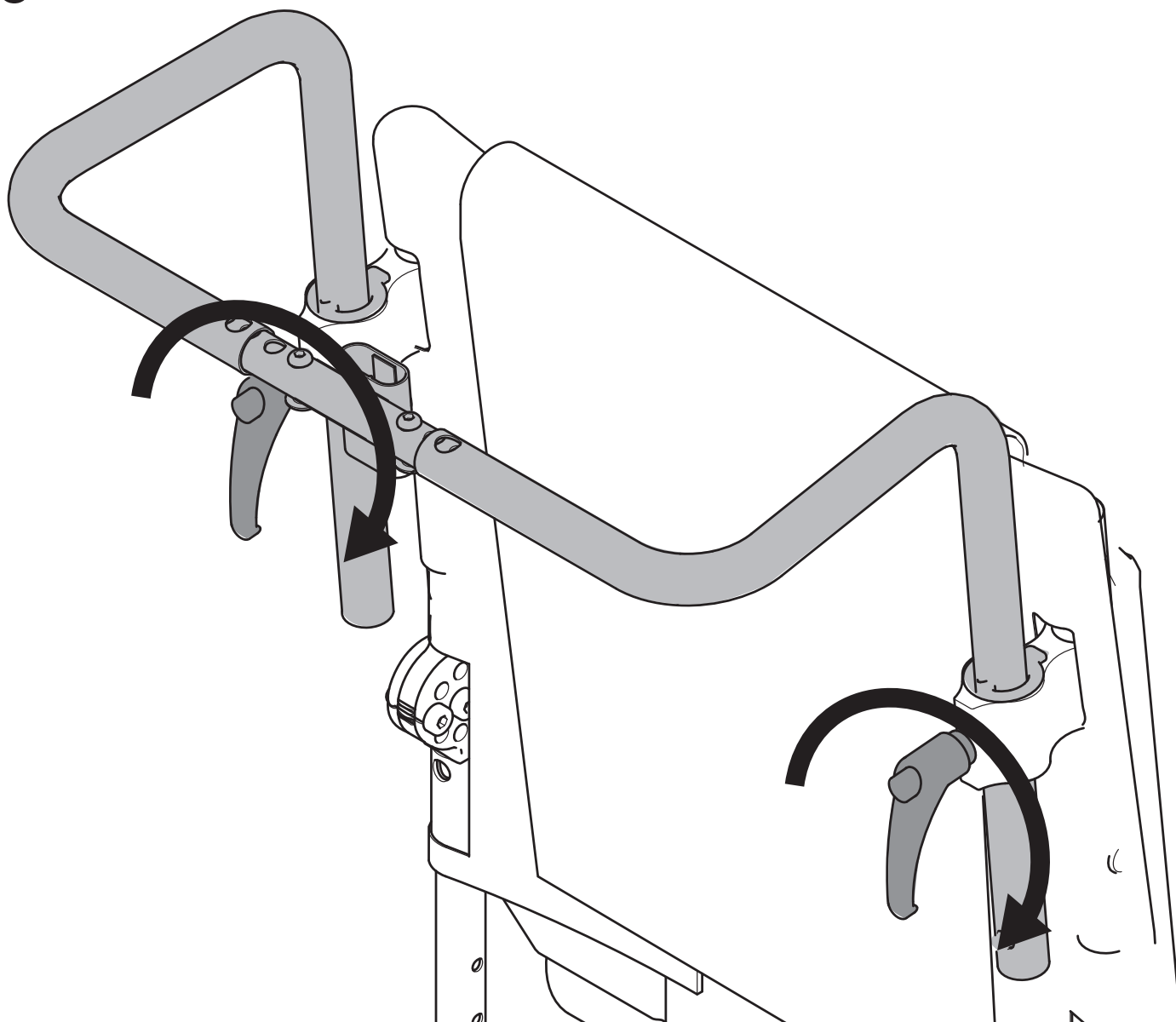


1





3



Sunrise Medical HCM B.V.
Vossenbeemd 104
5705 CL Helmond
The Netherlands

T: +31 (0)492 593 888
customerservice@sunrisemedical.nl
www.SunriseMedical.eu