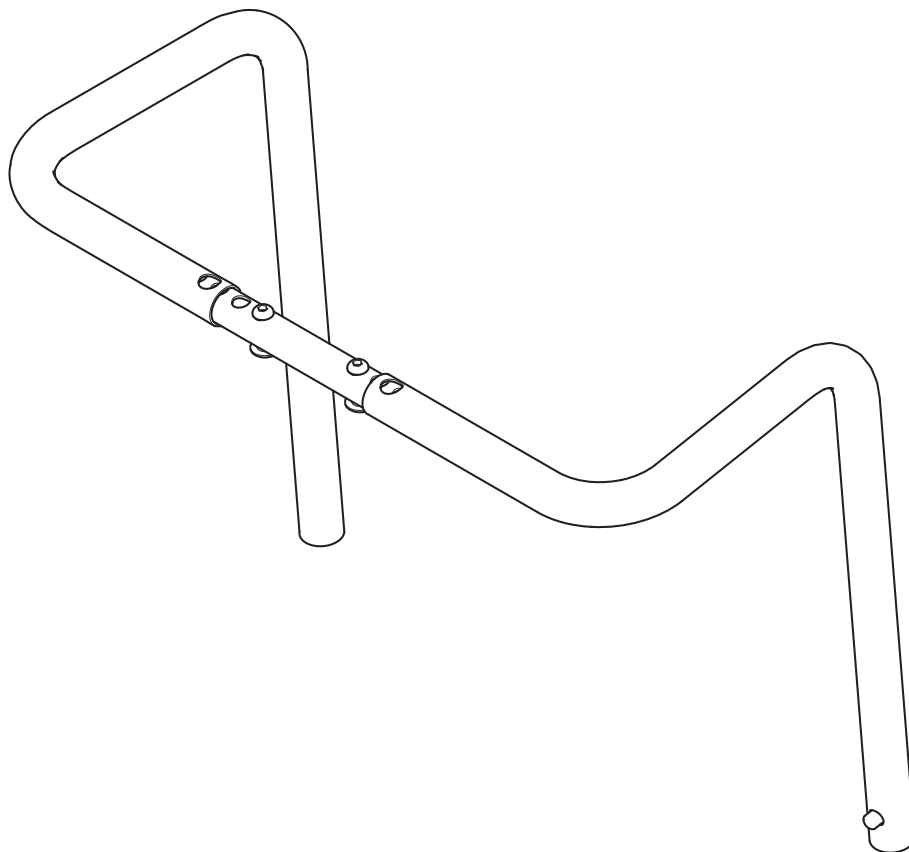


ASSEMBLY INSTRUCTION

Push bar



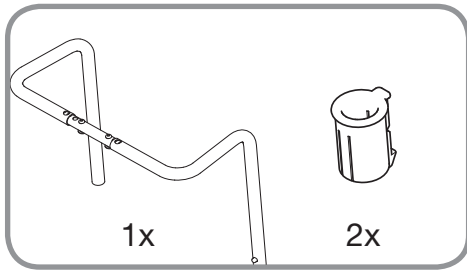
Description

Push bar SW 36 - 51

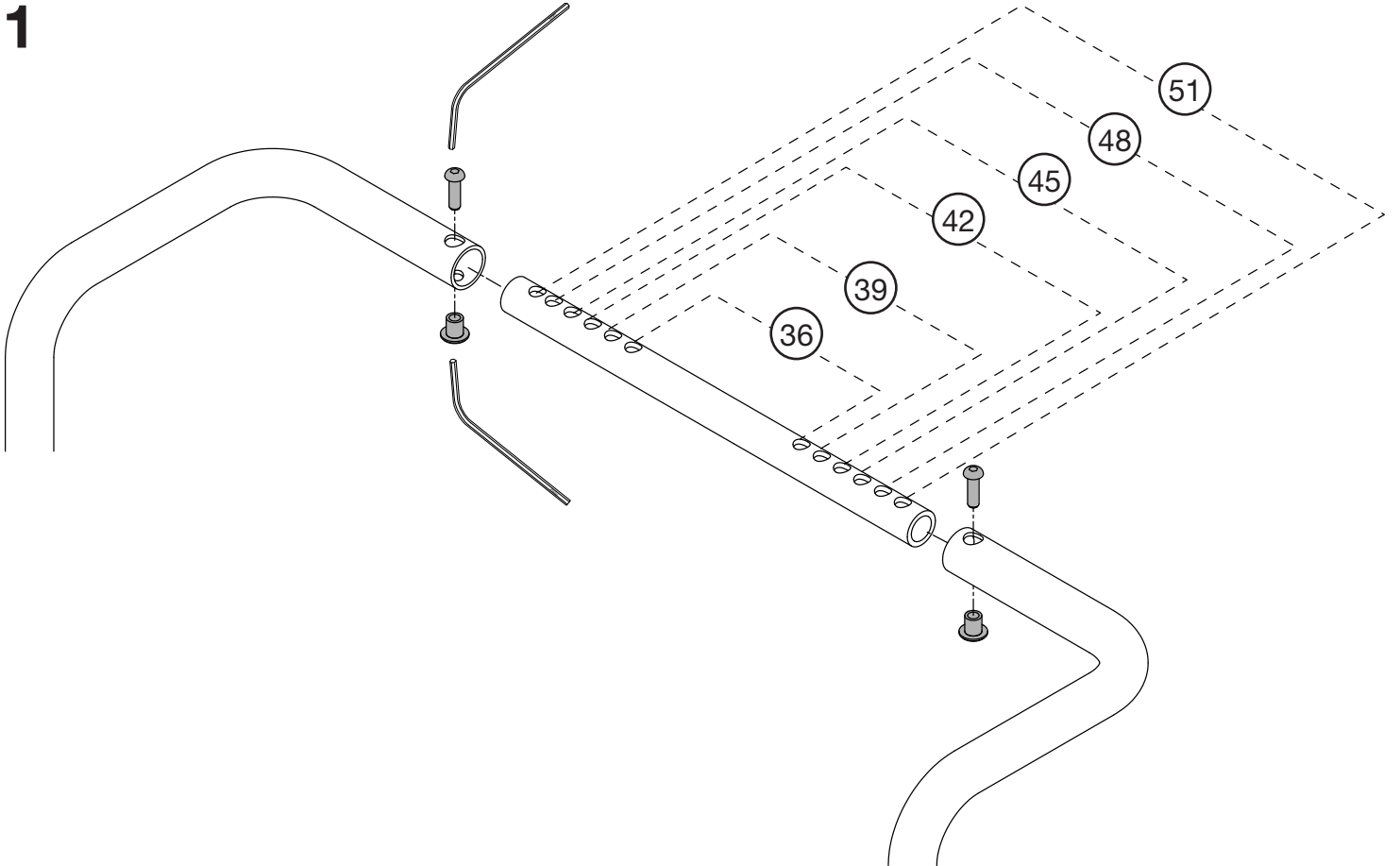
Article number

3305901

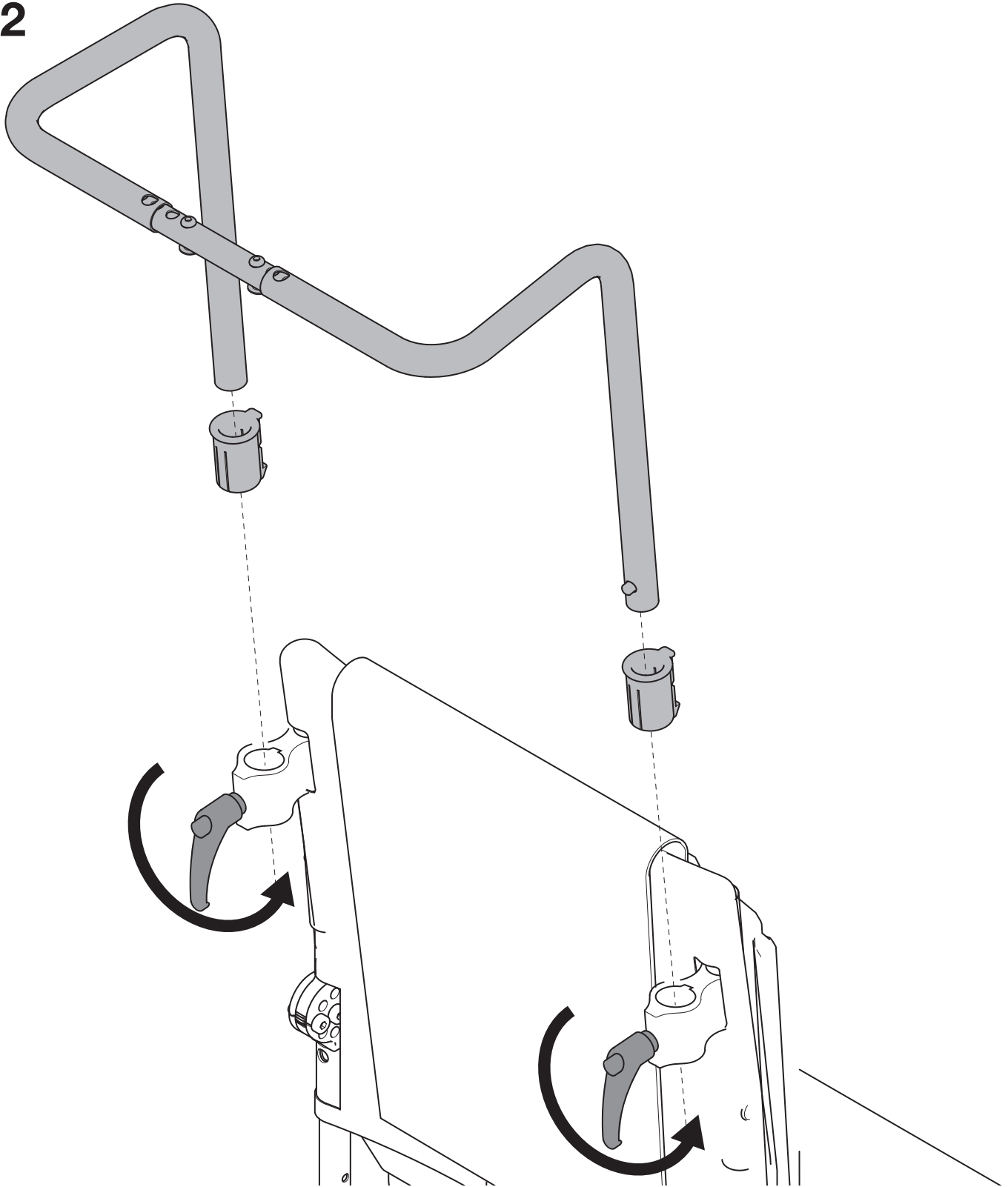




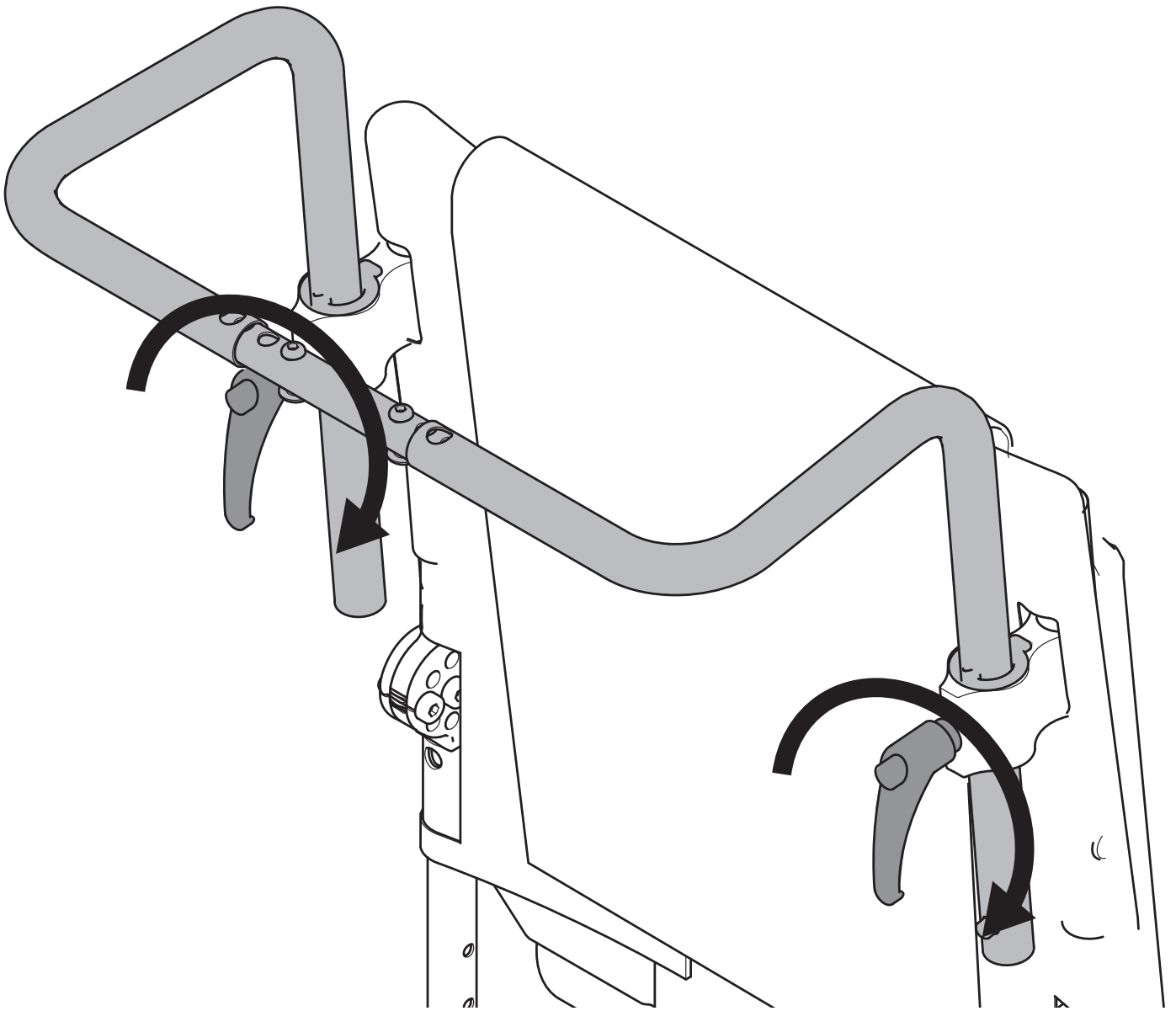
1



2



3



Sunrise Medical HCM B.V.
Vossenbeemd 104
5705 CL Helmond
The Netherlands

T: +31 (0)492 593 888
customerservice@sunrisemedical.nl
www.SunriseMedical.eu