



Deliver to:
Name:
Street:
Town: Postal code:
E-Mail:
Tel: Fax:



Deliver to:
Name:
Street:
Town: Postal code:
E-Mail:
Tel: Fax:

Order date:
Purchase order:
Number required:

Marked for:
Sunrise order no:

☐ Order ☐ Calculation ☐ Built 4 me

Art. no.: 82000001

• = Standard ☐ = Cost option
./ = Price reduction ☐ = No cost option
Customer service fax number: +497253 980-222
Max. user weight: 125 kg
USER WEIGHT kg
Mandatory information to ensure correct configuration

Base Price

BASIC MODEL

- Seat depth is adjustable from 37.5 cm to 45 cm
- Patented Rotation-In-Space Wheelchair Technology - controlled tilting in a range of 45° (-5° bis 40°)
- Angle adjustable back
- Rear wheel (16", 22", 24") with drum break
- Push bar, angle- and height adjustable

CLIENT MEASUREMENTS (all measurements without cushion)

SEAT DEPTH SELECTION - only factory setting selection;
all seat depths are adjustable from 37,5 - 45 cm

<input type="radio"/>	Seat depth 37,5 cm	SD375
<input type="radio"/>	Seat depth 40,0 cm	SD40
<input type="radio"/>	Seat depth 42,5 cm	SD425
<input type="radio"/>	Seat depth 45,0 cm	SD45

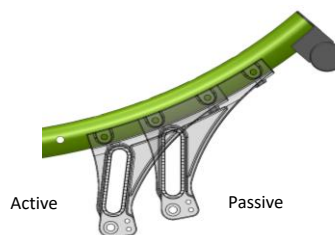
SEAT WIDTH -
measured from outside frame tube to outside frame tube

<input type="radio"/>	Seat width 30 cm	ZRS010104
<input type="radio"/>	Seat width 35 cm	ZRS010105
<input type="radio"/>	Seat width 40 cm	ZRS010106

SEAT HEIGHT SELECTION - in dependance of front castor, rear wheel and center of gravity

Front Castor	Rear Wheel	Center of Gravity	Seat Height in cm									
			43	44	45	46	47	48	49	50	51	52
6"	16"	Active	<input type="radio"/>	<input type="radio"/>	<input type="radio"/>	<input type="radio"/>	<input type="radio"/>	<input type="radio"/>	<input type="radio"/>	<input type="radio"/>	<input type="radio"/>	<input type="radio"/>
	22"		<input type="radio"/>	<input type="radio"/>	<input type="radio"/>	<input type="radio"/>	<input type="radio"/>	<input type="radio"/>	<input type="radio"/>	<input type="radio"/>	<input type="radio"/>	<input type="radio"/>
	24"		<input type="radio"/>	<input type="radio"/>	<input type="radio"/>	<input type="radio"/>	<input type="radio"/>	<input type="radio"/>	<input type="radio"/>	<input type="radio"/>	<input type="radio"/>	<input type="radio"/>
6"	16"	Passive	<input type="radio"/>	<input type="radio"/>	<input type="radio"/>	<input type="radio"/>	<input type="radio"/>	<input type="radio"/>	<input type="radio"/>	<input type="radio"/>	<input type="radio"/>	<input type="radio"/>
	22"		<input type="radio"/>	<input type="radio"/>	<input type="radio"/>	<input type="radio"/>	<input type="radio"/>	<input type="radio"/>	<input type="radio"/>	<input type="radio"/>	<input type="radio"/>	<input type="radio"/>
	24"		<input type="radio"/>	<input type="radio"/>	<input type="radio"/>	<input type="radio"/>	<input type="radio"/>	<input type="radio"/>	<input type="radio"/>	<input type="radio"/>	<input type="radio"/>	<input type="radio"/>
7"	16"	Active	<input type="radio"/>	<input type="radio"/>	<input type="radio"/>	<input type="radio"/>	<input type="radio"/>	<input type="radio"/>	<input type="radio"/>	<input type="radio"/>	<input type="radio"/>	<input type="radio"/>
	22"		<input type="radio"/>	<input type="radio"/>	<input type="radio"/>	<input type="radio"/>	<input type="radio"/>	<input type="radio"/>	<input type="radio"/>	<input type="radio"/>	<input type="radio"/>	<input type="radio"/>
	24"		<input type="radio"/>	<input type="radio"/>	<input type="radio"/>	<input type="radio"/>	<input type="radio"/>	<input type="radio"/>	<input type="radio"/>	<input type="radio"/>	<input type="radio"/>	<input type="radio"/>
7"	16"	Passive	<input type="radio"/>	<input type="radio"/>	<input type="radio"/>	<input type="radio"/>	<input type="radio"/>	<input type="radio"/>	<input type="radio"/>	<input type="radio"/>	<input type="radio"/>	<input type="radio"/>
	22"		<input type="radio"/>	<input type="radio"/>	<input type="radio"/>	<input type="radio"/>	<input type="radio"/>	<input type="radio"/>	<input type="radio"/>	<input type="radio"/>	<input type="radio"/>	<input type="radio"/>
	24"		<input type="radio"/>	<input type="radio"/>	<input type="radio"/>	<input type="radio"/>	<input type="radio"/>	<input type="radio"/>	<input type="radio"/>	<input type="radio"/>	<input type="radio"/>	<input type="radio"/>
8"	16"	Active	<input type="radio"/>	<input type="radio"/>	<input type="radio"/>	<input type="radio"/>	<input type="radio"/>	<input type="radio"/>	<input type="radio"/>	<input type="radio"/>	<input type="radio"/>	<input type="radio"/>
	22"		<input type="radio"/>	<input type="radio"/>	<input type="radio"/>	<input type="radio"/>	<input type="radio"/>	<input type="radio"/>	<input type="radio"/>	<input type="radio"/>	<input type="radio"/>	<input type="radio"/>
	24"		<input type="radio"/>	<input type="radio"/>	<input type="radio"/>	<input type="radio"/>	<input type="radio"/>	<input type="radio"/>	<input type="radio"/>	<input type="radio"/>	<input type="radio"/>	<input type="radio"/>
8"	16"	Passive	<input type="radio"/>	<input type="radio"/>	<input type="radio"/>	<input type="radio"/>	<input type="radio"/>	<input type="radio"/>	<input type="radio"/>	<input type="radio"/>	<input type="radio"/>	<input type="radio"/>
	22"		<input type="radio"/>	<input type="radio"/>	<input type="radio"/>	<input type="radio"/>	<input type="radio"/>	<input type="radio"/>	<input type="radio"/>	<input type="radio"/>	<input type="radio"/>	<input type="radio"/>
	24"		<input type="radio"/>	<input type="radio"/>	<input type="radio"/>	<input type="radio"/>	<input type="radio"/>	<input type="radio"/>	<input type="radio"/>	<input type="radio"/>	<input type="radio"/>	<input type="radio"/>

Center of Gravity (CoG)



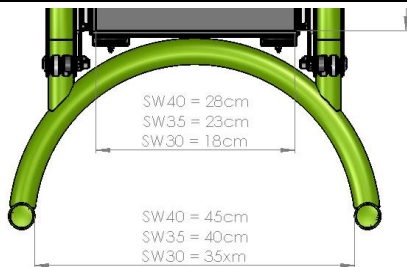
Active:

- easy to push & to tip
- short wheelbase

Passive:

- tip resistant
- longer wheelbase

For more information
visit our webpage
www.SunriseMedical.eu
© Sunrise Medical 2025



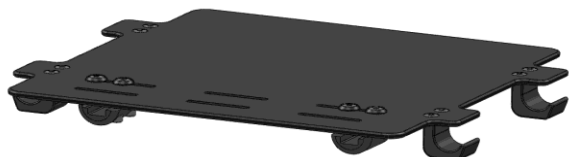
Chair dimensions



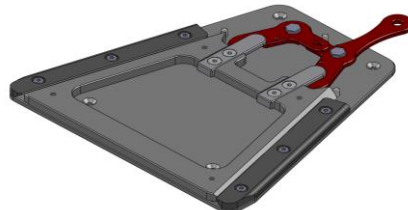
16" rear wheel with drum break, solid



22", 24" rear wheel with drum break, 36 spokes (silver), cross-wise spokes



Base plate



Trapezoid adapter complete



Right Run



Marathon Plus



Solid



Aluminium silver anodized



Coloured Aluminum pushrim



Maxgrepp

Technical Data Overview:

Max. overall height: 80 - 145 cm

Max. overall length: 90 - 145 cm

Max. overall width: 53 - 63 cm

Max. turning circle: 750 mm

Max. safe slope: 10°

Chair weight: from 18 kg

Dismantled weight: 14 - 22 kg

Weight of heaviest part: 2,1 kg

Product is **crash tested according to ISO 7176-19** and therefore approved for transportation in a vehicle

For transport without a user the chair must be safely clamped in the vehicle

All changes in the configuration might change the seat heights.

Manufacturing tolerances of +/- 1 cm

Zippie RS

● = Standard ○ = No cost option □ = Cost option

Price in €

SEAT

ZRS020109	●	Seat plate		
ZRS020151	□	Trapezoid adapter complete, aluminium (L: 30cm; W (front): 28cm; W (back): 14cm) (not mounted)		
ZRS090018	□	Positioning belt (not mounted)		

JAY Cushions - for complete product range see Jay order forms:

JAY020002	□	JAY Basic (not with Trapezoid adapter)		
JAY020003	□	JAY Soft Combi P (not with Trapezoid adapter)		
JAY020001	□	JAY Easy Visco (not with Trapezoid adapter)		

CASTOR TYRES

ZRS080301	○	Solid		
ZRS080302	○	Soft solid (only 6")		
ZRS080305	○	Pneumatic		

REAR WHEEL TYRES

ZRS070102	○	Solid		
ZRS070101	○	Right Run (pneumatic) (only 22"/24")		
ZRS070104	□	Marathon plus evolution (pneumatic) (only 24")		

HANDRIMS

ZRS070202	○	Aluminium silver anodized (only 22"/24")		
ZRS070201	○	Aluminium clear powdercoated (only 22"/24")		
ZRS070203	□	Aluminium colour powdercoated (only 22"/24")		
ZRS070208	□	Maxgrepp (only 22"/24")		
ZRS070317	●	Handrim mounting close 17mm (not with 16" rear wheel)		

WHEEL LOCKS

ZRS070008	●	Drumbrake wheel		
ZRS060008	□	Kneelever wheel lock with extention tubes (in addition to drum break, only 22"/24")		

SPOKE GUARDS

(only 22" / 24")

ZRS070831	□	Transparent		
		ZRS070813 □ Galactica		
ZRS070823	□	Princess	ZRS070818 □ Jungle Fever	
ZRS070816	□	Happy Lions	ZRS070811 □ Feather	
ZRS070819	□	Monkeys	ZRS070821 □ Pirates	
ZRS070820	□	Oriental	ZRS070806 □ Chrome Wheel	
ZRS070829	□	Superhero	ZRS070814 □ Graffiti	
ZRS070817	□	Hot Wheels	ZRS070802 □ Basketball	
ZRS070822	□	Pool	ZRS070812 □ Flying Water	ZRS070828 □ Space
ZRS070827	□	Silk	ZRS070803 □ Basketball 2	
ZRS070830	□	Tiger	ZRS070833 □ Zebra (see spokeguard brochure)	

For more information
visit our webpage
www.SunriseMedical.eu
© Sunrise Medical 2025



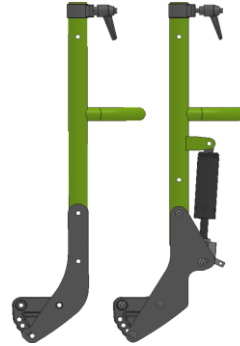
Fender sideguard



Push Bar angle adjustable



Backrest fixation, sliding

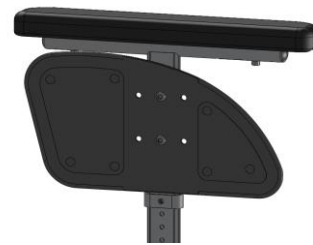


Angle adj. Back

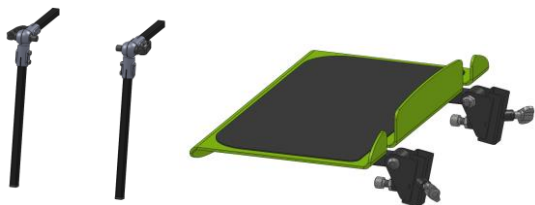
Reclining back



Headrest



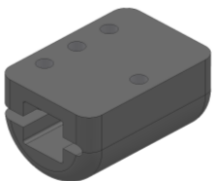
Single post tool height & depth adjustable (33cm)



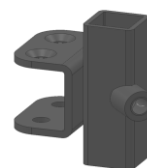
Platform footrest, adjustable foot angle, flip up with heel stop



Divided footplates, aluminium (frame colour)



Square welded receiver for own footrest



Square welded receiver for own sideguard



Elevating legrest



Square welded receiver for own headrest

Zippie RS

● = Standard ○ = No cost option □ = Cost option

Price in €

SIDEGUARDS

ZRS040000	●	w/o sideguard	
ZRS040109	□	Fender sideguard	(not in combination with single post sideguard; square welded receiver or 16" wheels)
ZRS040052	□	Single post tool height & depth adjustable (33 cm)	(not with fender sideguard; square welded receiver; SD 37,5 cm)
Square welded receiver for third party armrest			(15 x 15 mm; black)
ZRS040124	□	mounted	ZRS040125 □ not mounted

PUSH BAR

ZRS030206	●	Push bar, angle- and height adjustable	
-----------	---	--	--

BACKRESTS

ZRS030012	●	Angle adjustable back	(90° - 120°; SD45 only 90°-110°)									
ZRS030526	●	90°	ZRS030527	○	95°	ZRS030528	○	100°				
ZRS030529	○	105°	ZRS030531	○	110°	ZRS030532	○	115°	ZRS030533	○	120°	
ZRS030014	□	Reclining back	(90° - 120° ; changeable also to 85° - 115°)									
ZRS030105	□	Backrest fixation, sliding	(not in combination with Jay J3 back & back panel)									
ZRS030305	□	Back panel	(not in combination with Jay J3 backs)									
ZRS030418	□	Headrest	(incl. receiver; not mounted; not in combination with Jay J3 backs)									
ZRS030420	□	Square welded receiver for third party headrest	(15 x 15 mm; balck; not mounted)									

JAY J3 BACKS plus ACCESSORIES - for complete product range see Jay order forms

Jay J3 Back - Mid Contour (MC)

Mid Thoracic (MT):	<input type="checkbox"/>	JAY030011	Medium - 34 cm	<input type="checkbox"/>	JAY030018	Tall - 38 cm				
Upper Thoracic (UT):	<input type="checkbox"/>	JAY030013	Short - 42 cm	<input type="checkbox"/>	JAY030020	Medium - 46 cm (1)	<input type="checkbox"/>	JAY030026	Tall - 50 cm (1)	
Shoulder Height (SH):	<input type="checkbox"/>	JAY030016	Short - 53 cm (1)	<input type="checkbox"/>	JAY030023	Medium - 57 cm (2)				

Jay J3 Back - Deep Contour (DC)

Upper Thoracic (UT):	□	JAY030014	Short - 42 cm (1)	□	JAY030021	Medium - 46 cm (1)	□	JAY030027	Tall - 50 cm (1)	
Shoulder Height (SH):	□	JAY030017	Short - 53 cm (1)	□	JAY030024	Medium - 57 cm (2)				

Jay J3 Back Headrests

WHT030415	□	Whitmyer Headrest, COBRA XTRA, flip back, Plush pad 250 mm (only with JAY J3 backs)	
WHT030416	□	Whitmyer Headrest, AXYS, Standard, Plush pad 250 mm (only with JAY J3 backs)	

LEGRESTS & FOOTPLATES

ZRS050000	●	w/o legrest			
Elevating legrest					
ZRS050009	<input type="checkbox"/>	Left	ZRS050010	<input type="checkbox"/> Right	(other side aluminium hanger; incl. 7 cm abduction)
ZRS050011	<input type="checkbox"/>	Pair	(7 cm abduction each side)		
Aluminium hanger 80°					
ZRS050006	<input type="checkbox"/>	Left	ZRS050007	<input type="checkbox"/> Right	(incl. 7 cm abduction)
ZRS050008	<input type="checkbox"/>	Pair	(7 cm abduction each side)		
Footplates					
ZRS050022	<input type="checkbox"/>	Aluminium divided (frame colour)			(angle- & depth adjustable)
ZRS050020	<input type="checkbox"/>	Composite divided (black)			(angle adjustable)
ZRS050045	<input type="checkbox"/>	Platform footrest, knee angle adj. & footplate angle adj., aluminum; flip up with heel stop (frame colour; square welded tube black 15 x 15mm)			
Square welded receiver for third party footrest					(15 x 15mm, black)
ZRS050046	<input type="checkbox"/>	mounted	(only in combination with seat plate)	ZRS050047	<input type="checkbox"/> not mounted

(1) Only SW 35 & 40 cm
(2) Only SW 40 cm

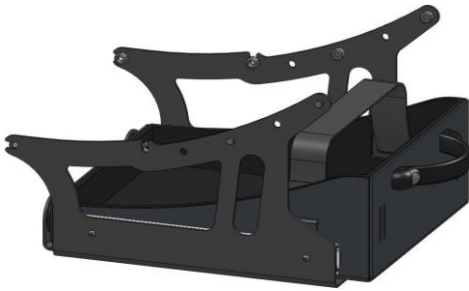
For more information
visit our webpage
www.SunriseMedical.eu
© Sunrise Medical 2025



Tip assist (step tube)

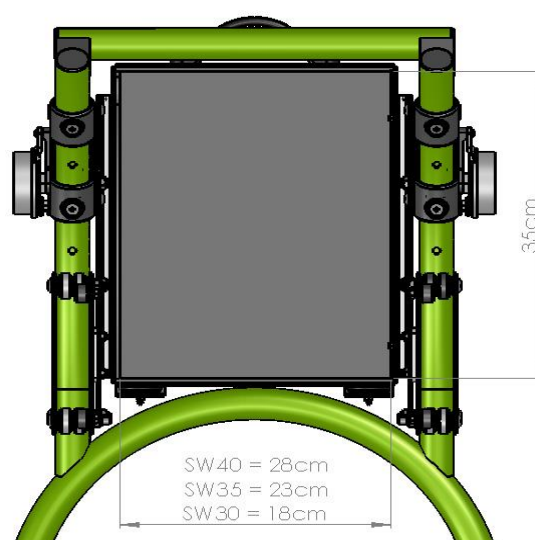
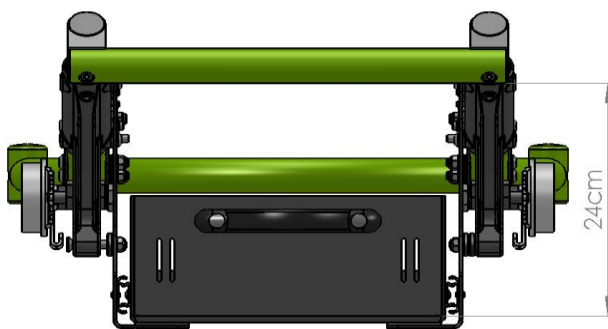


Anti tip tube, flip up



Accessory box

Dimensions of accessory box



Zippie RS

● = Standard ○ = No cost option □ = Cost option

Price in €

ACCESSORIES

ZRS090000	●	Tool Kit		
	□	Tip assist (step tube)		
ZRS090001	□	Left	ZRS90002	□ Right
ZRS090003	□	Pair		(not in combination with anti-tip tubes)
	□	Anti-tip tube, flip up		
ZRS090042	□	Left	ZRS090043	□ Right
ZRS090044	□	Pair		(not in combination with tip assist)
ZRS090070	□	Accessory box		(only in combination with anti-tip tube; max. load 13 kg)
ZRS090011	□	Tray slide on		(only SW 40, only in combination with single post sideguard)

COLOURS

	Frame	Handrim (1)		Frame	Handrim (1)
02 Brilliant Silver	○	□	27 Graphitemetallic	□	□
03 Silver Matt	□	□	29 Black	○	□
06 Sun Yellow	□	□	31 Matt Black	□	□
14 Blue	□	□	32 Signal White	□	□
15 Brilliant Marine	□	□	33 Pink	□	□
16 Matt Marine	○	□	34 Dark Chocolate Metallic	○	□
19 Brilliant Purple	□	□	35 Skyblue	□	□
21 Red Ruby	□	□	36 Cyan-Metallic	○	□
22 Brilliant Red	□	□	37 Marsred (Orange)	○	□
23 Matt Red	○	□	40 Kiwi	□	□
24 Tutti Frutti Orange	□	□	41 Flamingo-Glitter	□	□
			42 Matt-Anthracite	○	□
			46 Mamba Green (new)	○	□

(1) Handrim: only with handrim colour powder coated

Comments for special build:



Zippie RS - Base Price

Option price	
Packaging and transport	
Exclusive VAT	
VAT.	
Total Price	

Sunrise Medical Customer service

Address: Ul. Walczaka 114a,66 400, Gorsaw, Gorzów Wlkp. Polen

Tel. +48 95 737 25 14

E-mail: cs.pl@sunrise-medical.pl

Website: sunrisemedical.eu



www.SunriseMedical.eu

© Sunrise Medical 2025