

Q100 R



Rev:02/2024
Valid:12/2024

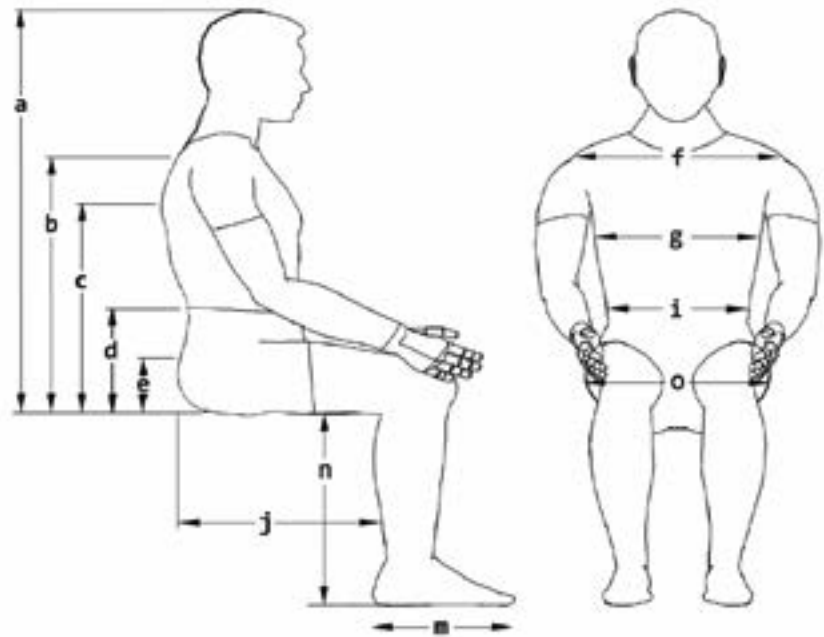
ORDER FORM

Errors and imissions excepted.

Billing Address Or Customer-ID			Shipping Address	Identical To Billing Address
C.-ID:			C.-ID:	
Name:			Name:	
Street:			Street:	
Town/PC:			Town/PC:	
E-Mail:			E-Mail:	
Phone:			Phone:	
Order Information			User Weight	
Order	Calculation	Built-4-Me®	User Weight Capacity: 125 kg	
Purchase Order No.:			User Weight: kg	
Art. No.: XXXXXXXX-XXX		Reimbursement Code: xxx	Base Price € X.XXX-	
Order Date:	Day	Month		

Client Measurements

a) Top Of Head To Seat	mm
b) Top Of Shoulder To Seat	mm
c) Underarm To Seat	mm
d) Elbow To Seat	mm
e) Top Of Pelvis To Seat	mm
f) Shoulder Width	mm
g) Trunk Width	mm
i) Hip Width	mm
j) Actual Sitting Depth	mm
m) Foot Length	mm
n) Lower Leg Length	mm
o) Actual Seat Width	mm



Seating Specifications

		Seat Type	Sling Seat And Sling Back
Typical WC Weight	Without Batteries 60 kg	Seat Size Range	Width 430 + 70 mm (Outward Via Armrest)
	With Batteries 94 kg		Depth 410 mm To 510 mm, 4 Steps 25 mm
		Seat To Floor Height	470 mm Seat Angle 3° (Without Cushion)
		Seat Angel adjustable	0°, 3°, 6°
		Backrest Angel Adjustable	90°, 94°, 98° and 102°
		Seat Cushion	Standar 50 mm
		Fold down backrest with Quick Release and detachable Armrest and Footrest	

RWD Base Specifications

Drive Wheel Position	Rearwheel Drive	Drive Wheels	12" Drive Wheels, Flat Free Solid Insert (Black Non-Marking)
User Weight Capacity	125 kg	Tires / Castors	8" Solid (Black Non-Marking)
Base Size	Width 540 mm, Length 1 m, Turning Radius 0.8 m	Charger	8 A
Drive Control	VR2 60 A (RN)	Battery Size	55 Ah Batteries
Driving Range	31 km	Colour Accents	Red, Blue, Green (Decals / Wheel Clip Kit)
Drive Motors	200 W 6 kph	Ground Clearance	90 mm

Base**Q100 Chair**

€

2600100 **Q100 R (RWD Base Chair)** With Drive Wheel Suspension, Anti-Tips, ISO Transit Package**Motor Package**

€

2-Pole Motor, 6 kph (4 mph), Power 200 W

Drive Wheels 

€

Drive Wheel, 12", Solid, Knobbly, Black, Non-Marking

Castor Wheels 

€

Castor Wheels, 8", Solid, Black, Non-Marking

Kerb Climber 

€

22609030 Kerb Climber Kit Q100 R (Dealer Fit)

Frame Colour

€

Black

Colour Accents

€

22609050-001 Red (RAL 040 40 67)

22609050-002 Apple Green (RAL 110 70 77)

22609050-003 Blue (RAL 260 40 45)

Seat Height (Measured To Top Of Seat Sling)

€

STFH 470 mm (18.5"), 3° Seat Angle

Pre-Set Seat Angle

€

3° (Adjustable 0°, 3°, 6°)

Seating

Backrest Frame Type

Angle-Adjustable Back 90°, 94°, 98°, 102° (1)

Backrest

Backrest Sling, Tension Adjustable Straps

Sling Backrest Width Setting

Sling Backrest Width, 430 mm

Sling Backrest Height Setting

Sling Backrest Width, 500 mm

Seat Type

Seat Sling

Seat Cushion Type

Seat Cushion, Standard, 50 mm

Seat Size

Seat Width

Seat Width, 430 mm + 70 mm, Width-Adjustable Via Armrest Outward Adjustment

Seat Depth

Seat Depth, 460 mm Standard Setting, Adjustable, 410 mm To 510 mm, 4 Steps - 25 mm

Armrest Type

Armrest, Single Post, Height-Adjustable, Removeable

Arm Pads

Arm Pad, Integral Foam, Depth-Adjustable, 380 mm

Side Guards

Side Guard, Depth-Adjustable

Swing Away Legrest

Legrest, New UNI, 80°, Swing Away

Swing Away Legrest Options

Footplate

Heel Loops

Positioning Supports & Accessories

22609020 Seat Height Adjustments Kit, Seat Height Increase mm

(1) Fold Down And Quick Release

Joysticks / Electronics – VR2

Remote Joystick – VR2

€

Remote Joystick, VR2	
----------------------	--

Joystick Mounting

Joystick Mounting, Parallel, Swing Away (1)	
---	--

Joystick Mounting Location

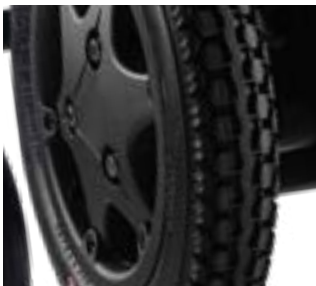
Joystick Mounting Location, Armrest, Right	
--	--

Power Modules – VR2

QSE110004	Power Module, VR2, 60 A (R-Net Compatible Connectors)	
-----------	---	--

Drive Wheels & Castor Wheels & Mudguards

◀ **BACK**



Kerb Climber

◀ **BACK**



// QOR090130

Armrest Type & Swing Away Legrest

◀ **BACK**



Remote Joystick – VR2

◀ **BACK**



Comments

--

Q100R

€

Base Price	00,000.00
Total Of Additional Equipment	
Packaging And Transport	
Exclusive VAT	
VAT	
Total Price	

Date

Signature

Day Month Year

**Sunrise Medical S.L**

Poligono Bakiola,41

48498 Arrankudiaga

Vizcaya,Spain

Phone: +34 902 142 434

Fax: +34 946 481 575

E-Mail: Monica.garcia@sunrisemedical.es

Patricia.delafuente@sunrisemedical.es

www.SunriseMedical.eu