



AUSTRALIA



≡ JAY Your Way is a modification program designed to individualize and customize JAY products. From clinical improvements to colored covers, JAY Your Way can be used to create cushions and backs manufactured to users' unique individual needs. This catalog includes information on customizing JAY bases, fluid inserts, covers and backrests, and using our simple online ordering process.

JAY foam cushion bases provide a stable medium of support and the foundation for postural stability. Pre-contouring assists in the appropriate distribution of seated pressure to protect the user from skin breakdown. JAY Your Way can be used to properly position users with unique needs to provide a safe and effective sitting position.

Cushion Base Modifications

Size Modifications



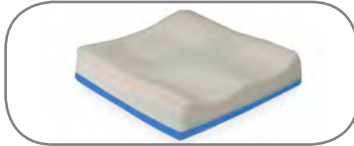
Reducing Size

Mod Detail: Removing foam from the length or width of the cushion base and sewing the cover to fit
Clinical Application: To match the size of the client and/or wheelchair



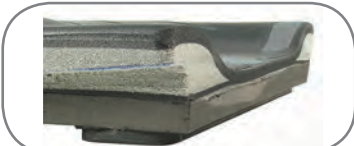
Increasing Size

Mod Detail: Adding dummy foam to the length or width of the cushion base and sewing the cover to fit
Clinical Application: To match the size of the client and/or wheelchair



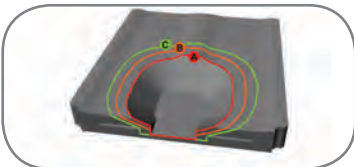
Reduce Cushion Height

Mod Detail: Remove foam from the cushion base to decrease height.
Clinical Application: Accommodate wheelchair fit, environment needs, and/or client needs
Example: Decrease seat-to-floor height for easier transfers and foot propulsion.



Increasing Height

Mod Detail: Adding foam underneath the cushion base to increase height/thickness
Clinical Application: To accommodate wheelchair fitting and/or environment needs e.g transfers or ground clearance



Well Sizing:

Mod Detail: Increasing or decreasing the standard, factory set size of the Pelvic Loading Area (PLA).
Clinical Application: To allow for anatomically optimised loading areas when considering proper immersion, pressure reduction and lateral stability.

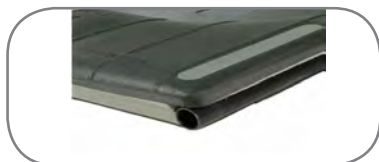


Moving PLA Forward

Mod Detail: Move PLA forward on base
Clinical Application: To allow for fixed posterior pelvic tilt or allow more space for ischial tuberositas to optimise pressure distribution and reduction

Cushion Base Modifications

Base and Positioning Modifications



Notch for Seat Rails

Mod Detail: Removing foam along the bottom, lateral edges of the foam base

Clinical Application: To lower the cushion between seat rails to achieve the lowest possible seat-to-floor height



Notch for Back Posts

Mod Detail: Notching the back corners of the foam base

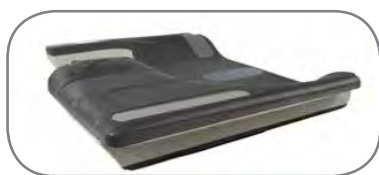
Clinical Application: To slide cushion between back posts when loading surface is posterior to back posts, to lock in cushion in the case of frequent transfers and to build in some depth growth opportunities



Leg Length Cut (Right/Left)

Mod Detail: Decreasing the length of the foam base and fluid pad (if applicable) on the left or right side and sewing the cover to fit

Clinical Application: To accommodate varying femoral lengths



Contracture Cut

Mod Detail: Undercutting the front of the foam base at an angle

Clinical Application: To clear the calves in cases of tight hamstrings, large calves, or close front thigh to lower leg angles, to accommodate chair configurations, and to accommodate foot propulsion



Scrotal Relief

Mod Detail: Scooping out the front and center of the Pelvic Loading Area (PLA)

Clinical Application: To accommodate organ tissue, reduce discomfort, and increase sitting tolerance



Custom Drop Seat

Mod Detail: Fitting a drop seat to the cushion base

Clinical Application: To minimize seat-to-floor height for foot propelling and transfers



Angle Cut Posterior/Anterior Slope

Mod Detail: Removing foam at an angle from underneath the cushion base

Clinical Application: **Anterior Slope:** To accommodate hip flexion limitations and assist with foot propelling and transfers (back of cushion will be higher). **Posterior Slope:** To close seat to back angle, e.g. for postural stability (front of cushion will be higher).



Wedge Glue Posterior/Anterior Slope

Mod Detail: Adding a foam wedge underneath the cushion base

Clinical Application: **Anterior Slope:** To accommodate hip flexion limitations and assist with foot propelling and transfers. **Posterior Slope:** To close seat to back angle (e.g. for postural stability)



Medial Support Cut

Mod Detail: Removing the pre-contoured medial support

Clinical Application: To improve positioning when femoral alignment is not neutral (e.g. in windswept postures) or when transfers are inhibited by the medial thigh support

Cushion Base Modifications

Base and Positioning Modifications, cont'd



Femoral Relief

Mod Detail: Shaving away the front of PLA to transition from PLA to femoral support area
Clinical Application: To reduce pressure at front of PLA area to accommodate tissue and increase sitting tolerance for users with sensation



Leg Trough Cut

Mod Detail: Scooping away 1" of base material from the front of the PLA forward to the front edge of the femoral support area
Clinical Application: To improve medial and lateral positioning and support of the femurs and to accommodate hip limitations by opening hip angles



Trochanteric Relief

Mod Detail: Removing material at the lateral borders of the PLA, beneath the trochanters
Clinical Application: To reduce pressure at or surrounding the trochanters and evenly distribute load across the whole sitting surface

Positioning Components

Positioning pieces, such as adductors, abductors, and hip guides, can be added to several foam cushion bases to improve sitting posture and positioning. The below positioning components are shown on the JAY J3 Cushion base.



Adductors



Abductor



Hip Guides

The JAY Flow™ fluid pad provides pressure and shear reduction for the user who is at risk for skin breakdown. The fluid pad allows immersion with minimal resistance and conforms to the shape of the user's pelvis, providing enhanced pressure distribution. JAY Your Way can be used to create a safe sitting surface from femurs to pelvis.

Fluid Insert Modifications



Underfill

Mod Detail: Reducing factory set fluid volume in the JAY Flow fluid pad

Clinical Application: To increase immersion of the pelvis into the fluid to achieve appropriate skin protection and/or lateral stability when bottoming out is not a concern



Overfill

Mod Detail: Increasing factory set fluid volume in the JAY Flow fluid pad

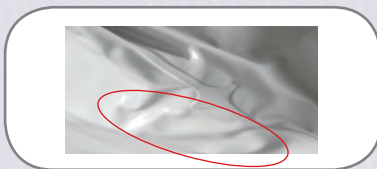
Clinical Application: To redistribute load and reduce pressure on the bony prominences when a client experiences "bottoming out" or discomfort on a standard JAY Flow fluid pad



Accommodating Obliquities

Mod Detail: Applying an overfill to either the right or left side of the JAY Flow fluid pad

Clinical Application: To optimize immersion (underfill), prevent bottoming out (overfill), or substitute for bone or tissue asymmetry (overfill) on one side of the client in the case of a flexible obliquity



Sacral or Scrotal Seal **Mod Detail:** Adding a heat seal in the sacral or scrotal area of the JAY Flow fluid pad

Clinical Application: To control the migration of fluid in order to reduce pressure in areas that are at-risk for skin breakdown, pain, or discomfort

Each JAY cushion and back comes with a carefully designed cover manufactured from top-of-the-line materials that enhance their clinical effectiveness and comfort. JAY Your Way can be used to add some color or better fit users' unique lifestyles.

Cover Modifications



Zippered Inner Cover

Mod Detail: The water-resistant, stretchable Zippered Inner Cover reduces surface tension and protects from dirt, moisture and odor build-up.

Clinical Application: To reduce surface tension, to protect foam base from dirt and moisture build-up, and to prevent odor



Embroidery

Mod Detail: Personalize your JAY cover with embroidery available in single color, Arial font up to 32 characters



Add Front Zipper Pocket

Mod Detail: Zippered pocket is sewn on the front underside of the cushion cover for convenient access and storage for small items such as keys, credit cards, or cell phones

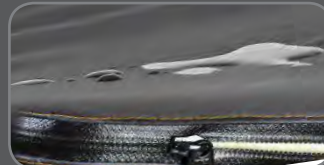
Custom Outer Covers (Fabric Options)



Incontinent Zipper Cover



Incontinent Shower Cap Cover



Dartex® Cover with AquaGuard® Zipper



Reverse Dartex® Cover with AquaGuard Zipper



Microclimatic-3DX



JAY Stretch Zipper Cover



X-static® Cover with Breathable Spacer Fabric

Outer Cushion Cover with Colored Side Bands and Colored JAY Back Cover*



Turquoise cushion cover and University Red back cover



Digital Camo



Electric Lime



Grey



Hunters Orange



Navy Blue



Very Violet



Pink Sorbet



Shocking Pink



Turquoise



University Red



Volt Yellow

JAY backrests offer superior quality, support and comfort. From tension-adjustable straps to contoured solid shells, JAY provides lateral trunk and postural support for users with varying needs. JAY Your Way can be used to build an ideal product for users with unique needs.

Backrest Modifications



Spinal Fluid Pad

Mod Detail: Add a JAY fluid pad over spinal area of foam back

Clinical Application: To reduce pressure along bony area of the spine that is at risk of skin breakdown



Visco Foam Insert

Mod Detail: Add a Visco memory foam insert with a cover sewn to match

Clinical Application: To add a comfort layer over the standard supportive foam for increased sitting tolerance and pressure reduction



Painted Back Shell (colours)*

Aztec Gold	Bead Blast Black	Black Cherry	Black Opal
Blue Opal	Candy Blue	Candy Purple	Candy Red
Electric Blue	Evergreen	Glow	Green Apple
Hot Sparkle Pink	Mauve Pink	Rootbeer	Sparkle Silver
Sunrise Orange	Yellow	Titanium Color Paint	Matte Black
Matte Black Cherry	Matte Purple	Matte Electric Blue	Matte Evergreen
Glossy White			

*Refer to the Quickie® & Zippie® Colour Brochure for more information.

JAY Your Way Cushions Modification Matrix

Cushion Modifications																								
Modifications Offered	MOD Codes	Upcharge Y or N	Catalogue Reference Page	JAY Basic Cushion	JAY Go Cushion	JAY Zip Cushion	JAY Ion Cushion	JAY Union Cushion	JAY LTE Cushion	JAY Soft Combi Cushion	JAY Soft Combi P Cushion	JAY Care Cushion	JAY Duo Cushion	JAY Easy Cushion	JAY X2 Cushion	JAY J2 Cushion	JAY J2 Recline Cushion	JAY J2DC Cushion	JAY J2 Plus Cushion	JAY GS Cushion	JAY Fusion Cushion	JAY J3 FF Fluid Cushion	JAY J3 FV Fluid Cushion	JAY J3 with AIR Cushion

Size Modifications																											
Increase Length 1" - added to front of cushion	IL1	N	2																								
Increase Length 2" - added to front of cushion	IL2	N	2																								
Increase Length 3" - added to front of the cushion	IL3	N	2																								
Increase Length 4" - added to front of the cushion	IL4	N	2																								
Reduce Length 1" - removed from front of cushion	RL1	N	2																								
Reduce Length 2" - removed from front of cushion	RL2	N	2																								
Reduce Length 3" - removed from front of cushion	RL3	N	2																								
Reduce Length 4" - removed from front of cushion	RL4	N	2																								
Increase Width 1" - 1/2" added to each side of cushion	IW1	N	2																								
Increase Width 2" - 1" added to each side of cushion	IW2	N	2																								
Increase Width 3" - 1 1/2" added to each side of cushion	IW3	N	2																								
Increase Width 4" - 2" added to each side of cushion	IW4	N	2																								
Reduce Width 1" - 1/2" removed from each side of cushion	RW1	N	2																								
Reduce Width 2" - 1" removed from each side of cushion	RW2	N	2																								
Increase Height 1" - material added to bottom of cushion	IH1	N	2																								
Increase Height 2" - material added to bottom of cushion	IH2	N	2																								
Increase Height 3" - material added to bottom of cushion	IH3	N	2																								
Increase PLA or Well Sizing 1" - 1/2" increase to each side	IWS1	N	2																								
Increase PLA or Well Sizing 2" - 1" increase to each side	IWS2	N	2																								
Increase PLA or Well Sizing 3" - 1 1/2" increase to each side	IWS3	N	2																								
Increase PLA or Well Sizing 4" - 2" increase to each side	IWS4	N	2																								
Reduce PLA or Well Sizing 1" - 1/2" decrease to each side	RWS1	N	2																								
Reduce PLA or Well Sizing 2" - 1" decrease to each side	RWS2	N	2																								
Reduce PLA or Well Sizing 3" - 1 1/2" decrease to each side	RWS3	N	2																								
Reduce PLA or Well Sizing 4" - 2" decrease to each side	RWS4	N	2																								
Move PLA or Well - 1" Forward	CPLAL1	N	2																								
Move PLA or Well - 2" Forward	CPLAL2	N	2																								
Move PLA or Well - 3" Forward	CPLAL3	N	2																								

Base Modifications																											
Notch for Rails - 1.25" from side, 1.5" from bottom	NR	N	2																								
Notch for Posts - 1.25" from side, 1.5" from back	NP	N	2																								
Leg Length Out Right 1" - 1" removed from front, right of cushion	LLCR1	N	2																								
Leg Length Out Right 2" - 2" removed from front, right of cushion	LLCR2	N	2																								
Leg Length Out Right 3" - 3" removed from front, right of cushion	LLCR3	N	2																								
Leg Length Out Right 4" - 4" removed from front, right of cushion	LLCR4	N	2																								
Leg Length Out Left 1" - 1" removed from front, left of cushion	LLCL1	N	2																								
Leg Length Out Left 2" - 2" removed from front, left of cushion	LLCL2	N	2																								
Leg Length Out Left 3" - 3" removed from front, left of cushion	LLCL3	N	2																								
Leg Length Out Left 4" - 4" removed from front, left of cushion	LLCL4	N	2																								
Contracture Cut (1" x 45°)	OCT	N	2																								
Scrotal Relief Cut	SR	N	2																								
Custom Drop Seat	CDS	Y	3																								
Angle Out Posterior Slope 1/2" - front to back slope	ACP12	N	3																								
Angle Out Posterior Slope 1" - front to back slope	ACP1	N	3																								
Angle Out Posterior Slope 1 1/2" - front to back slope	ACP112	N	3																								
Angle Out Anterior Slope 1/2" - back to front	ACA12	N	3																								
Angle Out Anterior Slope 1" - back to front	ACA1	N	3																								
Angle Out Anterior Slope 1 1/2" - back to front	ACA112	N	3																								
Wedge Glue Posterior Slope	WGP	N	3																								

Cushion Modifications

Modifications Offered	MOD Codes	Upcharge Y or N	Catalogue Reference Page	JAY Basic Cushion	JAY Go Cushion	JAY Zip Cushion	JAY Ion Cushion	JAY Union Cushion	JAY LITE Cushion	JAY Soft Combi Cushion	JAY Soft Combi P Cushion	JAY Care Cushion	JAY Duo Cushion	JAY Easy Cushion	JAY X2 Cushion	JAY J2 Cushion	JAY J2 Recline Cushion	JAY J2DC Cushion	JAY J2 Plus Cushion	JAY GSO Cushion	JAY Fusion Cushion	JAY J3 FF Fluid Cushion	JAY J3 FV Fluid Cushion	JAY J3 with AIR Cushion
-----------------------	-----------	-----------------	--------------------------	-------------------	----------------	-----------------	-----------------	-------------------	------------------	------------------------	--------------------------	------------------	-----------------	------------------	----------------	----------------	------------------------	------------------	---------------------	-----------------	--------------------	-------------------------	-------------------------	-------------------------

Wedge Glue Anterior Slope	WGA	N	3
Medial Support Cut	MSC	N	3
Femoral Relief Cut	FR	N	3
Leg Trough Cut 1" Deep - Right	LTC1R	N	3
Leg Trough Cut 1" Deep - Left	LTC1L	N	3
Trochanteric Relief Cut	TR	N	3
Lateral Thigh 1" Positioning Pieces - Pair	LT1P	Y	3
Lateral Thigh 1" Positioning Pieces - Right only	LT1R	Y	3
Lateral Thigh 1" Positioning Pieces - Left only	LT1L	Y	3
Lateral Thigh 2" Positioning Pieces - Pair	LT2P	Y	3
Lateral Thigh 2" Positioning Pieces - Right only	LT2R	Y	3
Lateral Thigh 2" Positioning Pieces - Left only	LT2L	Y	3
Medial Thigh 1" Positioning Piece	MT1	Y	3
Medial Thigh 2" Positioning Piece	MT2	Y	3
Lateral Pelvic 1" Positioning Pieces - Pair	LP1P	Y	3
Lateral Pelvic 1" Positioning Pieces - Right only	LP1R	Y	3
Lateral Pelvic 1" Positioning Pieces - Left only	LP1L	Y	3
Lateral Pelvic 2" Positioning Pieces - Pair	LP2P	Y	3
Lateral Pelvic 2" Positioning Pieces - Right only	LP2R	Y	3
Lateral Pelvic 2" Positioning Pieces - Left only	LP2L	Y	3
DO NOT Install Positioning Pieces - pieces ship separately	DNIP	N	3
Visco Foam Overlay	VFO		3

Gray box indicates that the modification is not available on the product.

Please consult the JAY Price List for upcharges.

JAY Your Way Cushions Modification Matrix (Continued)

Cushion Modifications Continued

Modifications Offered	Additional Detail	MOD Codes	Upcharge Y or N	JAY Basic Cushion	JAY Basic Pro® Cushion	JAY GO Cushion	JAY Zip® Cushion	JAY Ion® Cushion	JAY Union® Cushion	JAY LITE Cushion	JAY Soft Combi P Cushion	JAY Care Cushion	JAY Duo® Cushion	JAY Easy® Cushion	JAY X2® Cushion	JAY J2®/J2 Recline Cushion	JAY J2® DC Cushion	JAY J2® Plus Cushion	JAY GS® Cushion	JAY Fusion® Series Cushion	JAY J3® Cushion
				Fluid Insert Modifications																	
Underfill	Up to 20% (in 5% increments)	UF	N																		
Overfill	Up to 40% (in 5% increments)	OF	N																		
Obliquity Underfill	Left or Right Side, up to 20%	OUF	N																		
Obliquity Overfill	Left or Right Side, up to 40%	OOF	N																		
Sacral Seal		SAS	N																		
Scrotal Seal		SCS	N																		
Cover Modifications																					
Zipped Inner Cover	Reverse Dartex® with Aquaguard Zipper	ZIC	Y																		
Custom Outer Cover	Incontinent Showercap Cover (J2 Style)	JISC	N																		
	Incontinent Zipper Cover	JIOC	Y																		
	JAY Stretch Zipper Cover (Fusion Style)	JSOC	Y																		
	X-static® Cover with Breathable SPacer Fabric	JBOC	Y																		
	3DX® Cover with Zipper	J3DX	Y																		
	Dartex® Cover with Aquaguard® Zipper	JRDOC	Y																		
	Reverse Dartex® Cover with Aquaguard® Zipper	JRDOC	Y																		
Embroidery	Arial Font up to 32 Characters - Single Colour	EMBROIDERY	Y																		
Coloured Outer Cover Sidebands	Digital Camo	COCSDC	N																		
	Electric Lime	COCESEL	N																		
	Grey	COCSG	N																		
	Hunters Orange	COCSHO	N																		
	Navy Blue	COCSNB	N																		
	Pink Sorbet	COCSPS	N																		
	Shocking Pink	COCSSP	N																		
	Turquoise	COCSST	N																		
	University Red	COCSURD	N																		
	very Violet	COCSVV	N																		
	Volt Yellow	COCSVY	N																		
Add Front Zipper Pocket		FZP	Y																		

Note: Some limitations and restrictions apply. Please contact customer service for more information

- Bullet indicates that the modification is available on the product
- Gray box indicates that the modification is not available on the product
- Green box indicates upcharge on modification

Arm Trough and Foot Box Modifications



Add Pommel to Hand Pad

Mod Detail: Add ergonomic pommel mount to hand portion of arm trough. Available for arm troughs only.

Clinical Application: To improve comfort and pressure distribution for improved sitting tolerance



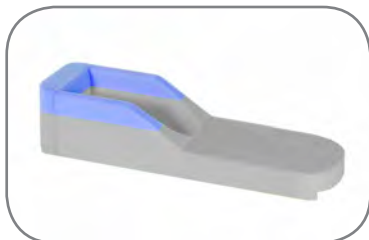
Visco Overlay

Mod Detail: Add a top layer of Visco memory foam for additional comfort



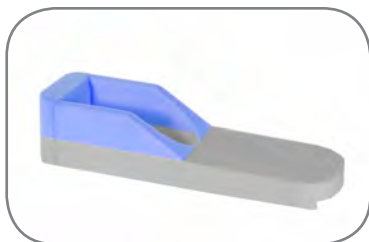
Add Additional Strap

Mod Detail: Add additional strap to secure the extremity



Reduce Height of Arm Troughs Side Wall

Mod Detail: Lower the height of one or both of the side walls. Available for arm troughs only.



Remove Side Walls of Arm Trough

Mod Detail: Remove the side walls for larger extremities. Available for arm troughs only.



Contact Surface

Fabrics: Naugahyde, Sheep Skin, and Microclimactic-3DX



Colored Sidebands

Fabric Colors: See page 7 for color reference

JAY Your Way Arm Trough & Foot Box Modification Matrix

Arm Trough and Foot Boxes (See page 11)			
Modifications Offered	Additional Detail	Upcharge Y or N	
		Arm Troughs	Foot Boxes
Add Pommel to Hand Pad		N	-
Visco Overlay		Y	-
Add Additional Strap		Y	-
Reduce Height of Side Wall	1/2"	Y	-
	1"	N	-
Remove Side Walls		N	-
Coloured Side Bands	Digital Camo	-	-
	Electric Lime	Y	-
	Grey	Y	-
	Hunters Orange	Y	-
	Navy Blue	Y	-
	Pink Sorbet	Y	-
	Shocking Pink	Y	-
	Turquoise	Y	-
	University Red	Y	-
	Very Violet	Y	-
Reduce Width	1"	N	-
	1/2"	N	-
Increase Leg Trough Size	1"	N	-
	1/2"	N	-
Reduce Leg Trough Size	1/2"	N	-
	1"	N	-

JAY Your Way Backs Modification

Back Modifications													
Modifications Offered	Additional Detail	MOD Codes	Upcharge Y or N	JAY Focus / Tall Back	JAY Basic Back	JAY J2® Back	JAY J2® DC Back	JAY J2® Plus Back	JAY 60 Back	JAY J3® Back	JAY Zip® Back	JAY J3® HV Back	JAY J3® CF Back
Spinal Fluid Pad		SFPXT	Y	-	-	-	-	-	-	-	-	-	-
Visco Foam Insert		VF	Y	-	-	-	-	-	-	-	-	-	-
Scapular Relief Cut		SR	N	-	-	-	-	-	-	-	-	-	-
Upside Down Back Shell w/ Head Rest		TBSH	N	-	-	-	-	-	-	-	-	-	-
Upside Down Back Cover		USDC	N	-	-	-	-	-	-	-	-	-	-
Zipper at the Top of the Cover													
Custom Outer Cover	Sealed Inner Cover	ZIC	Y	-	-	-	-	-	-	-	-	-	-
	Incontinent Zipper Outer Cover	JIOC	Y	-	-	-	-	-	-	-	-	-	-
	X-static® Cover with Zipper	JBOC	Y	-	-	-	-	-	-	-	-	-	-
	3DX® Cover with Zipper	J3DX	Y	-	-	-	-	-	-	-	-	-	-
	Reverse Dartex® Cover with Aquaguard® Zipper	JRDOC	Y	-	-	-	-	-	-	-	-	-	-
Embroidery	Arial Font up to 32 Characters - Single Colour	EMBROIDERY	Y	-	-	-	-	-	-	-	-	-	-
	Custom Artwork from Digital File	EMBDIG	Y	-	-	-	-	-	-	-	-	-	-
Coloured Outer Cover w/ Zipper	Digital Camo		N	-	-	-	-	-	-	-	-	-	-
	Electric Lime		N	-	-	-	-	-	-	-	-	-	-
	Grey		N	-	-	-	-	-	-	-	-	-	-
	Hunters Orange		N	-	-	-	-	-	-	-	-	-	-
	Navy Blue		N	-	-	-	-	-	-	-	-	-	-
	Pink Sorbet		N	-	-	-	-	-	-	-	-	-	-
	Shocking Pink		N	-	-	-	-	-	-	-	-	-	-
	Turquoise		N	-	-	-	-	-	-	-	-	-	-
	University Red		N	-	-	-	-	-	-	-	-	-	-
	Very Violet		N	-	-	-	-	-	-	-	-	-	-
Painted Backshell	All Quickie and Zippie Colours Available	CBS	N	-	-	-	-	-	-	-	-	-	-