

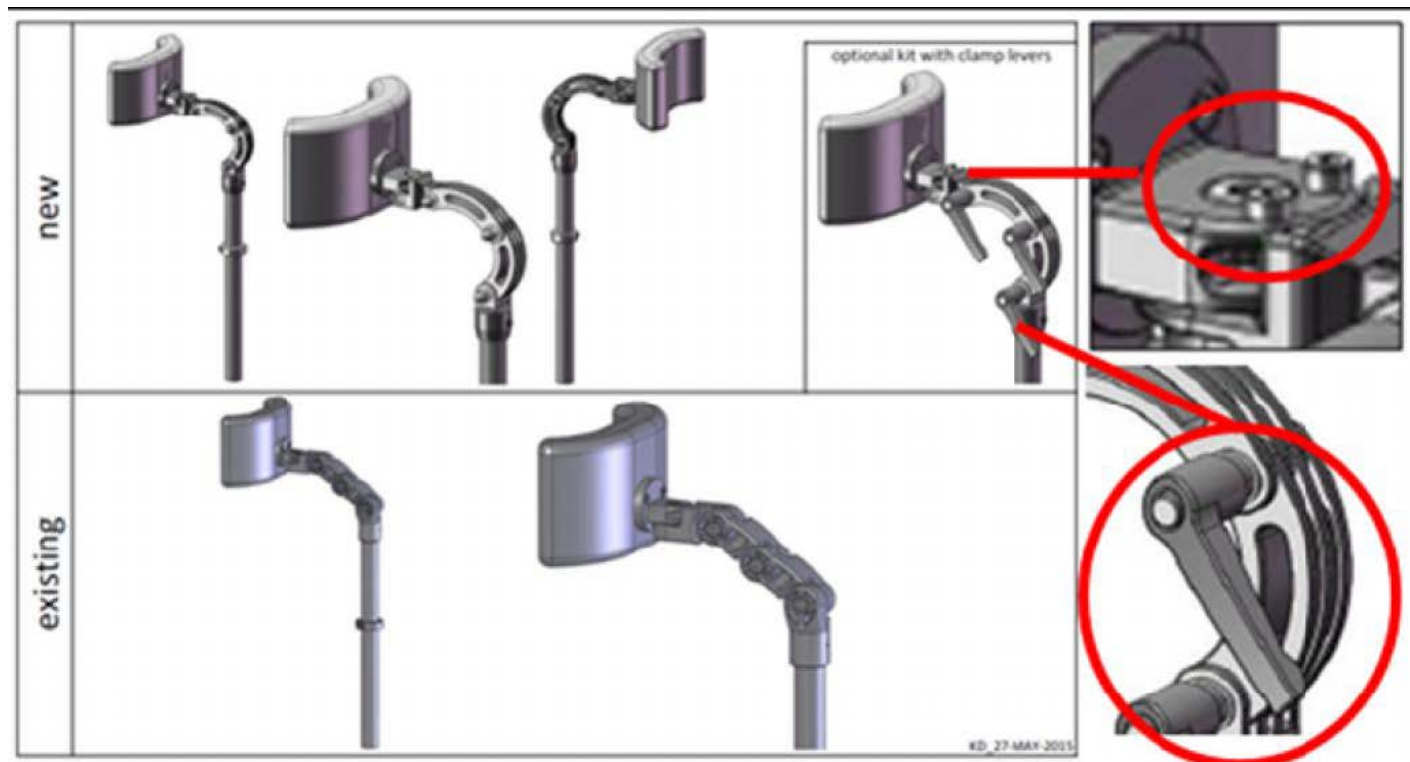
BULLETIN DETAILS

Product Group:	Power
Model Effected:	Jive and Salsa Family powerchair updates
Effective Date: Refer to options below	Serial No. Effective From: N/A
Bulletin Subject:	Various Jive and Salsa Updates

Description of Issue / Solution: Various updates on Power chair:

New headrest mounts for all Salsa's and Jives (05-10-2015):

Form the 5th October 2015, all Salsa and Jive family powerchairs will be fitted with new headrest mounts. This includes the introduction of new mounting clamps for the use of specialist head controls.



The advantages of the new headrest mount system are:

- More stability
- Easier headrest positioning
- Increased fixing strength
- Increase in torsion resistance

Jive M and Jive Up (with immediate effect):

A chair tie down bracket is now attached to all Jive M bases at the front. This leads to a much simpler way to tie down the Jive M base in a vehicle and the user still has the ability to tilt the seat whilst tied down.



Jive Up reclining armrest (with immediate effect):

With immediate effect we now have the reclining armrest also available for the seat depth settings 48, 50 and 52cm (originally only available up to 46cm). Additionally the linkage tube has been updated as per picture below.



Strengthened square recline armrest linkage tube with a supportive roller for the Jive Up.

Jive Up backrest actuator fixation (with immediate effect):

We have changed the upper actuator fixing point on the backrest on Jive Up from a channel nut principal to a standard bolt through the backrest extrusion structure. This provides a more solid connection between the actuator and the back structure.



6mm bolt that goes through the Jive Up backrest extrusion structure for increased strength.

Literature affected:

- Parts Manual Updated
- Order Form N/A
- Brochure N/A
- Owners Manual To be updated for Tie Down information

If you have any questions regarding this bulletin, please do not hesitate to contact:

Customer Services	Customer Support	Technical Service Centre	E-mail
Telephone:	+44 (0)845 605 66 88 Option 2	+44 (0)845 605 66 88 Option 3	enquiries@sunmed.co.uk
Fax:	+44 (0)845 605 66 89	+44 (0)845 605 66 89	help.technical@sunmed.co.uk