

Invoice to:
 Name:
 Street:
 Town: Postal code:
 E-Mail:
 Tel: Fax:

Deliver to:
 Name:
 Street:
 Town: Postal code:
 E-Mail:
 Tel: Fax:

Order date:
 Purchase order:

Marked for:

Base Pricing
£3,400

Fax number: +44 (0)845 605 66 89
 Email: orders@sunmed.co.uk

Crash tested & Passed
 Max. user weight: 125kg



CLIENT MEASUREMENT

SEAT WIDTH SELECTION - measured from outside frame tube to outside frame tube

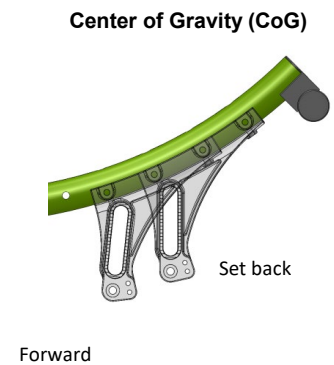
<input type="radio"/>	Base with tilt Size 1 (seat width 30cm; seat depth adjustable from 37,5 - 45 cm)	ZRS010104
<input type="radio"/>	Base with tilt Size 2 (seat width 35cm; seat depth adjustable from 37,5 - 45 cm)	ZRS010105
<input type="radio"/>	Base with tilt Size 3 (seat width 40cm; seat depth adjustable from 37,5 - 45 cm)	ZRS010106

SEAT DEPTH SELECTION - only factory setting selection; all seat depths are adjustable from 37,5 - 45 cm

<input type="radio"/>	37,5 cm	SD375
<input type="radio"/>	40,0 cm	SD40
<input type="radio"/>	42,5 cm	SD425
<input type="radio"/>	45,0 cm	SD45

SEAT HEIGHT SELECTION - in dependence of front castor, rear wheel and center of gravity

Front Castor	Rear Wheel	Center of Gravity	Seat Height in cm												
			43	44	45	46	47	48	49	50	51	52			
6"	16"	Forward	<input type="radio"/>	<input type="radio"/>	<input type="radio"/>	<input type="radio"/>	<input type="radio"/>	<input type="radio"/>	<input type="radio"/>						
	22"									<input type="radio"/>					
	24"														
6"	16"	Set back	<input type="radio"/>	<input type="radio"/>	<input type="radio"/>	<input type="radio"/>	<input type="radio"/>								
	22"						<input type="radio"/>	<input type="radio"/>	<input type="radio"/>						
	24"														
7"	16"	Forward					<input type="radio"/>	<input type="radio"/>							
	22"									<input type="radio"/>	<input type="radio"/>				
	24"														
7"	16"	Set back				<input type="radio"/>	<input type="radio"/>								
	22"						<input type="radio"/>	<input type="radio"/>	<input type="radio"/>	<input type="radio"/>					
	24"										<input type="radio"/>				
8"	16"	Forward						<input type="radio"/>	<input type="radio"/>						
	22"									<input type="radio"/>	<input type="radio"/>	<input type="radio"/>			
	24"											<input type="radio"/>	<input type="radio"/>		
8"	16"	Set back							<input type="radio"/>	<input type="radio"/>	<input type="radio"/>	<input type="radio"/>	<input type="radio"/>		
	22"									<input type="radio"/>	<input type="radio"/>	<input type="radio"/>	<input type="radio"/>		
	24"											<input type="radio"/>	<input type="radio"/>		



● = Standard ○ = No cost option

SEAT			
ZRS020109	●	Seat plate	
ZRS020151	□	Trapezoid adapter complete, aluminium (L: 30cm; W (front): 28cm; W (back): 14cm)	£485
ZRS090018	○	Positioning belt	
JAY Cushions - for complete product range see Jay order forms:			
JAY020002	□	JAY Basic	£75
JAY020001	□	JAY Easy Visco	£180
CASTOR TYRES			
ZRS080301	○	Solid	
ZRS080302	○	Soft solid	(only 6")
ZRS080305	○	Pneumatic	
REAR WHEEL TYRES			
ZRS070102	○	Solid	
ZRS070101	○	Right Run	(pneumatic) (only 22"/24")
ZRS070104	□	Marathon plus evolution	(pneumatic) (only 24") £105
HANDRIMS			
ZRS070202	○	Aluminium silver anodized	(only 22"/24")
ZRS070201	○	Aluminium clear powdercoated	(only 22"/24")
ZRS070203	□	Aluminium colour powdercoated	(only 22"/24") £90
ZRS070208	□	Maxgrepp	(only 22"/24") £195
ZRS070317	○	Handrim mounting close 17mm	(not with 16" rear wheel)
WHEEL LOCKS			
ZRS070008	●	Drumbrake wheel	
ZRS060008	□	Kneelever wheel lock with extension tubes	(in addition to drum brake, only 22"/24") £70
SPOKE GUARDS (only 22" / 24")			
ZRS070831	○	Transparent	ZRS070813 ○ Galactica ZRS070828 ○ Space
ZRS070823	○	Princess	ZRS070821 ○ Pirates
ZRS070816	○	Happy Lions	ZRS070814 ○ Graffiti
ZRS070819	○	Monkeys	ZRS070802 ○ Basketball
ZRS070820	○	Oriental	ZRS070812 ○ Flying Water
ZRS070829	○	Superhero	ZRS070833 ○ Zebra
ZRS070817	○	Hot Wheels	ZRS070818 ○ Jungle Fever
ZRS070822	○	Pool	ZRS070811 ○ Feather
ZRS070827	○	Silk	ZRS070806 ○ Chrome Wheel
ZRS070830	○	Tiger	ZRS070803 ○ Basketball 2
SIDEGUARDS			
ZRS040000	○	Omit sideguard	
ZRS040109	□	Fender sideguard	(not in combination with single post sideguard; square welded receiver or 16" wheels) £330
ZRS040052	□	Single post tool height & depth adjustable (33 cm)	(not in combination with fender sideguard; square welded receiver; SD 37.5cm) £210
Square welded receiver for third party armrest (15 x 15 mm; black)			
ZRS040124	□	mounted	ZRS040125 □ not mounted £75
Push bar, angle- and height adjustable			
ZRS030206	●	Push bar, angle- and height adjustable	

● = Standard ○ = No cost option □ = Cost option

£

BACKRESTS				
ZRS030012	○	Angle adjustable back	(90° - 120°; SD45 only 90°-110°)	
ZRS030526	○	90°	ZRS030527 ○ 95° ZRS030528 ○ 100°	
ZRS030529	○	105°	ZRS030531 ○ 110° ZRS030532 ○ 115° ZRS030533 ○ 120°	
ZRS030014	□	Reclining back	(90° - 120°; changeable also to 85° - 115°)	£500
ZRS030105	□	Backrest fixation, sliding	(not in combination with Jay J3 back & back panel)	£285
ZRS030305	□	Back panel	(not in combination with Jay J3 backs)	£255
ZRS030418	□	Headrest	(incl. receiver; not mounted; not in combination with Jay J3 backs)	£285
ZRS030420	□	Square welded receiver for third party headrest	(15 x 15 mm; black; not mounted)	£70
JAY J3 BACKS plus ACCESSORIES - for complete product range see Jay order forms				
Jay J3 Back - Deep Contour (DC)				
Upper Thoracic (UT):	□	JAY030021 Medium - 46 cm (1)		£870
Jay J3 Back - Posterior Deep Contour (PDC)				
Upper Thoracic (UT):	□	JAY030031 Medium - 46 cm		£870
Shoulder Height (SH):	□	JAY030032 Short - 53 cm (2)		£870
Jay J3 Back Headrests				
JAY030004	□	Jay flip back headrest (J3EUHDFH & J3EUHDLSP)	(only with Jay J3 backs)	£345
JAY030006	□	Jay standard headrest (J3EUHDXH & J3EUHDLSP)	(only with Jay J3 backs)	£180
LEGRESTS & FOOTPLATES				
ZRS050000	○	w/o legrest		
Aluminium hanger 80°				
ZRS050006	□	Left ZRS050007 □ Right	(incl. 7 cm abduction)	£140
ZRS050008	□	Pair	(7 cm abduction each side)	£280
Elevating legrest				
ZRS050009	□	Left ZRS050010 □ Right	(other side aluminium hanger; incl. 7 cm abduction)	£160
ZRS050011	□	Pair	(7 cm abduction each side)	£315
Footplates				
ZRS050020	○	Composite divided (black)	(angle adjustable)	
ZRS050022	□	Aluminium divided (frame colour)	(angle- & depth adjustable)	£105
ZRS050045	□	Platform footrest, knee angle adj. & footplate angle adj., aluminium; flip up with heel stop (frame colour; square welded tube black 15 x 15mm)		£315
Square welded receiver for third party footrest				
ZRS050046	□	mounted	(only in combination with seat plate)	
ZRS050047	□	not mounted		£75
ACCESSORIES				
ZRS090000	●	Tool Kit		
Tip assist (step tube)				
ZRS090001	□	Left ZRS090002 □ Right		£55
ZRS090003	□	Pair	(not in combination with anti-tip tubes)	£115
Anti-tip tube, flip up				
ZRS090042	□	Left ZRS090043 □ Right		£115
ZRS090044	□	Pair	(not in combination with tip assist)	£230
ZRS090070	□	Accessory box	(only in combination with anti-tip tube; max. load 13 kg)	£650
ZRS090011	□	Tray slide on	(only SW 40, only in combination with single post sideguard)	£555

(1) Only SW 35 & 40 cm

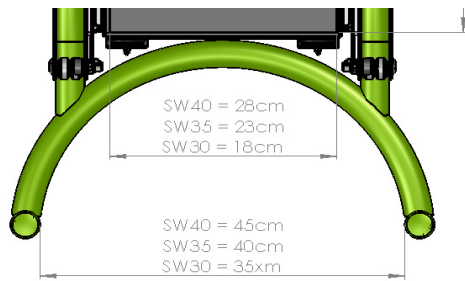
(2) Only SW 40 cm

COLOURS			
Frame Colour		Handrim Colour	£
ZRS100102	<input type="radio"/> 02	Brilliant Silver	ZRS100202 <input type="checkbox"/> 02 Brilliant Silver £90
ZRS100103	<input type="radio"/> 03	Silver matt	ZRS100203 <input type="checkbox"/> 03 Silver matt £90
ZRS100104	<input type="radio"/> 04	Silvermetallic	ZRS100204 <input type="checkbox"/> 04 Silvermetallic £90
ZRS100105	<input type="radio"/> 06	Sun Yellow	ZRS100205 <input type="checkbox"/> 06 Sun Yellow £90
ZRS100110	<input type="radio"/> 14	Blue	ZRS100210 <input type="checkbox"/> 14 Blue £90
ZRS100111	<input type="radio"/> 15	Brilliant Marine	ZRS100211 <input type="checkbox"/> 15 Brilliant Marine £90
ZRS100112	<input type="radio"/> 16	Matt Marine	ZRS100212 <input type="checkbox"/> 16 Matt Marine £90
ZRS100113	<input type="radio"/> 19	Brilliant Purple	ZRS100213 <input type="checkbox"/> 19 Brilliant Purple £90
ZRS100115	<input type="radio"/> 21	Red Ruby	ZRS100215 <input type="checkbox"/> 21 Red Ruby £90
ZRS100116	<input type="radio"/> 22	Brilliant Red	ZRS100216 <input type="checkbox"/> 22 Brilliant Red £90
ZRS100117	<input type="radio"/> 23	Matt Red	ZRS100217 <input type="checkbox"/> 23 Matt Red £90
ZRS100118	<input type="radio"/> 24	Tutti Frutti Orange	ZRS100218 <input type="checkbox"/> 24 Tutti Frutti Orange £90
ZRS100120	<input type="radio"/> 27	Graphite Metallic	ZRS100220 <input type="checkbox"/> 27 Graphite Metallic £90
ZRS100122	<input type="radio"/> 29	Black	ZRS100222 <input type="checkbox"/> 29 Black £90
ZRS100123	<input type="radio"/> 31	Matt black	ZRS100223 <input type="checkbox"/> 31 Matt black £90
ZRS100124	<input type="radio"/> 32	Signal white	ZRS100224 <input type="checkbox"/> 32 Signal white £90
ZRS100125	<input type="radio"/> 33	Pink	ZRS100225 <input type="checkbox"/> 33 Pink £90
ZRS100126	<input type="radio"/> 34	Dark chocolate metallic	ZRS100226 <input type="checkbox"/> 34 Dark chocolate metallic £90
ZRS100127	<input type="radio"/> 35	Skyblue	ZRS100227 <input type="checkbox"/> 35 Skyblue £90
ZRS100128	<input type="radio"/> 36	Cyan-Metallic	ZRS100228 <input type="checkbox"/> 36 Cyan-Metallic £90
ZRS100129	<input type="radio"/> 37	Mars Red (Orange)	ZRS100229 <input type="checkbox"/> 37 Mars red £90
ZRS100132	<input type="radio"/> 40	Kiwi	ZRS100232 <input type="checkbox"/> 40 Kiwi £90
ZRS100133	<input type="radio"/> 41	Flamingo-Glitter	ZRS100233 <input type="checkbox"/> 41 Flamingo-Glitter £90
ZRS100134	<input type="radio"/> 42	Matt-Anthracite	ZRS100234 <input type="checkbox"/> 42 Matt-Anthracite £90
ZRS100145	<input type="radio"/> 46	Mamba Green	ZRS100236 <input type="checkbox"/> 46 Mamba Green £90

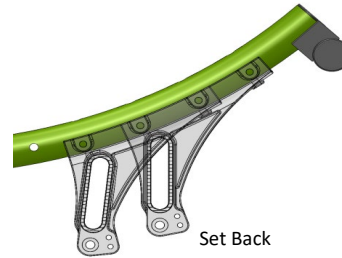
Comments for special build:



Zippie RS - Base Price	£3,400
Option price	£
Exclusive VAT	£
VAT.	£
Total Price	£



Chair dimensions



Set Forward

Set Back

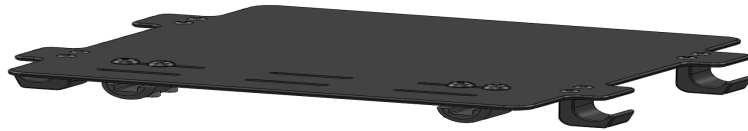
Set Forward

- easy to push & to tip
- short wheelbase

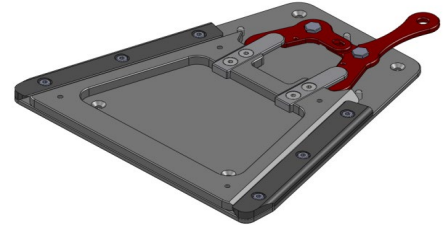
Set Back

- tip resistant
- longer wheelbase

Chair characteristic



Base plate



Trapezoid adapter complete



Right Run



Marathon Plus



Solid



Aluminium silver anodized



Coloured Aluminium pushrim



Maxgrepp

Technical Data Overview:

Max. overall height: 80 - 145 cm
Max. overall length: 90 - 145 cm
Max. overall width: 53 - 63 cm

Max. turning circle: 750 mm
Max. safe slope: 10°
Chair weight: from 18 kg
Dismantled weight: 14 - 22 kg
Weight of heaviest part: 2,1 kg

Product is **crash tested according to ISO 7176-19** and therefore approved for transportation in a vehicle
 For transport without a user the chair must be safe clamped in the vehicle

All changes in the configuration might change the seat heights.
 Manufacturing tolerances of +/- 1 cm



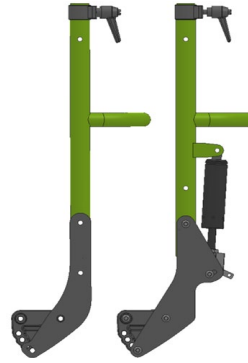
Fender sideguard



Push Bar angle adjustable



Backrest fixation, sliding

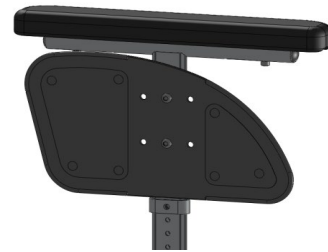


Angle adj. Back

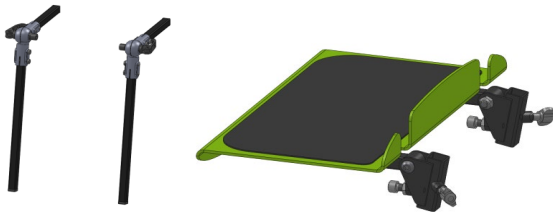
Reclining back



Headrest



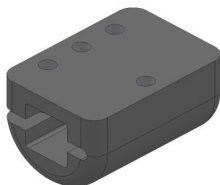
Single post tool height & depth adjustable (33cm)



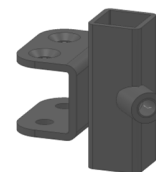
Platform footrest, adjustable foot angle, flip up with heel stop



Divided footplates, aluminium (frame colour)



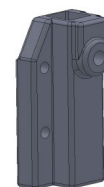
Square welded receiver for own footrest



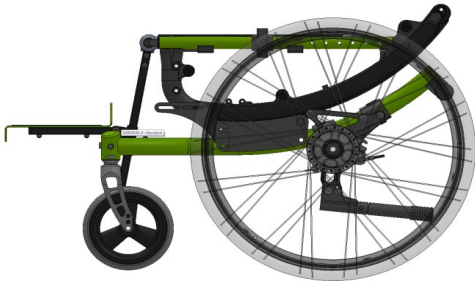
Square welded receiver for own sideguard



Elevating legrest



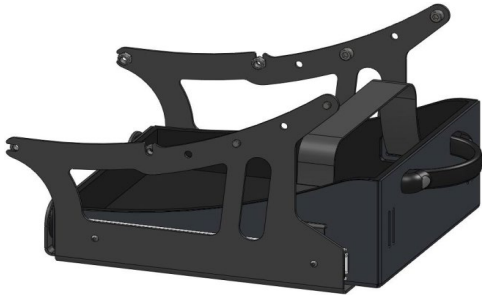
Square welded receiver for own headrest



Tip assist (step tube)



Anti tip tube, flip up



Accessory box

Dimensions of accessory box

