



# Technical / News Bulletin

UK

BULLETIN NO.:

TBUK046

DATE ISSUED

21/11/2014

## BULLETIN DETAILS

**Product Group:** JAY Seating

**Model Affected:** JAY LITE cushion

**Effective Date:** Immediate effect      **Serial No. Effective From:** N/A

**Bulletin Subject:** Introduction of new improved JAY LITE cushion

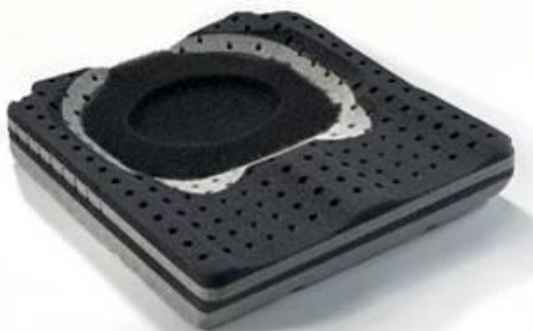
### Subject of Bulletin:

In an ongoing effort to improve the design, functionality and performance of our JAY wheelchair cushions, the ultra lightweight **JAY LITE** cushion has undergone a series of design improvements based on user feedback. The improvements will be implemented as a running change from 29<sup>th</sup> September 2014 onwards.

### New Features:

- New wider Pelvic Loading Area (PLA or seat well)
- New lightweight removable foam inserts
- Corner cuts on base (chamfered edges running front to back)
- New softer foam top layer

Old JAY LITE



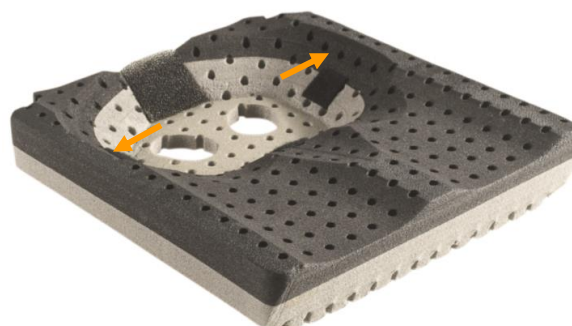
New JAY LITE



### Design Changes & Benefits to Customer

#### 1. New Wider PLA

The PLA has been widened to prevent overloading and discomfort underneath the trochanters (hip bones). This feature has greatly increased the comfort for the user without compromising the pelvic stability and pressure relief provided through the Optiwell™ technology which redirects pressure from underneath the ischial tuberosities (seat bones) to the hips and thighs.



## 2. New Lightweight Removable Foam Insert

The cushion has a new lightweight reticulated foam insert which is securely positioned onto the base foam by velcro. The lightweight insert (only 95g) is removable and contained in a microclimatic cover to offer maximum air flow underneath the buttocks where the most humidity develops. It is removable and machine washable making it easy to maintain.

**New reticulated foam insert  
(supplied as standard insert)**

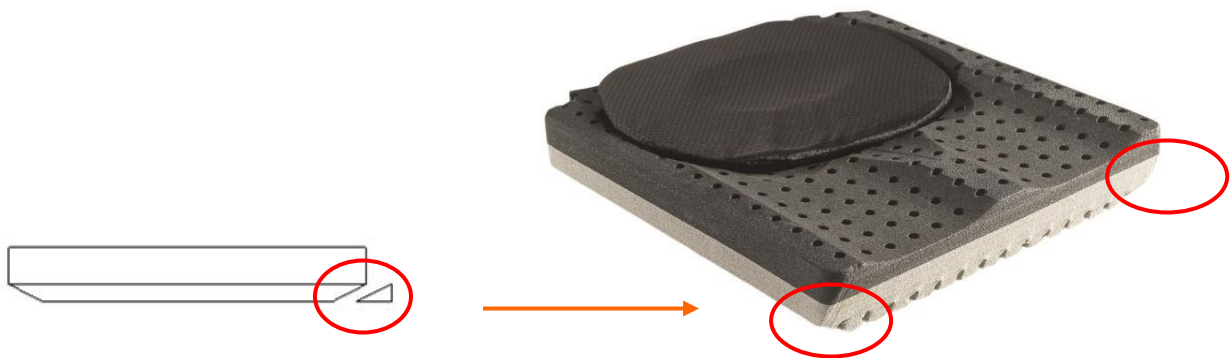
**Polyurethane foam insert  
(available as a spare part)**



- New polyurethane foam insert with incontinent cover is less breathable than the standard insert but slightly softer, more durable and protects the inner foam for users who need it. It is available as a spare part and easily retrofittable.

## 3. Corner Cuts (Chamfered edges) to Base Foam

The base foam now features bevelled or chamfered side edges. This feature reduces the load on the greater trochanters by reducing the bend on the base foam when sat on sling upholstery and also reduces the overall cushion height when fitted into the wheelchair.



#### 4. New Softer Foam Top Layer

The order of the foam layers in the base has been changed so that the softer darker foam is on top and the firmer rigid foam (light grey colour) is at the bottom. This change further enhances comfort for the active user but also increases both postural stability to aid efficient propulsion and cushion durability during prolonged use and transfers.

#### Ordering the JAY LITE cushion

The order codes and process remain unchanged.

If you require any assistance, please contact Matthew Eveleigh, JAY Clinical Specialist, who can assist you at [matthew.eveleigh@sunmed.co.uk](mailto:matthew.eveleigh@sunmed.co.uk).

#### Literature Affected:

<b>Sunparts:</b>	Updated to include the new parts
<b>Order Forms:</b>	Retail available on website and NHS available from Customer Services
<b>Website:</b>	New product listed on website

If you have any questions regarding this bulletin, please do not hesitate to contact:

Customer Services	Customer Support	Technical Service Centre	E-mail
<b>Telephone:</b>	<b>+44 (0)845 605 66 88</b> Option 2	<b>+44 (0)845 605 66 88</b> Option 3	<a href="mailto:enquiries@sunmed.co.uk">enquiries@sunmed.co.uk</a>
<b>Fax:</b>	<b>+44 (0)845 605 66 89</b>	<b>+44 (0)845 605 66 89</b>	<a href="mailto:help.technical@sunmed.co.uk">help.technical@sunmed.co.uk</a>