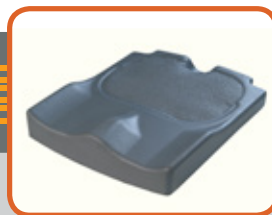


# JAY<sup>®</sup> Easy Visco

| SIMPLY · EFFECTIVE · SEATING |



Incontinence cover



Contoured foam base



Applewood solid seat (option)

## High level comfort and stability

### Clinical Application:

- Client with mild symmetrical or mild asymmetrical posture and moderate postural support requirements
- Moderate risk of skin breakdown
- Client requires comfortable, no maintenance cushion

### Features:

- Exceptionally light and comfortable
- Sacral notch and Back cane cuts
- Incontinence cover
- Choice of flat or bevelled bases for solid or sling seats
- Optional solid seats
- Visco foam filled well

### Clinical Performance

| Factors            | Product Assessment   |
|--------------------|--|
| Skin Protection    | 2 cm ischial immersion into memory foam                                      |
| Shear Prevention   | Ischial immersion and increased contouring to limit sliding                  |
| Stability Provided | Thigh and trochanter support provides lateral and posterior pelvic stability |
| Positioning        | Stable foam base for moderate positioning                                    |
| Comfort            | Exceptional softness, firmness and shape enabling prolonged periods seated   |
| Clinical Benefit   | High comfort and stability   |

Order Part No: JEV Width, Depth, and Flat or Curved ie. JEV2525

| Specifications                     |  |
|------------------------------------|--|
| Positioning                        | High level comfort and stability                           |
| Purpose                            | Lightweight cushions with high level comfort and stability |
| Skin Integrity (Max score is 5)    | 3  |
| Shear (Max score is 5)             | 2  |
| Stability (Max score is 5)         | 4  |
| Positioning (Max score is 5)       | 3  |
| Seating Tolerance (Max score is 5) | 4  |
| User Weight                        | 113kg  |
| Product Weight (MIN)               | 0.50 kg  |
| Product Weight (MAX)               | 2.70 kg  |
| Cushion Type                       | Open Cell Foam   |
| Cover Type                         | Incontinence, Air Exchange / Microclimatic                 |
| Width and Depth                    | 25 - 60 cm   |
| Height Front and Rear              | 6 cm   |
| Guarantee and usage                | 2 years  |

